

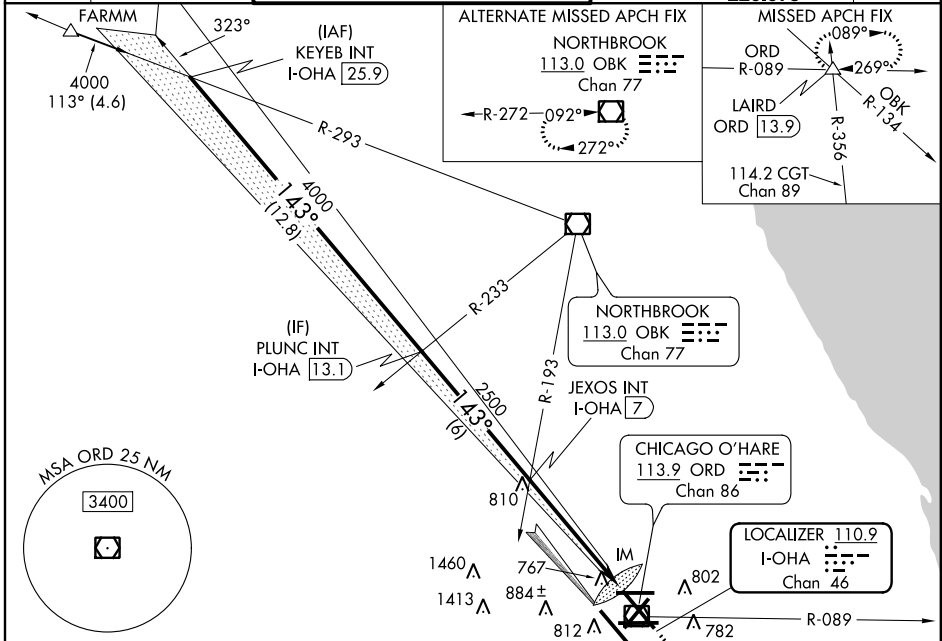
LOC/DME I-OHA	APP CRS	Rwy Idg	8007
110.9	143°	TDZE	653
Chan 46		Apt Elev	672

ILS RWY 14L (CAT II)

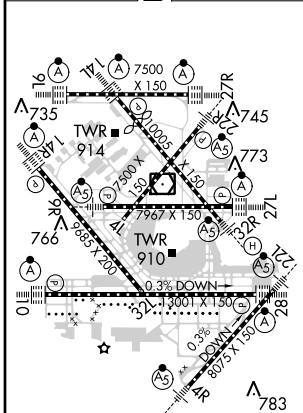
CHICAGO-O'HARE INTL (ORD)

Simultaneous approach authorized with Rwy 14R. **ALS-2** MISSED APPROACH: Climb to 1200 then climbing left turn to 4000 via heading 059° and ORD R-089 to LAIRD INT and hold, continue climb-in-hold to 4000.

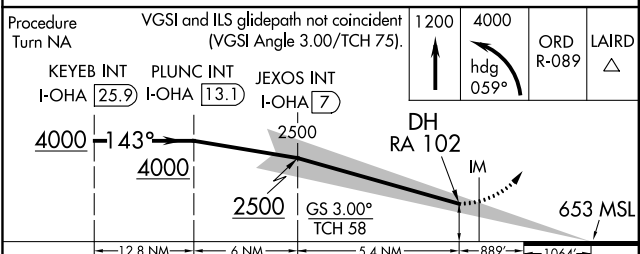
ATIS 282.225	CHICAGO APP CON 119.0 393.1	O'HARE TOWERS (Rwy 9L/27R) 128.15 126.9 132.7 348.0 (CENTER)	(TWR NORTH) GND CON 124.125	(TWR CENTER) CON 121.75 (OBND) 121.9 (IBND) 226.675	CLNC DEL 121.6
------------------------	---------------------------------------	---	---------------------------------------	---	--------------------------



ELEV 672	D	TDZE 653
----------	----------	----------



HIRL all Rwy's
TDZ/CL all Rwy's except 4L and 32L



CATEGORY	A	B	C	D
S-ILS 14L	RA 102/12 100 DA 753			

CATEGORY II ILS - SPECIAL AIRCREW & AIRCRAFT CERTIFICATION REQUIRED

EC-3, 07 FEB 2013 to 07 MAR 2013

EC-3, 07 FEB 2013 to 07 MAR 2013