

LOC/DME I-MED <b>111.1</b> Chan <b>48</b>	APP CRS <b>093°</b>	Rwy Idg <b>12246</b> TDZE <b>672</b> Apt Elev <b>672</b>
---	------------------------	--

# ILS RWY 10 (CAT II)

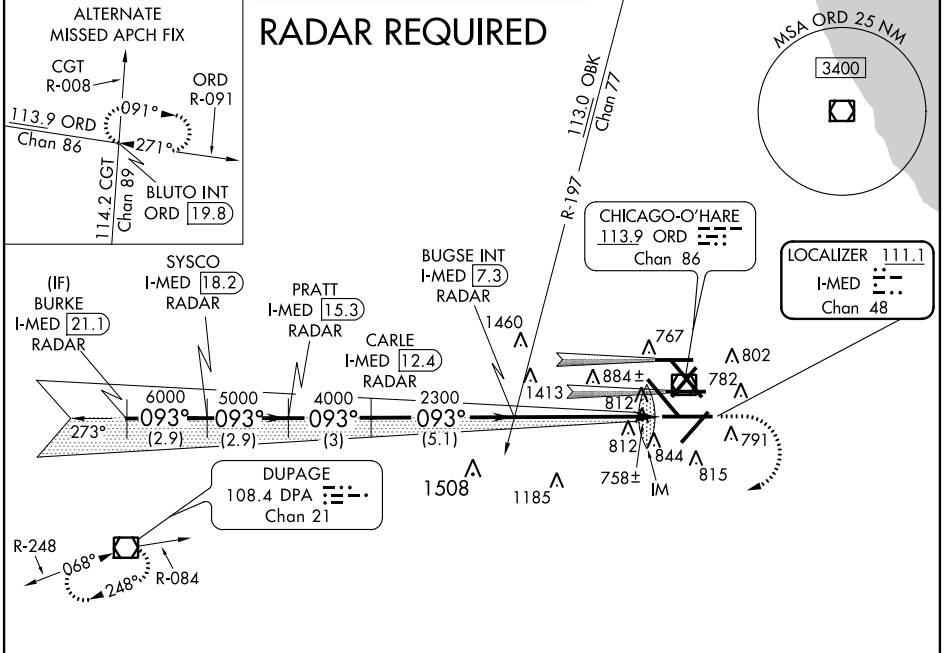
## CHICAGO-O'HARE INTL (ORD)

Simultaneous approach authorized with Rwy 9R/L. DME or RADAR required.

ALSIF-2

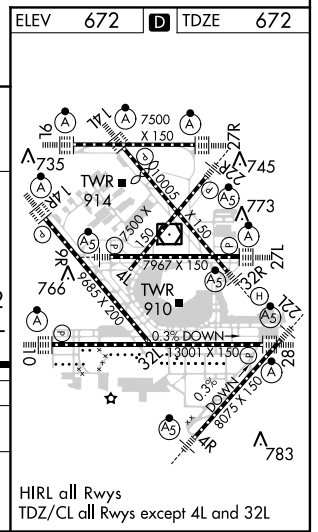
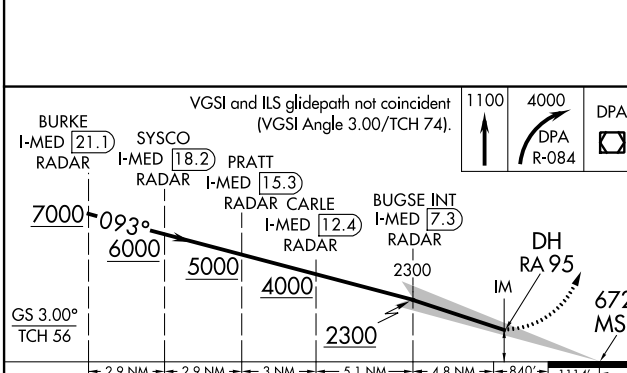
MISSED APPROACH: Climb to 1100 then climbing right turn to 4000 via DPA VOR/DME R-084 to DPA VOR/DME and hold.

ATIS <b>135.4</b> <b>282.225</b>	CHICAGO APP CON <b>119.0 393.1</b>	O'HARE TOWERS <b>128.15</b> (Rwy 9L/27R) <b>120.75 126.9 132.7 348.0</b> (CENTER)	(TWR NORTH) GND CON (TWR CENTER) <b>124.125</b> <b>121.75</b> (OBND) <b>121.9</b> (IBND) <b>226.675</b>	CLNC DEL <b>121.6</b>
--	---------------------------------------	---	--	--------------------------



EC-3, 07 FEB 2013 to 07 MAR 2013

EC-3, 07 FEB 2013 to 07 MAR 2013



CATEGORY	A	B	C	D
S-ILS 10	RA 95/12 100 DA 772			

**CATEGORY II ILS - SPECIAL AIRCREW & AIRCRAFT CERTIFICATION REQUIRED**