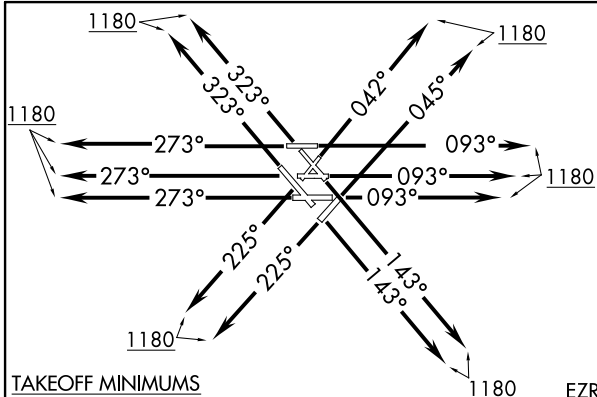


EARND ONE DEPARTURE (RNAV)



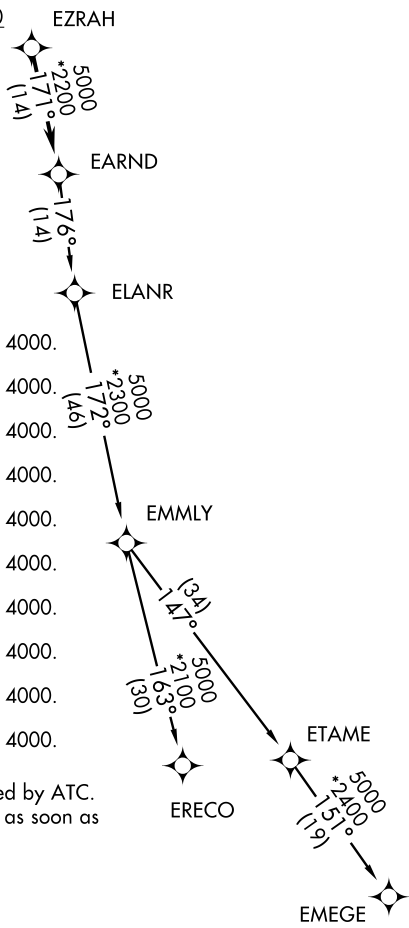
ATIS
 135.4 282.225
 GND CON
 121.75 (Outbound)
 124.125 (TWR NORTH)
 226.675
 O'HARE TOWERS
 128.15 (RWY 09L-27R)
 120.75 126.9(CENTER)
 132.7 348.0(CENTER)
 CHICAGO DEP CON SOUTH
 126.625 269.5

TAKEOFF MINIMUMS

- Rwy 4L: Standard with minimum climb of 547' per NM to 3000, then minimum climb of 350' per NM to 4000.
- Rwy 4R: Standard with minimum climb of 690' per NM to 3000, then minimum climb of 350' per NM to 4000.
- Rwy 9L: Standard with minimum climb of 570' per NM to 3000, then minimum climb of 350' per NM to 4000.
- Rwy 9R: Standard with minimum climb of 541' per NM to 3000, then minimum climb of 350' per NM to 4000.
- Rwy 10: Standard with minimum climb of 672' per NM to 3000, then minimum climb of 350' per NM to 4000.
- Rwy 14L: Standard with minimum climb of 547' per NM to 3000, then minimum climb of 350' per NM to 4000.
- Rwy 14R: Standard with minimum climb of 670' per NM to 3000, then minimum climb of 350' per NM to 4000.
- Rwy 22L: Standard with minimum climb of 807' per NM to 3000, then minimum climb of 350' per NM to 4000.
- Rwy 22R: Standard with minimum climb of 521' per NM to 3000, then minimum climb of 350' per NM to 4000.
- Rwy 27L: Standard with minimum climb of 532' per NM to 3000, then minimum climb of 350' per NM to 4000.
- Rwy 27R: Standard with minimum climb of 631' per NM to 3000, then minimum climb of 350' per NM to 4000.
- Rwy 28: Standard with minimum climb of 685' per NM to 3000, then minimum climb of 350' per NM to 4000.
- Rwy 32L: Standard with minimum climb of 631' per NM to 3000, then minimum climb of 350' per NM to 4000.
- Rwy 32R: Standard with minimum climb of 587' per NM to 3000, then minimum climb of 350' per NM to 4000.

- NOTE: Turbojet departures maintain 250K until advised by ATC.
- NOTE: If unable to accept climb gradient, advise ATC as soon as possible prior to departure.
- NOTE: DME/DME/IRU or GPS required.
- NOTE: RNAV 1.
- NOTE: RADAR required.

(NARRATIVE ON FOLLOWING PAGE)



NOTE: Chart not to scale.

EARND ONE DEPARTURE (RNAV)

EC-3, 07 FEB 2013 to 07 MAR 2013

EC-3, 07 FEB 2013 to 07 MAR 2013