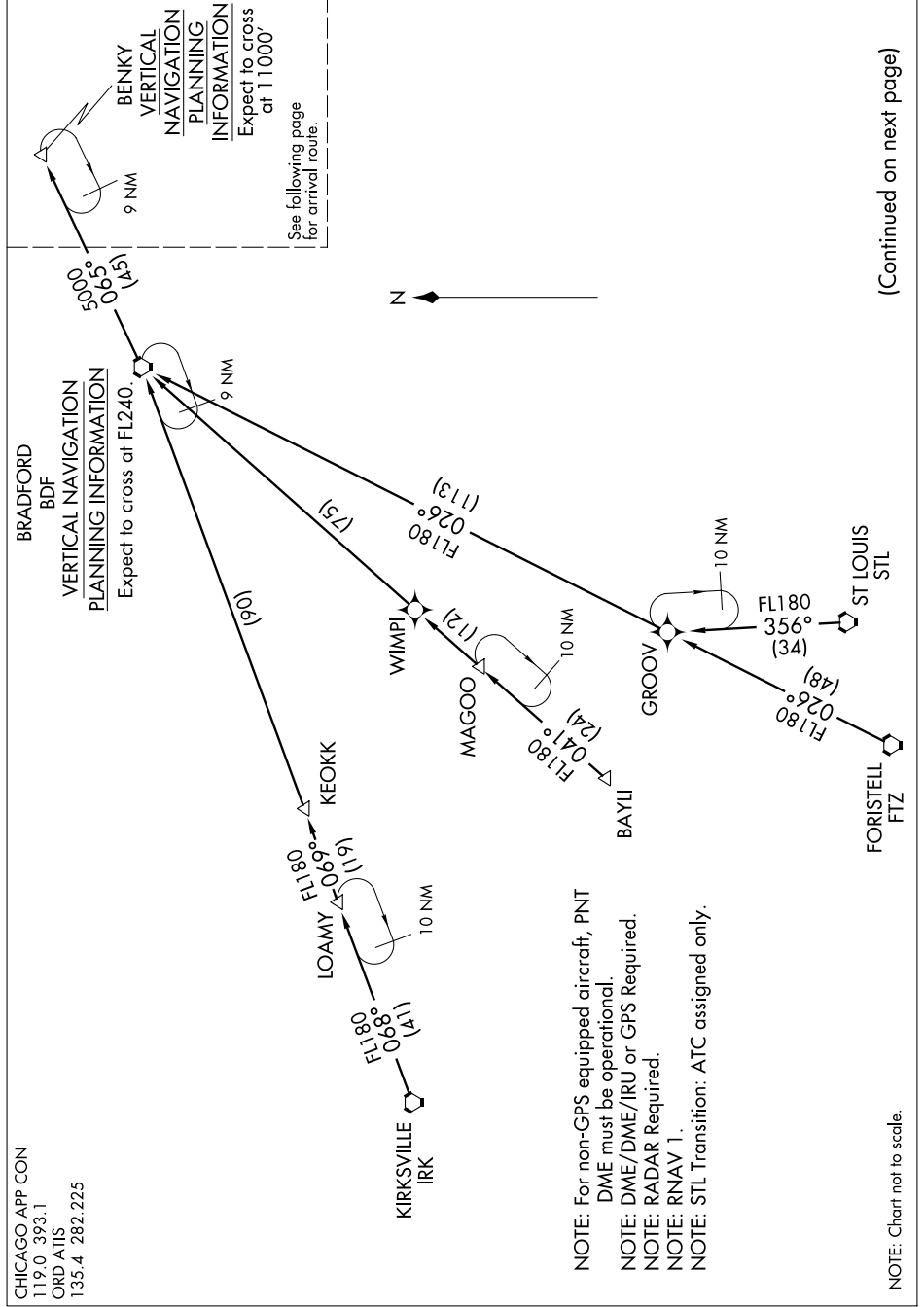


BENKY ONE ARRIVAL (RNAV) Transition Routes

EC-3, 07 FEB 2013 to 07 MAR 2013



CHICAGO APP CON
119.0 393.1
ORD ATIS
135.4 282.225

- NOTE: For non-GPS equipped aircraft, PNT DME must be operational.
- NOTE: DME/DME/IRU or GPS Required.
- NOTE: RADAR Required.
- NOTE: RNAV 1.
- NOTE: STL Transition: ATC assigned only.

NOTE: Chart not to scale.

(Continued on next page)