

VORTAC VUH 113.0 Chan 77	APP CRS 143°	Rwy Idg THRE Apt Elev 6000 5 6
---------------------------------------	------------------------	--

VOR RWY 14

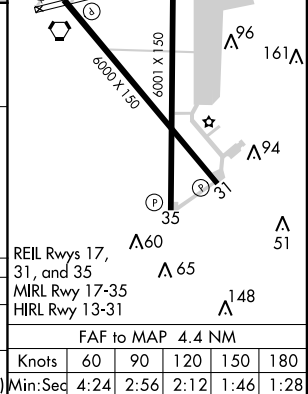
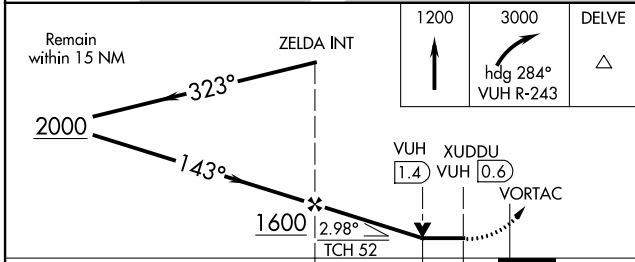
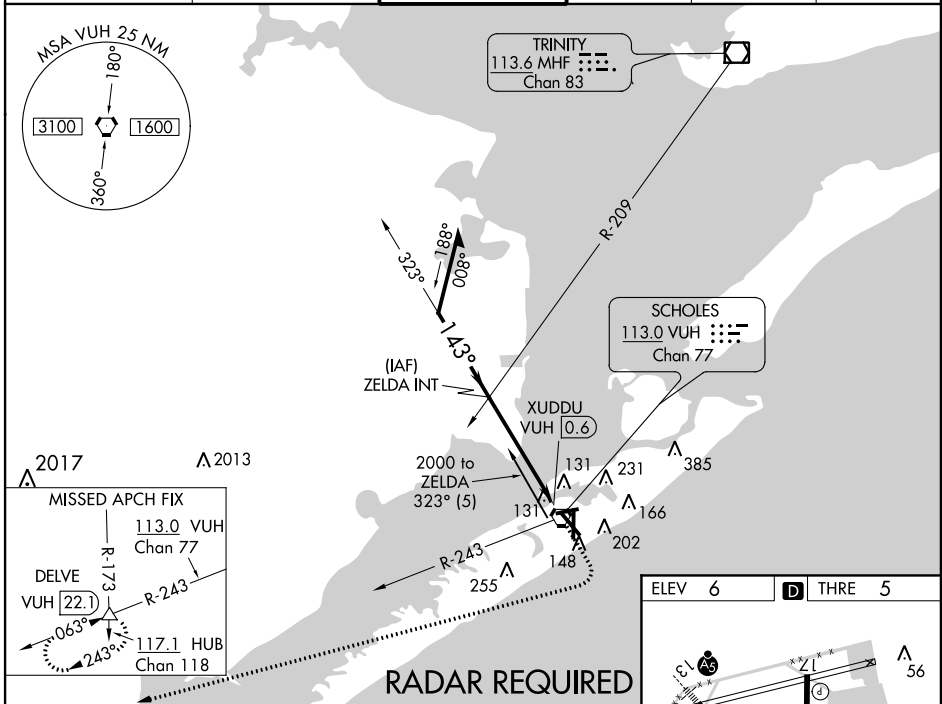
GALVESTON/SCHOLES INTL AT GALVESTON (GLS)

VDP NA when using William P Hobby altimeter setting. Circling NA east of Rwy 18 and northeast of Rwy 32. When local altimeter setting not received, use William P Hobby altimeter setting and increase all MDA 80 feet, increase S-14 Cat C/D/E visibility to 1 mile, and Circling Cat E visibility to 2½ mile. For inoperative MALS, increase S-14 Cat E visibility to 1½ mile. For inoperative MALS, increase S-14 Cat E visibility to 1½ mile.

MALS

MISSED APPROACH: Climb to 1200 then climbing right turn to 3000 on heading 284° and on VUH VORTAC R-243 to DELVE INT/VUH 22.1 DME and hold.

ASOS 119.275	HOUSTON APP CON 134.45 284.0	GALVESTON TOWER * 120.575 (CTAF) 0	GND CON 118.625	CLNC DEL 135.35 (When tower closed)	UNICOM 123.05
------------------------	--	---	---------------------------	--	-------------------------



CATEGORY	A	B	C	D	E
S-14	460-½	455 (500-½)	460-⅞	455 (500-⅞)	
CIRCLING	500-1	494 (500-1)	500-1½ 494 (500-1½)	560-2 554 (600-2)	620-2¼ 614 (700-2¼)

SC-5, 07 FEB 2013 to 07 MAR 2013

SC-5, 07 FEB 2013 to 07 MAR 2013