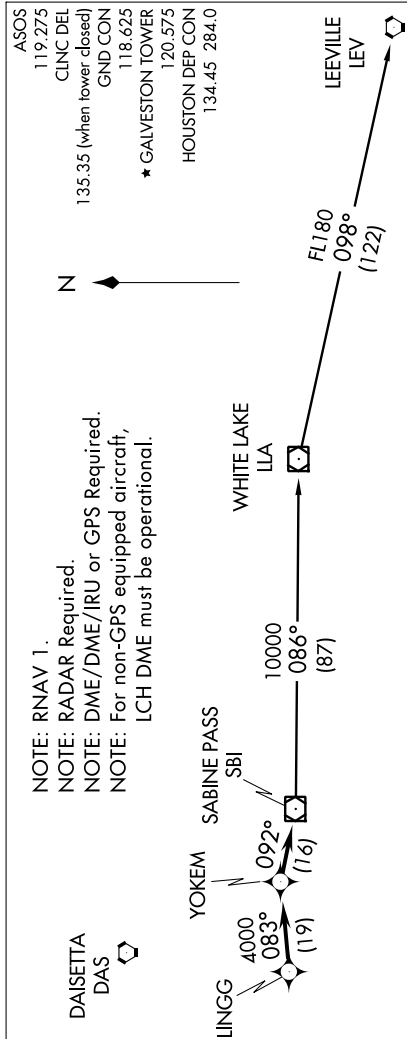


SABINE PASS TWO DEPARTURE (RNAV) SL-164 (FAA)

SC-5, 07 FEB 2013 to 07 MAR 2013



- ASOS 119.275
- CLNC DEL 135.35 (when tower closed)
- GND CON 118.625
- * GALVESTON TOWER 120.575
- HOUSTON DEP CON 134.45 284.0

NOTE: RNAV 1.
 NOTE: RADAR Required.
 NOTE: DME/DME/IRU or GPS Required.
 NOTE: For non-GPS equipped aircraft, LCH DME must be operational.

DAISETTA
 DAS

TAKE-OFF MINIMUMS:

- Rwy 13, 31, 35, Standard.
- Rwy 17, 300-1 or Standard with a minimum climb of 502' per NM to 300.

TAKE-OFF OBSTACLES:

- Rwy 13: Bush 381' from DER, 533' left of centerline, 15' AGL/20' MSL. Fence 201' from DER, 490' left of centerline, 6' AGL/11' MSL. Tree 343' from DER, 468' right of centerline, 12' AGL/17' MSL.
- Rwy 17: Building 3057' from DER, 339' left of centerline, 123' AGL/130' MSL. Multiple poles beginning 2034' from DER, 87' right of centerline, up to 60' AGL/70' MSL. Multiple transmission towers beginning 636' from DER, 551' right of centerline, up to 55' AGL/60' MSL. Tree 460' from DER, 316' right of centerline, 22' AGL/29' MSL.
- Rwy 31: Multiple cranes beginning 4341' from DER, 1017' left of centerline, up to 131' AGL/131' MSL.
- Rwy 35: Tree 730' from DER, 501' right of centerline, 27' AGL/32' MSL.

NOTE: Chart not to scale.

DEPARTURE ROUTE DESCRIPTION

When entering controlled airspace, climb on assigned heading for radar vectors to LINGG INT, maintain 4000. Thence

. . . . (transition). Expect filed altitude 10 minutes after departure on depicted route to SBI VOR/DME.

LEEVILLE TRANSITION: (SBI2.LEV)
 WHITE LAKE TRANSITION: (SBI2.LLA)

SC-5, 07 FEB 2013 to 07 MAR 2013

SABINE PASS TWO DEPARTURE (RNAV)