

WAAS CH 48831 W36A	APP CRS 359°	Rwy Idg THRE 5 Apt Elev 6	6001
--	------------------------	---	-------------

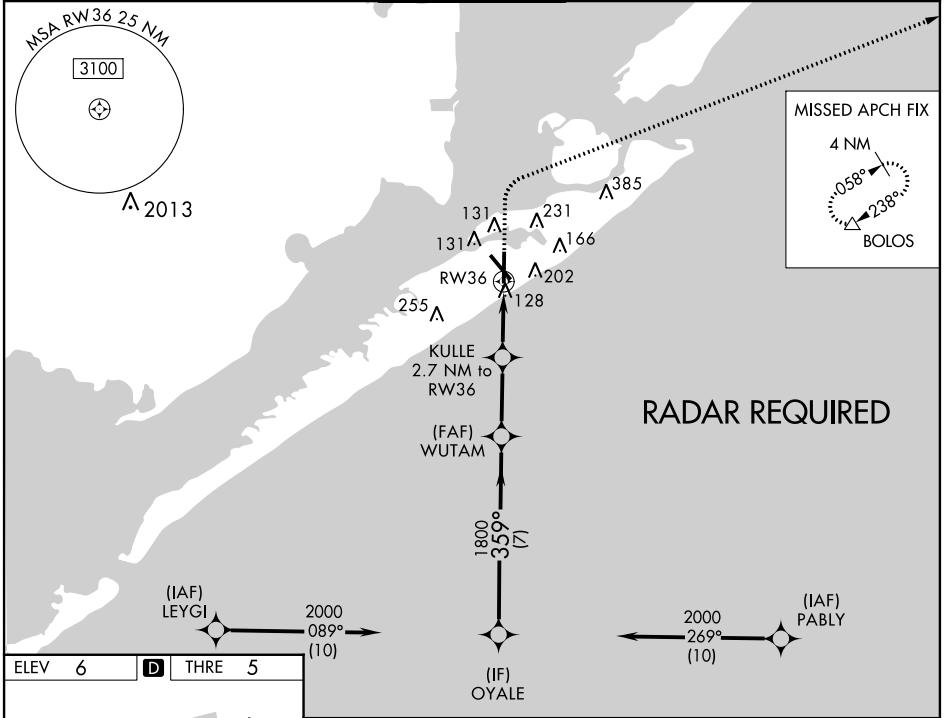
RNAV (GPS) RWY 36

GALVESTON/ SCHOLES INTL AT GALVESTON (GLS)

⚠ When VGSI inop. Straight-in/Circling Rwy 36 procedure NA at night. Circling NA east of Rwy 18 and northeast of Rwy 32. DME/DME RNP-0.3 NA. Helicopter visibility reduction below 1 SM NA. When local altimeter setting not received, use William P. Hobby altimeter setting and increase all MDA 80 feet. Increase LP Cat C/D/E visibility to 1 $\frac{3}{8}$ mile, LNAV Cat C/D/E visibility to 1 $\frac{1}{2}$ mile, and Circling Cat E visibility to 2 $\frac{1}{2}$ mile.

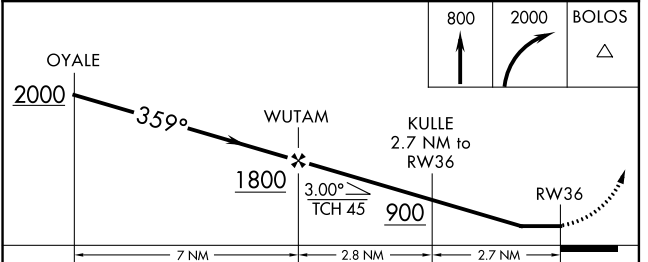
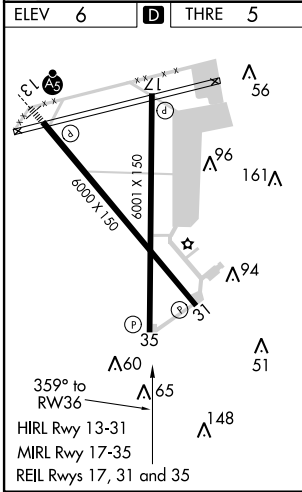
MISSED APPROACH: Climb to 800 then climbing right turn to 2000 direct BOLOS and hold.

ASOS 119.275	HOUSTON APP CON 134.45 284.0	GALVESTON TOWER * 120.575 (CTAF) 0	GND CON 118.625	CLNC DEL 135.35 (When tower closed)	UNICOM 123.05
------------------------	--	---	---------------------------	--	-------------------------



SC-5, 07 FEB 2013 to 07 MAR 2013

SC-5, 07 FEB 2013 to 07 MAR 2013



CATEGORY	A	B	C	D	E
LP MDA	440-1	435 (500-1)	440-1 $\frac{1}{4}$	435 (500-1 $\frac{1}{4}$)	
LNAV MDA	460-1	455 (500-1)	460-1 $\frac{3}{8}$	455 (500-1 $\frac{3}{8}$)	
CIRCLING	500-1	494 (500-1)	500-1 $\frac{1}{2}$ 494 (500-1 $\frac{1}{2}$)	560-2 554 (600-2)	620-2 $\frac{1}{4}$ 614 (700-2 $\frac{1}{4}$)