

WAAS CH <b>40101</b> <b>W32A</b>	APP CRS <b>318°</b>	Rwy Idg THRE Apt Elev	<b>6000</b> <b>5</b> <b>6</b>
--	------------------------	-----------------------------	-------------------------------------

# RNAV (GPS) RWY 32

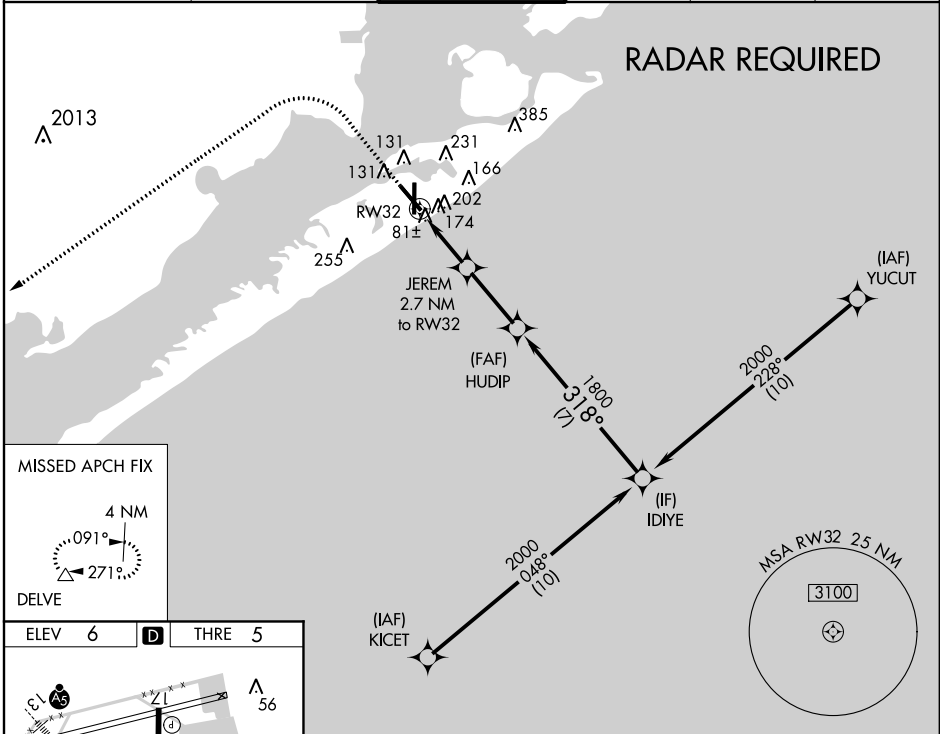
GALVESTON/ SCHOLES INTL AT GALVESTON (GLS)

**⚠** Circling NA east of Rwy 18 and northeast of Rwy 32. DME/DME RNP-0.3 NA. Helicopter visibility reduction below 3/4 SM NA. VDP NA with William P. Hobby altimeter setting. When local altimeter setting not received, use William P. Hobby altimeter setting and increase all MDA 80 feet. Increase LP Cat C/D/E visibility to 1%, increase LNAV Cat C/D/E visibility to 1% and increase Cat E Circling visibility to 2 1/2.

**MISSED APPROACH:**  
Climb to 800 then climbing left turn to 3000 direct DELVE and hold.

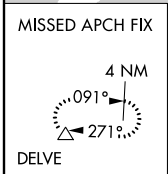
ASOS <b>119.275</b>	HOUSTON APP CON <b>134.45 284.0</b>	<b>GALVESTON TOWER *</b> <b>120.575</b> (CTAF) <b>0</b>	GND CON <b>118.625</b>	CLNC DEL <b>135.35</b> (When tower closed)	UNICOM <b>123.05</b>
------------------------	--	--	---------------------------	--	-------------------------

## RADAR REQUIRED

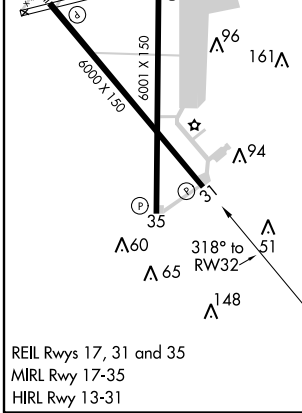


SC-5, 07 FEB 2013 to 07 MAR 2013

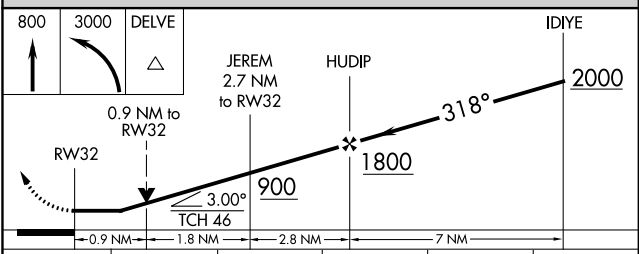
SC-5, 07 FEB 2013 to 07 MAR 2013



ELEV 6	<b>D</b>	THRE 5
--------	----------	--------



REIL Rwy 17, 31 and 35  
MIRL Rwy 17-35  
HIRL Rwy 13-31



CATEGORY	A	B	C	D	E
LP MDA	340-1		335 (400-1)		
LNAV MDA	440-1 435 (500-1)		440-1 1/4 435 (500-1 1/4)		
CIRCLING	500-1 494 (500-1)		500-1 1/2 494 (500-1 1/2)	560-2 554 (600-2)	620-2 1/4 614 (700-2 1/4)