

WAAS CH <b>82301</b> <b>W18A</b>	APP CRS <b>179°</b>	Rwy Idg THRE Apt Elev <b>6001</b> <b>6</b> <b>6</b>
--	------------------------	--

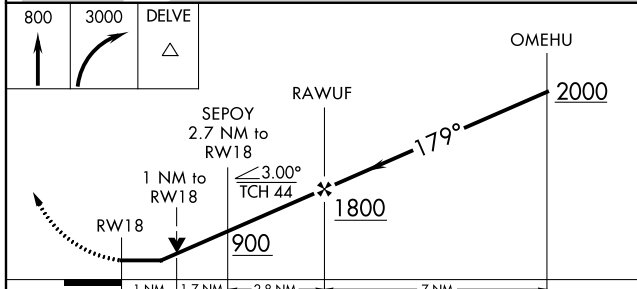
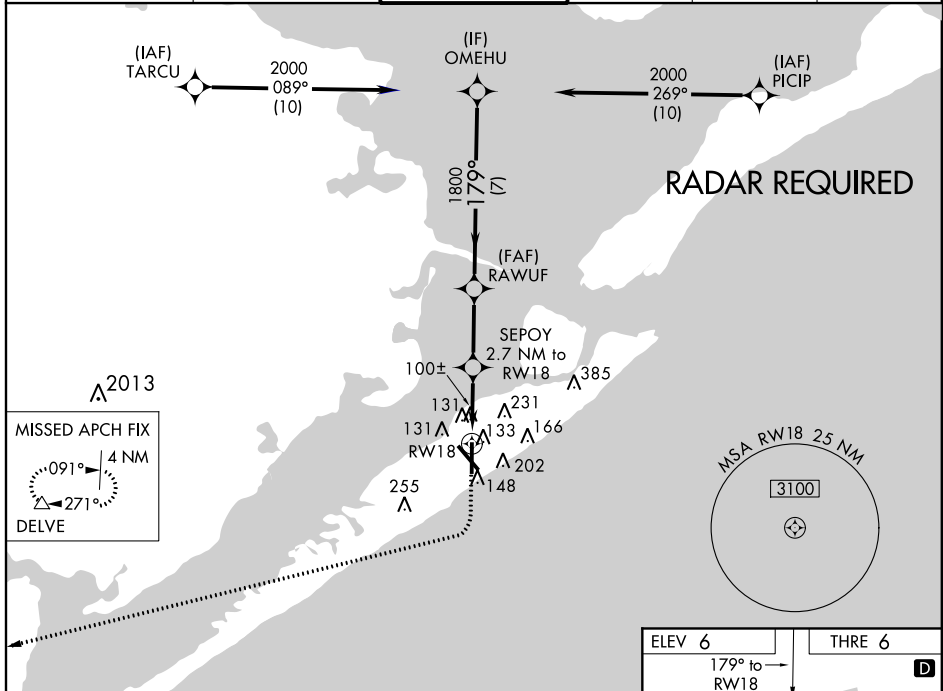
# RNAV (GPS) RWY 18

GALVESTON/ SCHOLES INTL AT GALVESTON (GLS)

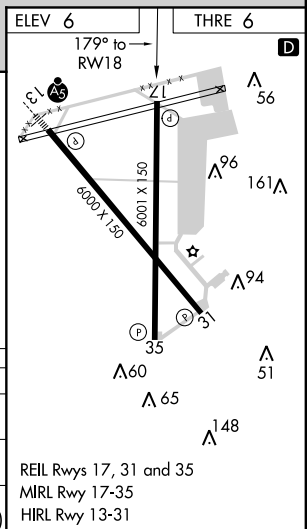
**⚠** Circling NA east of Rwy 18 and northeast of Rwy 32. DME/DME RNP-0.3 NA. Helicopter visibility reduction below 3/4 SM NA. When local altimeter not received, use William P. Hobby altimeter setting and increase all MDA 80 feet, increase LP Cats C/D/E visibility to 1 1/4 mile. LNAV Cats C/D/E visibility to 1 3/8 mile, and Circling Cat E visibility to 2 1/2 mile. VDP NA with William P. Hobby altimeter setting.

**⚠** MISSED APPROACH: Climb to 800 then climbing right turn to 3000 direct DELVE and hold.

ASOS <b>119.275</b>	HOUSTON APP CON <b>134.45 284.0</b>	<b>GALVESTON TOWER*</b> <b>120.575 (CTAF)</b>	GND CON <b>118.625</b>	CLNC DEL <b>135.35</b> (When tower closed)	UNICOM <b>123.05</b>
------------------------	--	--	---------------------------	--	-------------------------



CATEGORY	A	B	C	D	E
LP MDA	360-1 354 (400-1)				
LNAV MDA	400-1	394 (400-1)	400-1 1/8	394 (400-1 1/8)	
CIRCLING	500-1	494 (500-1)	500-1 1/2 494 (500-1 1/2)	560-2 554 (600-2)	620-2 1/4 614 (700-2 1/4)



SC-5, 07 FEB 2013 to 07 MAR 2013

SC-5, 07 FEB 2013 to 07 MAR 2013