

WAAS CH 65606 W14A	APP CRS 138°	Rwy Idg THRE 5 Apt Elev 6	6000
--	------------------------	---	-------------

RNAV (GPS) RWY 14

GALVESTON/ SCHOLLES INTL AT GALVESTON (GLS)

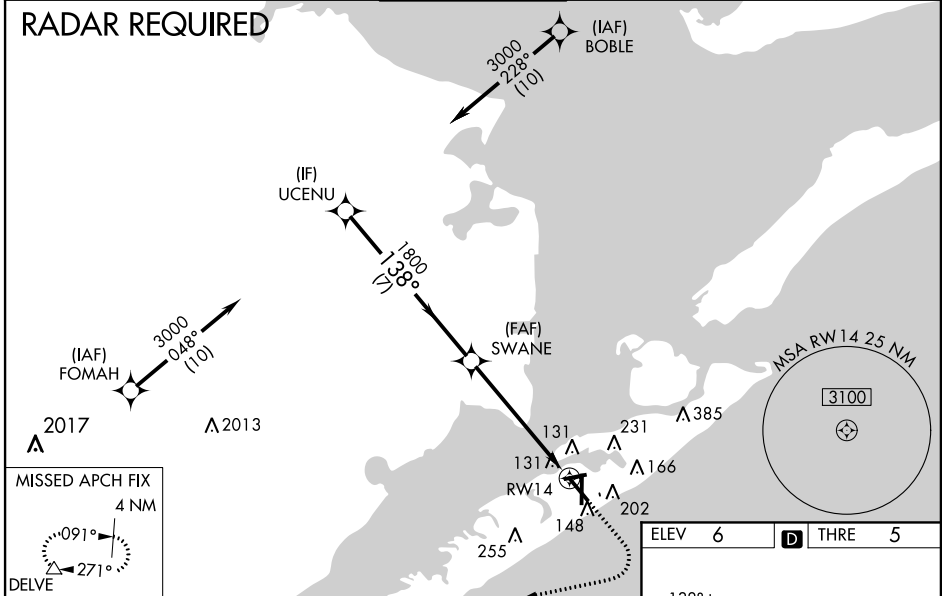
⚠ Baro-VNAV and VDP NA when using William P Hobby altimeter setting. For uncompensated Baro-VNAV systems, LNAV/VNAV NA below 1°C (34°F) or above 54°C (130°F). Circling NA east of Rwy 18 and northeast Rwy 32. DME/DME RNP-0.3 NA. When local altimeter setting not received, use William P Hobby altimeter setting and increase all DA 79 feet and all MDA 80 feet. Increase LNAV/VNAV all Cats visibility to ¾ mile, LNAV Cats C/D/E visibility to 1 mile, and Circling Cat E visibility to 2½ mile. For inoperative MALSR, increase LPV Cat E visibility to ¾, LNAV/VNAV Cat E visibility to 1½, and LNAV Cat E visibility to 1¾ mile. For inoperative MALSR when using William P Hobby altimeter setting, increase LPV all Cats visibility to ¾ mile, LNAV Cat E visibility to 1½ mile.

MALSR

MISSED APPROACH:
Climb to 1200 then climbing right turn to 3000 direct DELVE and hold.

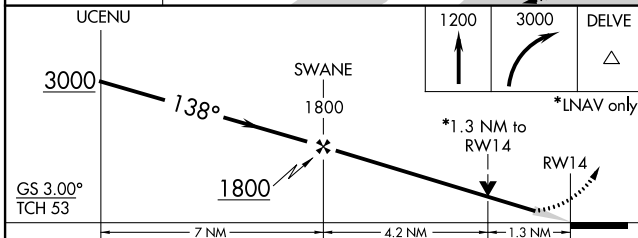
ASOS 119.275	HOUSTON APP CON 134.45 284.0	GALVESTON TOWER * 120.575 (CTAF) 0	GND CON 118.625	CLNC DEL 135.35 (When tower closed)	UNICOM 123.05
------------------------	--	--	---------------------------	--	-------------------------

RADAR REQUIRED

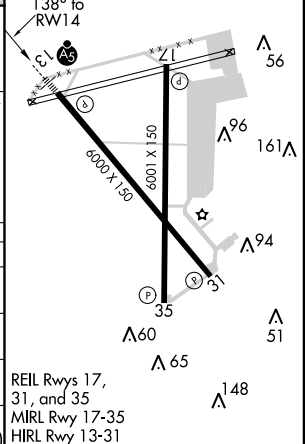


SC-5, 07 FEB 2013 to 07 MAR 2013

SC-5, 07 FEB 2013 to 07 MAR 2013



ELEV 6	THRE 5
--------	--------



CATEGORY	A	B	C	D	E
LPV DA	205-½		200 (200-½)		
LNAV/VNAV DA	342-5/8		337 (400-5/8)		
LNAV MDA	460-½ 455 (500-½)		460-7/8 455 (500-7/8)		
CIRCLING	500-1	494 (500-1)	500-1½ 494 (500-1½)	560-2 554 (600-2)	620-2¼ 614 (700-2¼)

REIL Rws 17, 31, and 35
MRL Rwy 17-35
HIRL Rwy 13-31