

LOC I-GLS 111.7	APP CRS 138°	Rwy Idg THRE Apt Elev	6000 5 6
---------------------------	------------------------	-----------------------------	-------------------------------------

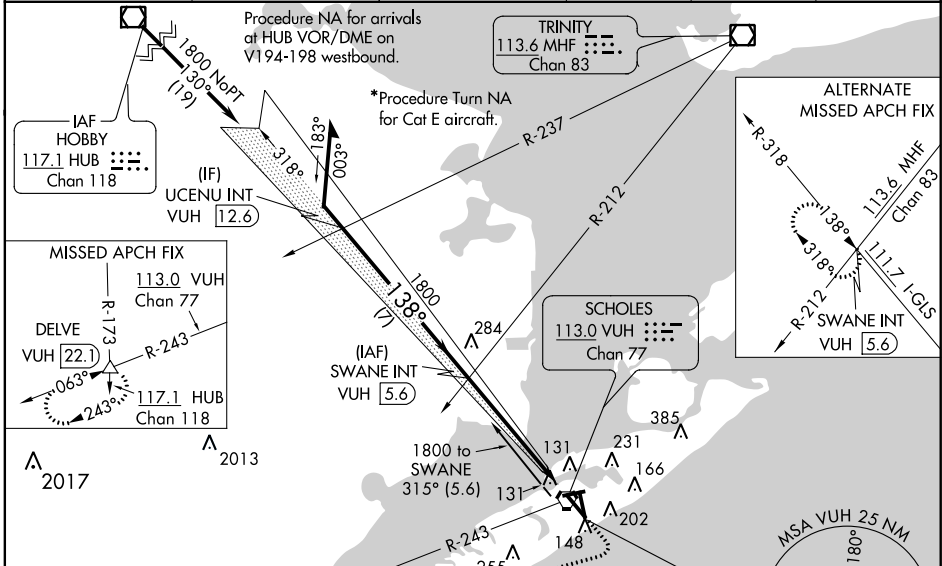
ILS or LOC RWY 14

GALVESTON/SCHOLES INTL AT GALVESTON (GLS)

NA Circling NA east of Rwy 18 and northeast of Rwy 32. When local altimeter setting not received, use William P Hobby altimeter setting and increase all DA and MDA 80 feet, increase S-LOC 14 Cat C/D/E visibility to 1 mile, and Circling Cat E visibility to 2 1/2 mile. For inoperative MALSR, increase S-ILS 14 Cat E visibility to 3/4 and S-LOC 14 Cat E visibility to 1 3/8 mile. For inoperative MALSR when using William P Hobby altimeter setting, increase S-ILS 14 all Cats visibility to 7/8 mile, and S-LOC 14 Cat E visibility to 1 1/2 mile.

MALSR
MISSED APPROACH: Climb to 1200 then climbing right turn to 3000 on heading 284° and on VUH VORTAC R-243 to DELVE INT/VUH 22.1 DME and hold.

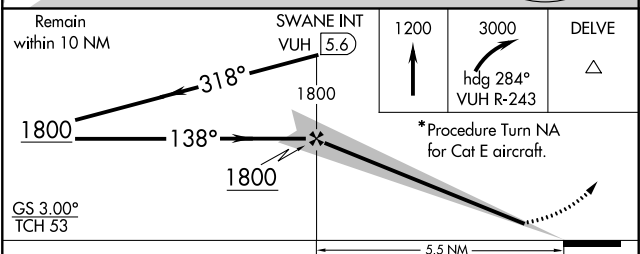
ASOS 119.275	HOUSTON APP CON 134.45 284.0	GALVESTON TOWER * 120.575 (CTAF) 0	GND CON 118.625	CLNC DEL 135.35 (When tower closed)	UNICOM 123.05
------------------------	--	--	---------------------------	--	-------------------------



SC-5, 07 FEB 2013 to 07 MAR 2013

SC-5, 07 FEB 2013 to 07 MAR 2013

ELEV 6	THRE 5
REIL Rwys 17, 31, and 35	MIRL Rwy 17-35
HIRL Rwy 13-31	
FAF to MAP 5.5 NM	
Knots	60 90 120 150 180
Min:Sec	5:30 3:40 2:45 2:12 1:50



CATEGORY	A	B	C	D	E
S-ILS 14	205-1/2 200 (200-1/2)				
S-LOC 14	460-1/2	455 (500-1/2)	460-7/8	455 (500-7/8)	
CIRCLING	500-1	494 (500-1)	500-1 1/2 494 (500-1 1/2)	560-2 554 (600-2)	620-2 1/4 614 (700-2 1/4)