

(BOWFN3.BOWFN) 11293

GALVESTON/SCHOLES INTL AT GALVESTON (GLS)

BOWFN THREE DEPARTURE (RNAV) SL-164 (FAA)

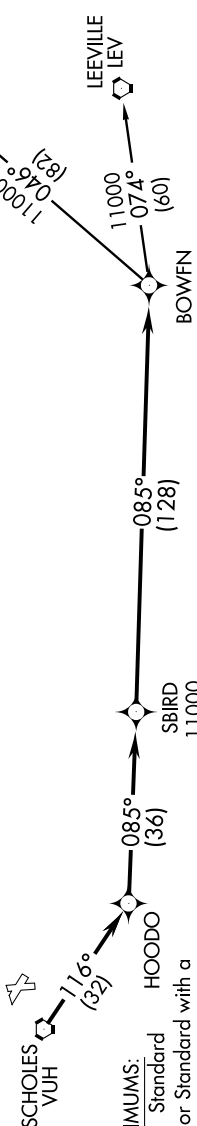
GALVESTON, TEXAS

SC-5, 07 FEB 2013 to 07 MAR 2013

ASOS 119.275
CLNC DEL
135.35 (when tower closed)
GND CON 118.625
GALVESTON TOWER ★
120.575
HOUSTON DEP CON
134.45 284.0

TAKE-OFF OBSTACLES:

- Rwy 13, Bush 381' from DER, 533' left of centerline, 15' AGL/20' MSL. Fence 201' from DER, 490' left of centerline, 6' AGL/11' MSL. Tree 343' from DER, 468' right of centerline, 12' AGL/17' MSL.
- Rwy 17, Building 3057' from DER, 339' left of centerline, 123' AGL/130' MSL. Multiple poles beginning 2034' from DER, 87' right of centerline, up to 60' AGL/70' MSL.
- Multiple transmission towers beginning 636' from DER, 551' right of centerline, up to 55' AGL/60' MSL. Tree 460' from DER, 316' right of centerline, 22' AGL/29' MSL.
- Rwy 31, Multiple cranes beginning 4341' from DER, 1017' left of centerline, up to 131' AGL/131' MSL.
- Rwy 35, Tree 730' from DER, 501' right of centerline, 27' AGL/32' MSL.



TAKE-OFF MINIMUMS:

- Rwy 13, 31, 35 Standard
- Rwy 17, 300-1 or Standard with a minimum climb of 502' per NM to 300'.

DEPARTURE ROUTE DESCRIPTION

When entering controlled airspace, climb on assigned heading for radar vectors to VUH VORTAC, maintain 4000 or ATC assigned altitude on depicted route to HOODO. Then cross SBIRD at or above 11000' on depicted route to BOWFN. Thence

. . . . (transition). Expect filed altitude 10 minutes after departure.

HARVEY TRANSITION (BOWFN3.HRV)

LEEVILLE TRANSITION (BOWFN3.LEV)

NOTE: RNAV 1.

NOTE: RADAR Required.

NOTE: ATC assigned only. DO NOT FILE.

NOTE: DME/DME/RU or GPS Required.

NOTE: For non-GPS equipped aircraft, LCH, LLA, TBD, and LEV DMEs must be operational.

NOTE: Chart not to scale.

BOWFN THREE DEPARTURE (RNAV)
(BOWFN3.BOWFN) 11293

GALVESTON, TEXAS
GALVESTON/SCHOLES INTL AT GALVESTON (GLS)

SC-5, 07 FEB 2013 to 07 MAR 2013