

FRESNO, CALIFORNIA

AL-162 (FAA)

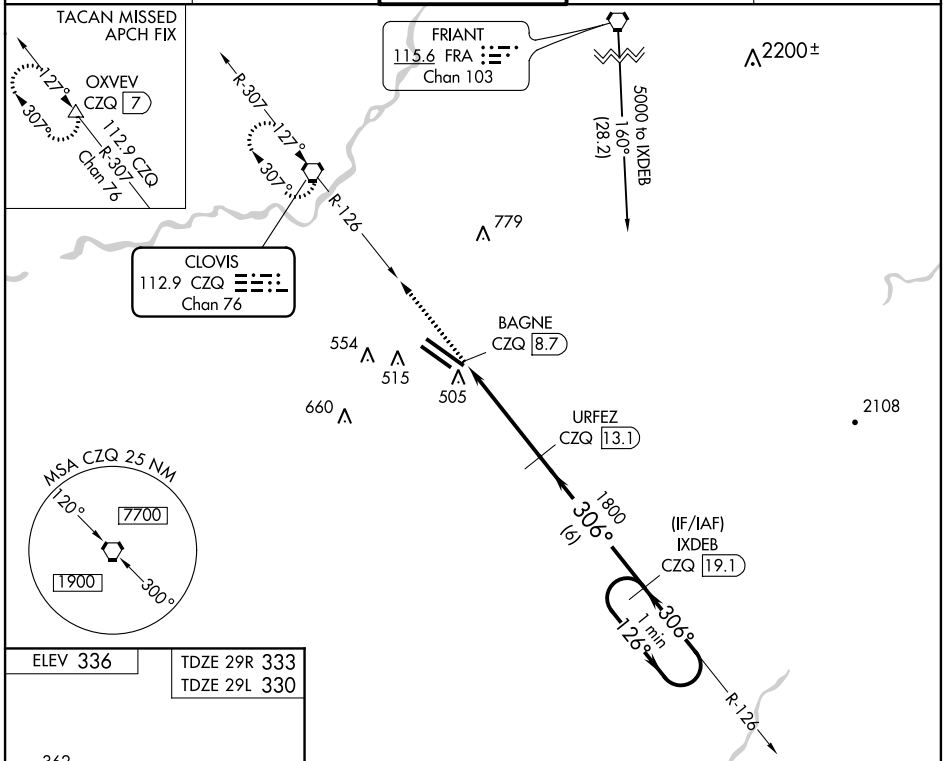
VOR/DME or TACAN RWY 29R

VORTAC CZQ 112.9 Chan 76	APP CRS 306°	Rwy 29R Idg 8915 TDZE 333 Apt Elev 336	Rwy 29L Idg 8008 TDZE 330 Apt Elev 336
---------------------------------------	------------------------	---	---

FRESNO YOSEMITE INTL (FAT)

⚠ For inoperative ALSF-2, increase S-29R Cat E visibility to 1½.
⚠ MISSED APPROACH: Climb to 2000 via CZQ R-126 to CZQ VORTAC and hold. (TACAN aircraft continue climb to 3000 via CZQ R-307 to OXVEV/7 DME and hold (NW, RT, 127° inbound).

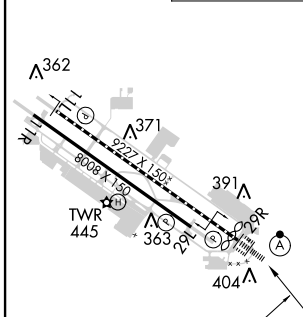
ATIS 121.35 273.6	FRESNO APP CON 119.6 351.95	FRESNO TOWER 118.2 251.1	GND CON 121.7 348.6	CLNC DEL 124.35 348.6
-----------------------------	---------------------------------------	------------------------------------	-------------------------------	---------------------------------



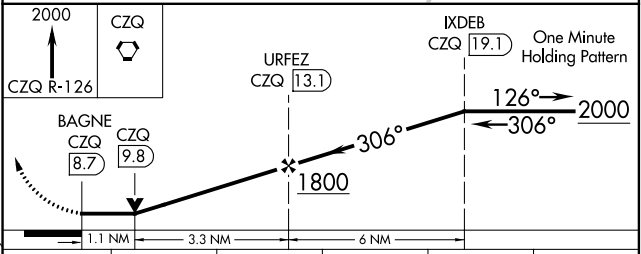
SW-2, 07 FEB 2013 to 07 MAR 2013

SW-2, 07 FEB 2013 to 07 MAR 2013

ELEV 336	TDZE 29R 333 TDZE 29L 330
----------	------------------------------



REIL Rwy 11L and 11R
 HIRL Rwy 11L-29R
 MIRL Rwy 11R-29L
 TDZ/CL Rwy 29R



CATEGORY	A	B	C	D	E
S-29R	760/24 427 (500-½)		760/40 427 (500-¾)	760/50 427 (500-1)	
SIDESTEP 29L	760-1 430 (500-1)		760-1½ 430 (500-1½)	760-2 430 (500-2)	
CIRCLING	820-1 484 (500-1)		820-1½ 484 (500-1½)	920-2 584 (600-2)	1140-2¾ 804 (900-2¾)

FRESNO, CALIFORNIA
 Amdt 1A 13010

36°47'N-119°43'W

FRESNO YOSEMITE INTL (FAT)

VOR/DME or TACAN RWY 29R