

RNAV (GPS) RWY 29R

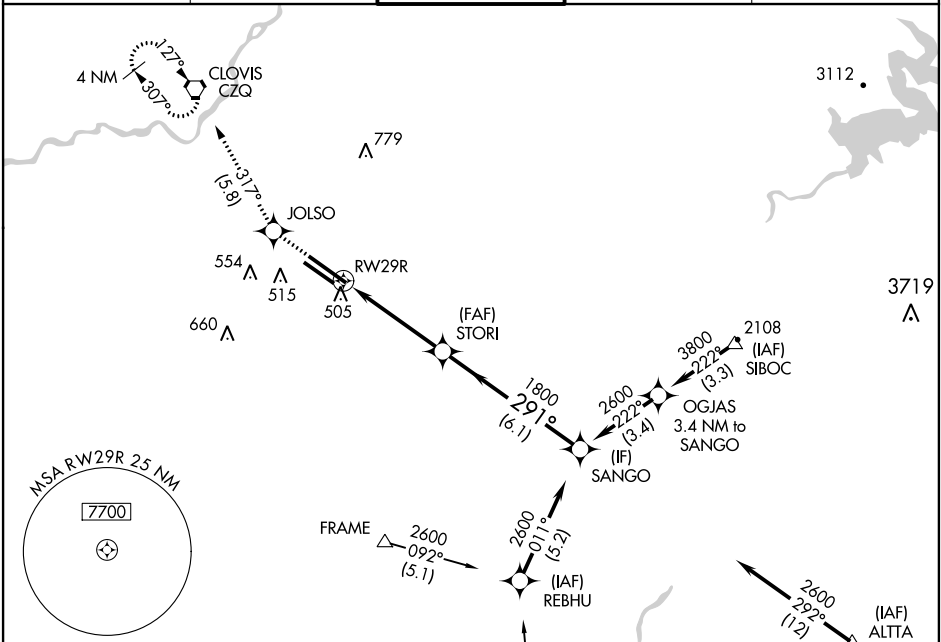
FRESNO YOSEMITE INTL (FAT)

WAAS CH 81803 W29A	APP CRS 291°	Rwy Idg TDZE 333 Apt Elev 336	8915
--	------------------------	---	-------------

ALSF-2
DME/DME RNP-0.3 NA.
Baro-VNAV NA below -15°C (5°F).
For inoperative ALSF-2, increase LPV visibility to RVR 4000, all Cats.

MISSED APPROACH: Climb to 2000 direct JOLSO and via 317° track to CZQ VORTAC and hold.

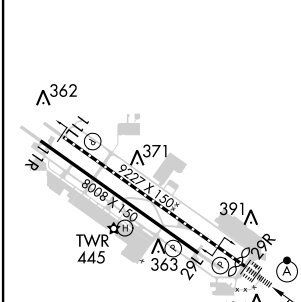
ATIS 121.35 273.6	FRESNO APP CON 119.6 351.95	FRESNO TOWER 118.2 251.1	GND CON 121.7 348.6	CLNC DEL 124.35 348.6
-----------------------------	---------------------------------------	------------------------------------	-------------------------------	---------------------------------



SW-2, 07 FEB 2013 to 07 MAR 2013

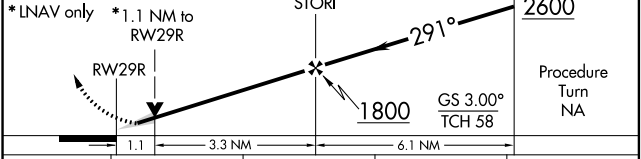
SW-2, 07 FEB 2013 to 07 MAR 2013

ELEV 336	TDZE 333
----------	----------



REIL Rwy 11L and 11R
HIRL Rwy 11L-29R
MIRL Rwy 11R-29L
TDZ/CL Rwy 29R

2000	JOLSO	317° tr	CZQ	VGSI and RNAV glidepath not coincident (VGSI Angle 3.00°/TCH 75).
------	-------	---------	-----	---



CATEGORY	A	B	C	D
LPV DA	590/24 257 (300-½)			
LNAV/VNAV DA	760/50 427 (500-1)			
LNAV MDA	760/24 427 (500-½)	760/40 427 (500-¾)	760/50 427 (500-1)	760/50 427 (500-1)
CIRCLING	820-1½ 484 (500-1½)			920-2 584 (600-2)