

FRESNO, CALIFORNIA

AL-162 (FAA)

RNAV (GPS) RWY 11L

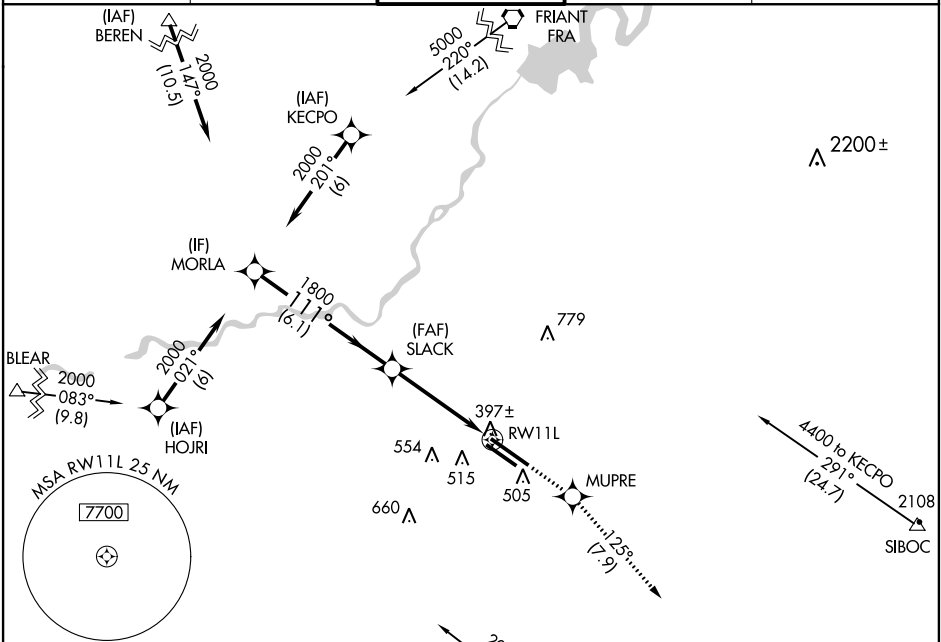
FRESNO YOSEMITE INTL (FAT)

WAAS CH 77505 W11A	APP CRS 111°	Rwy Idg TDZE Apt Elev	9227 336 336
---------------------------------	------------------------	-----------------------------	---

DME/DME RNP-0.3 NA.
Baro-VNAV NA below -15°C (5°F).

MISSED APPROACH: Climb to 2000 direct MUPRE and via 125° track to SELMA and hold.

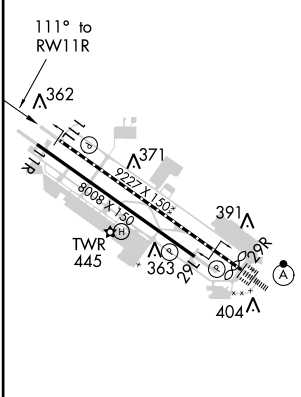
ATIS 121.35 273.6	FRESNO APP CON 119.6 351.95	FRESNO TOWER 118.2 251.1	GND CON 121.7 348.6	CLNC DEL 124.35 348.6
-----------------------------	---------------------------------------	------------------------------------	-------------------------------	---------------------------------



SW-2, 07 FEB 2013 to 07 MAR 2013

SW-2, 07 FEB 2013 to 07 MAR 2013

ELEV 336	TDZE 336
----------	----------



REIL Rwsy 11L and 11R
HIRL Rwy 11L-29R
MIRL Rwy 11R-29L
TDZ/CL Rwy 29R

	MORLA	2000	MUPRE	125° tr	SELMA
Procedure Turn NA					
GS 3.00° TCH 45	2000	111°	SLACK	* 1 NM to RWY11L	* LNAV only
VGSI and descent angles not coincident (VGSI Angle 3.00°/TCH 55).		1800			
	6.1 NM		3.4 NM	1 NM	
CATEGORY	A	B	C	D	
LPV DA	590/50 254 (300-1)				
LNAV/VNAV DA	760-1½ 424 (500-1½)				
LNAV MDA	680/50 344 (400-1)			680/60 344 (400-1½)	
CIRCLING	820-1	484 (500-1)	820-1½ 484 (500-1½)	920-2 584 (600-2)	

FRESNO, CALIFORNIA
Orig-A 13010

36°47'N-119°43'W

FRESNO YOSEMITE INTL (FAT) RNAV (GPS) RWY 11L