

FRESNO, CALIFORNIA

AL-162 (FAA)

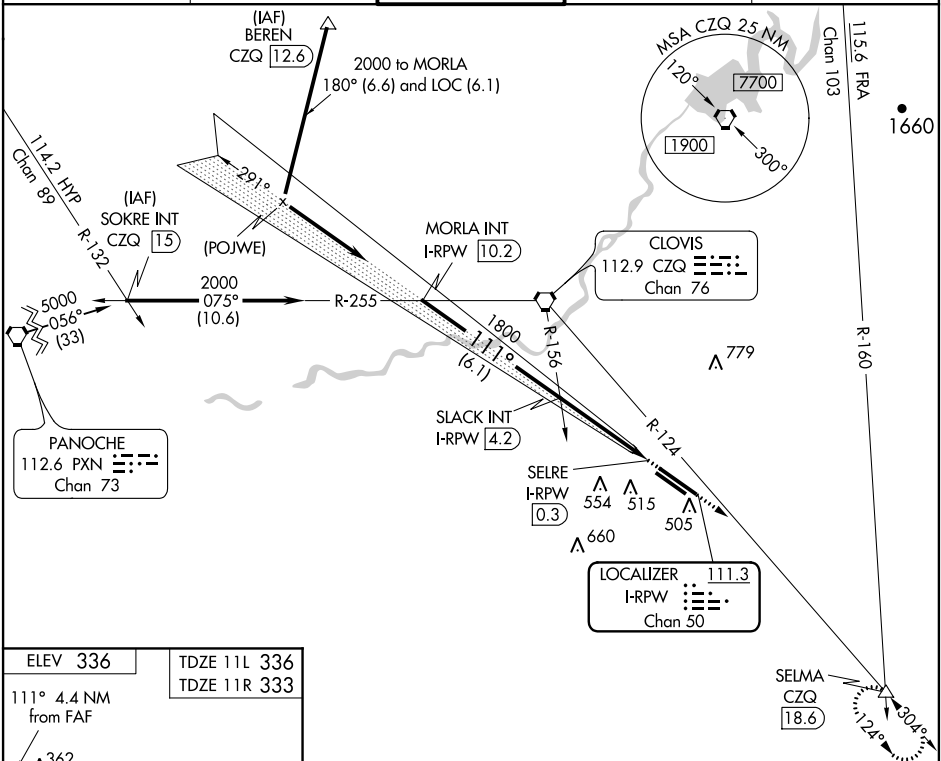
# LOC RWY 11L

FRESNO YOSEMITE INTL (FAT)

LOC/DME I-RPW <b>111.3</b> Chan 50	APP CRS <b>111°</b>	Rwy 11L Idg <b>9227</b> TDZE <b>336</b> Apt Elev <b>336</b>	Rwy 11R Idg <b>8008</b> TDZE <b>333</b> Apt Elev <b>336</b>
--	------------------------	---	---

MISSED APPROACH: Climb to 2000 via heading 111° and CZQ R-124 to SELMA and hold.

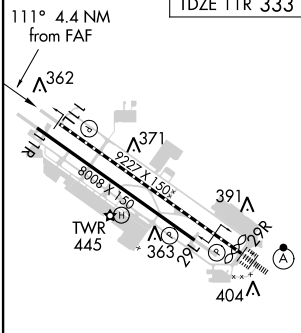
ATIS <b>121.35 273.6</b>	FRESNO APP CON <b>119.6 351.95</b>	FRESNO TOWER <b>118.2 251.1</b>	GND CON <b>121.7 348.6</b>	CLNC DEL <b>124.35 348.6</b>
-----------------------------	---------------------------------------	------------------------------------	-------------------------------	---------------------------------



SW-2, 07 FEB 2013 to 07 MAR 2013

SW-2, 07 FEB 2013 to 07 MAR 2013

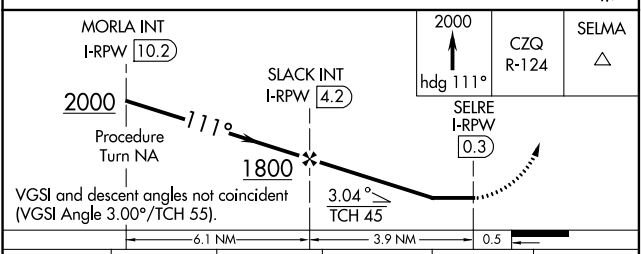
ELEV 336	TDZE 11L 336
	TDZE 11R 333



REIL Rwy 11L and 11R  
HIRL Rwy 11L-29R  
MIRL Rwy 11R-29L  
TDZ/CL Rwy 29R

FAF to MAP 3.9 NM

Knots	60	90	120	150	180
Min:Sec	3:54	2:36	1:57	1:34	1:18



CATEGORY	A	B	C	D	E
S-11L	680/50 344 (400-1)			680/60 344 (400-1¼)	
SIDESTEP 11R	680-1	347 (400-1)	680-1½ 347 (400-1½)	680-2	347 (400-2)
CIRCLING	820-1	484 (500-1)	820-1½ 484 (500-1½)	920-2 584 (600-2)	1140-2¾ 804 (900-2¾)

FRESNO, CALIFORNIA  
Amdt 1B 13010

36°47'N-119°43'W

# FRESNO YOSEMITE INTL (FAT)

## LOC RWY 11L