

FRESNO, CALIFORNIA

AL-162 (FAA)

LOC/DME I-FAT 111.3 Chan 50	APP CRS 291°	Rwy 29R Idg 8915 TDZE 333 Apt Elev 336	Rwy 29L Idg 8008 TDZE 330 Apt Elev 336
--	------------------------	---	---

ILS or LOC/DME RWY 29R

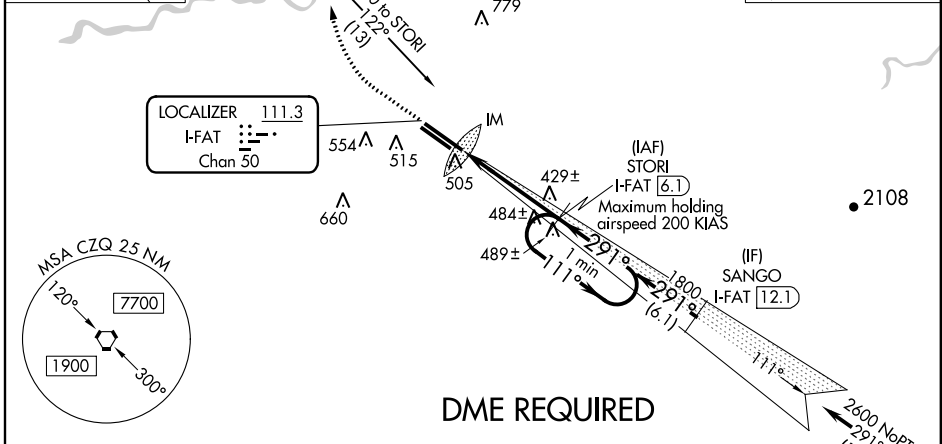
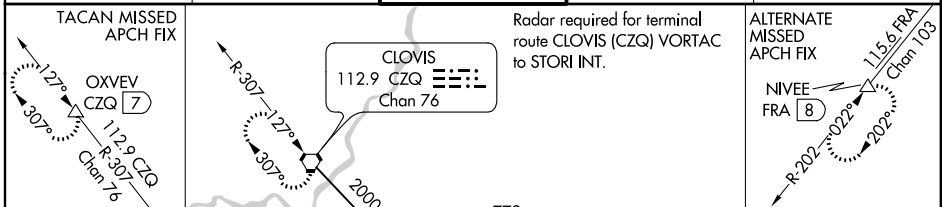
FRESNO YOSEMITE INTL (FAT)

▼ For inoperative ALSF-2, increase S-ILS Cat E visibility to RVR 4000 and S-LOC Cat E visibility to RVR 6000.
▲ Hold in lieu of PT not authorized for Cat E aircraft.

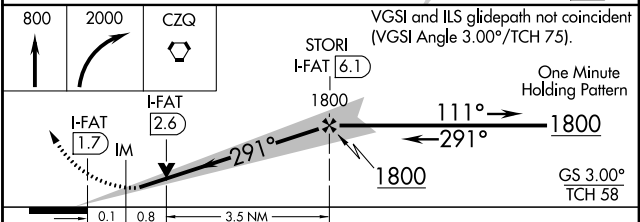
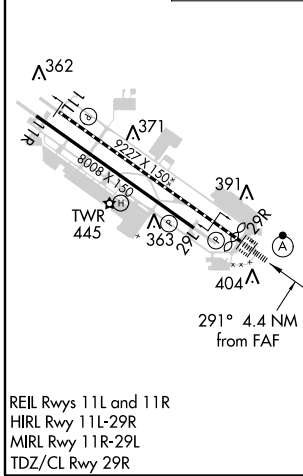
ALSF-2 Rwy 29R

MISSED APPROACH: Climb to 800, then climbing right turn to 2000 direct CZQ VORTAC and hold. (TACAN aircraft climb to 3000 via CZQ VORTAC R-307 to OXVEV/CZQ 7 DME and hold NW, RT, 127° inbound.)

ATIS 121.35 273.6	FRESNO APP CON 119.6 351.95	FRESNO TOWER 118.2 251.1	GND CON 121.7 348.6	CLNC DEL 124.35 348.6
-----------------------------	---------------------------------------	------------------------------------	-------------------------------	---------------------------------



ELEV 336	TDZE 29R 333
	TDZE 29L 330



CATEGORY	A	B	C	D	E
S-ILS 29R	533/18 200 (200-½)				533/24 200 (200-½)
S-LOC 29R	680/24 347 (400-½)			680/40 347 (400-¾)	
SIDESTEP RWY 29L	740-1 410 (500-1)	740-1½ 410 (500-1½)		740-2 410 (500-2)	
CIRCLING	820-1 484 (500-1)	820-1½ 484 (500-1½)	920-2 584 (600-2)	1140-2¾ 804 (900-2¾)	

FRESNO, CALIFORNIA
Amdt 37 13010

36°47'N-119°43'W

ILS or LOC/DME RWY 29R

SW-2, 07 FEB 2013 to 07 MAR 2013

SW-2, 07 FEB 2013 to 07 MAR 2013