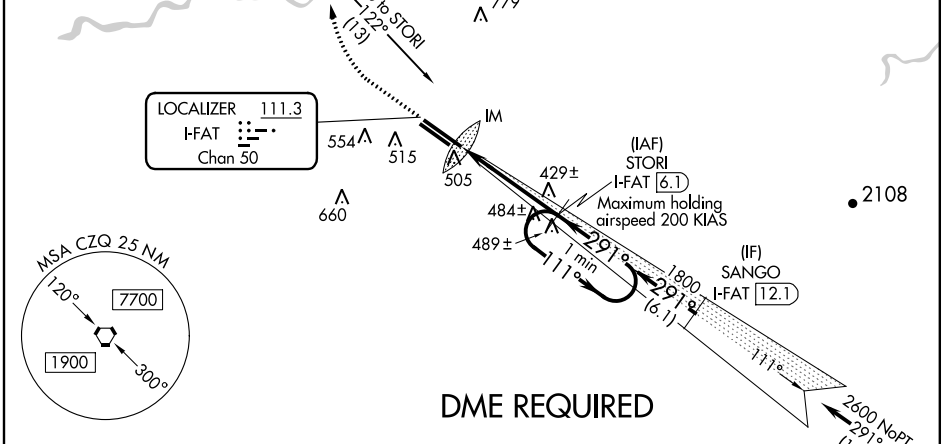
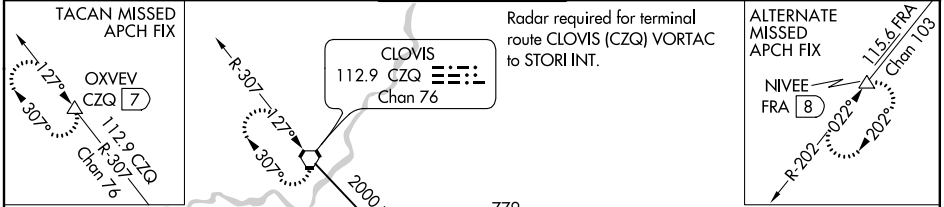


**ILS RWY 29R (CAT III)**  
**FRESNO YOSEMITE INTL (F'AT)**

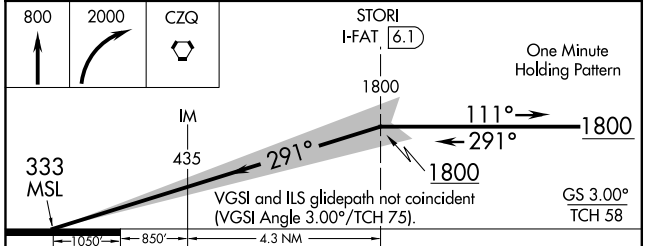
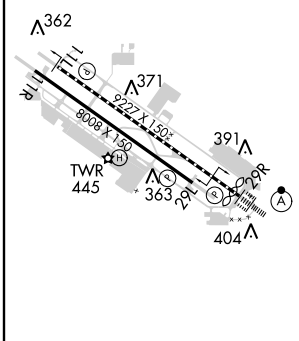
LOC/DME I-FAT <b>111.3</b> Chan 50	APP CRS <b>291°</b>	Rwy Idg TDZE Apt Elev	<b>8915</b> <b>333</b> <b>336</b>
--	------------------------	-----------------------------	---

<b>ALSIF-2</b>	MISSED APPROACH: Climb to 800, then climbing right turn to 2000 direct CZQ VORTAC and hold. (TACAN aircraft climb to 3000 via CZQ VORTAC R-307 to OXVEV/CZQ 7 DME and hold NW, RT, 127° inbound.)			
----------------	---	--	--	--

ATIS <b>121.35 273.6</b>	FRESNO APP CON <b>119.6 351.95</b>	FRESNO TOWER <b>118.2 251.1</b>	GND CON <b>121.7 348.6</b>	CLNC DEL <b>124.35 348.6</b>
-----------------------------	---------------------------------------	------------------------------------	-------------------------------	---------------------------------



ELEV 336	TDZE 333
----------	----------



CATEGORY	A	B	C	D
S-ILS 29R	CAT IIIa	RVR 07		
S-ILS 29R	CAT IIIb	RVR 06		
S-ILS 29R	CAT IIIc	NA		

**CATEGORY III ILS - SPECIAL AIRCREW & AIRCRAFT CERTIFICATION REQUIRED**