

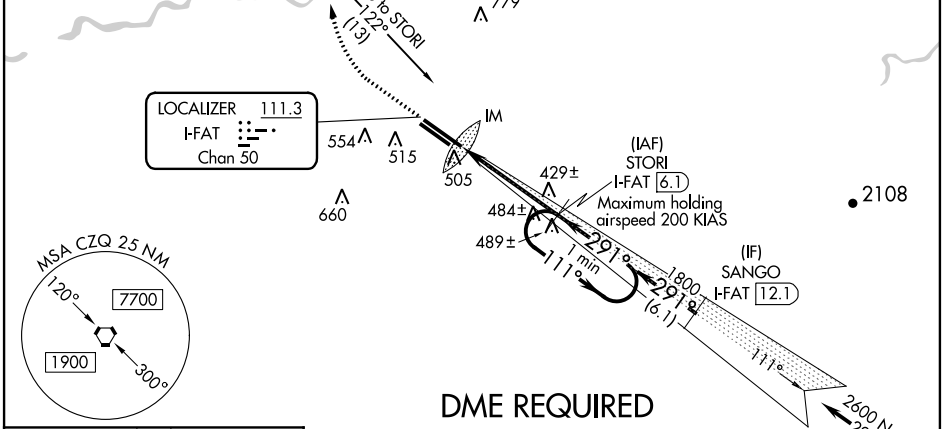
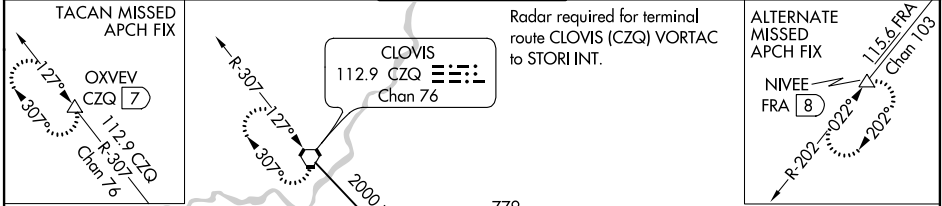
LOC/DME I-FAT 111.3 Chan 50	APP CRS 291°	Rwy Idg TDZE Apt Elev	8915 333 336
--	------------------------	-----------------------------	---

ILS RWY 29R (CAT II)

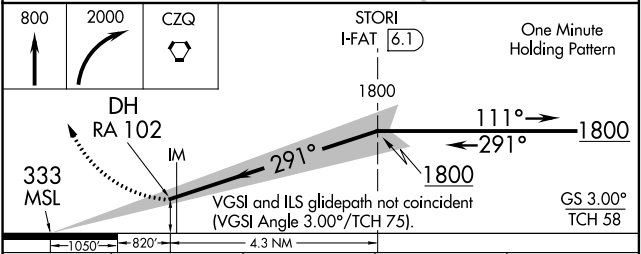
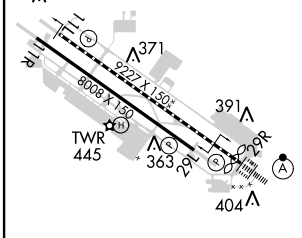
FRESNO YOSEMITE INTL (F'AT)

	ALSF-2 MISSED APPROACH: Climb to 800, then climbing right turn to 2000 direct CZQ VORTAC and hold. (TACAN aircraft climb to 3000 via CZQ VORTAC R-307 to OXVEV/CZQ 7 DME and hold NW, RT, 127° inbound.)			

ATIS 121.35 273.6	FRESNO APP CON 119.6 351.95	FRESNO TOWER 118.2 251.1	GND CON 121.7 348.6	CLNC DEL 124.35 348.6
-----------------------------	---------------------------------------	------------------------------------	-------------------------------	---------------------------------



ELEV 336	TDZE 333
----------	----------



CATEGORY	A	B	C	D
S-ILS 29R	RA 102/12		100 DA 433	

CATEGORY II ILS - SPECIAL AIRCREW & AIRCRAFT CERTIFICATION REQUIRED

SW-2, 07 FEB 2013 to 07 MAR 2013

SW-2, 07 FEB 2013 to 07 MAR 2013