

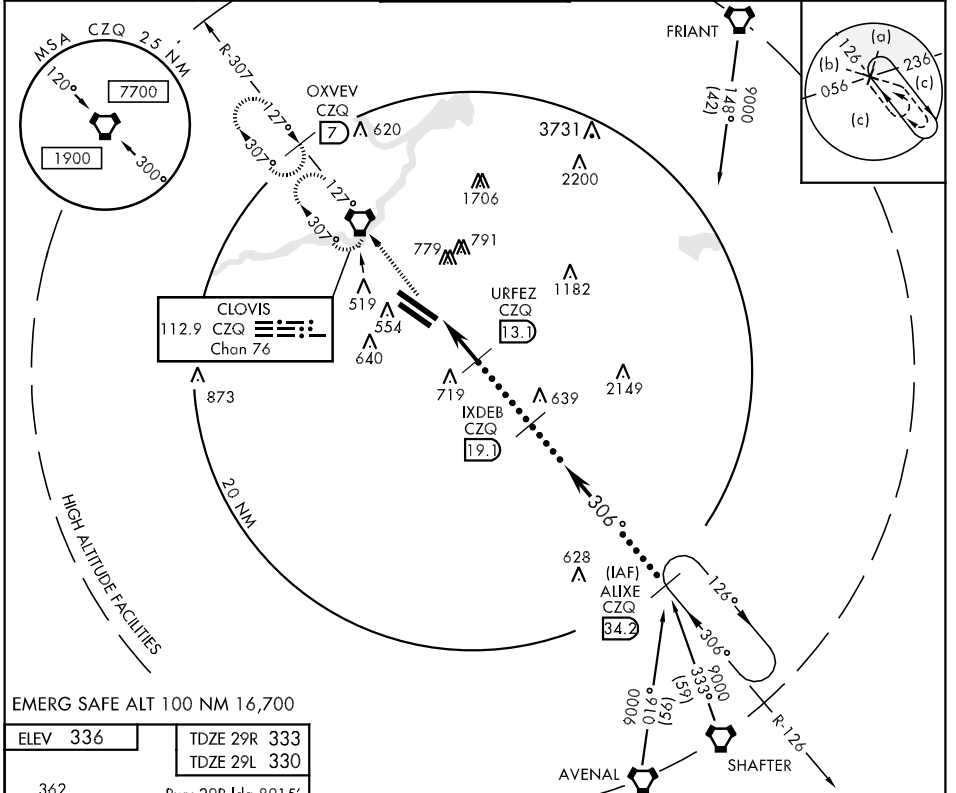
FRESNO, CALIFORNIA

# HI-VOR/DME or TACAN RWY 29R

VORTAC CZQ <b>112.9</b> Chan <b>76</b>	APCH CRS <b>306°</b>	Rwy Idg TDZE Arprt Elev	29R <b>8915</b> 29R <b>333</b> <b>336</b>	29L <b>8008</b> 29L <b>330</b>	JAL-162 [USAF] FRESNO YOSEMITE INTL (KFAT)
--	-------------------------	-------------------------------	---	-----------------------------------	--

**ALS-2**  
**MISSED APPROACH:** Climb to 2000 via CZQ VORTAC R-126 to CZQ VORTAC and hold. (TACAN acct continue climb to 3000 via CZQ R-307 to OXVEV 7 DME and hold NW, RT 127° inbound).

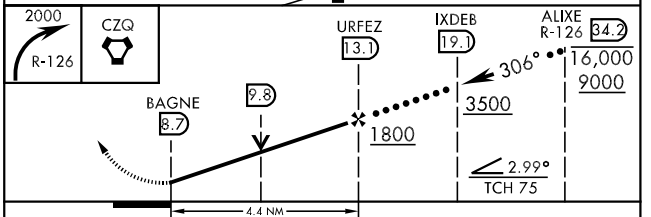
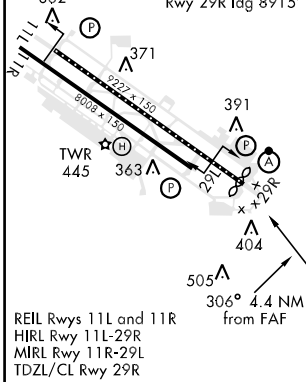
ATIS <b>121.35 273.6</b>	FRESNO APP CON <b>132.35 323.25</b>	FRESNO TOWER <b>118.2 251.1</b>	GND CON <b>121.7 348.6</b>	CLNC DEL <b>124.35 348.6</b>
-----------------------------	--	------------------------------------	-------------------------------	---------------------------------



EMERG SAFE ALT 100 NM 16,700

ELEV 336	TDZE 29R 333
	TDZE 29L 330

Rwy 29R Idg 8915'



CATEGORY	C	D	E
S-29R *	760/40 427 (500-34)	760/50	427 (500-1)
SIDESTEP 29L	760-1½ 430 (500-1½)	760-2	430 (500-2)
CIRCLING	820-1½ 484 (500-1½)	920-2 584 (600-2)	1140-2¾ 804 (900-2¾)

FRESNO, CALIFORNIA

36°47'N-119°43'W

FRESNO YOSEMITE INTL (KFAT)

Amtd 1 13010

# HI-VOR/DME or TACAN RWY 29R

SW-2, 07 FEB 2013 to 07 MAR 2013

SW-2, 07 FEB 2013 to 07 MAR 2013