

FRESNO, CALIFORNIA

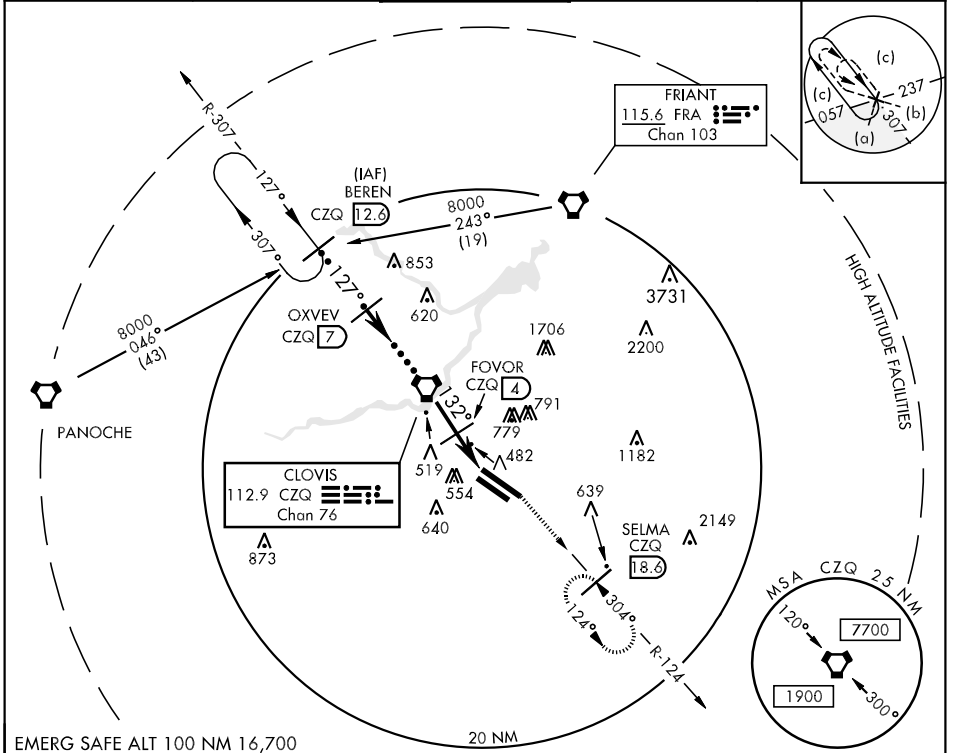
HI-VOR/DME or TACAN RWY 11L

VORTAC CZQ <b>112.9</b> Chan 76	APCH CRS <b>132°</b>	Rwy Idg TDZE Arprt Elev	11L <b>9227</b> 11L <b>336</b> <b>336</b>	11R <b>8008</b> 11R <b>333</b>
---------------------------------------	-------------------------	-------------------------------	---	-----------------------------------

JAL-162 [USAF] FRESNO YOSEMITE INTL (KFAT)

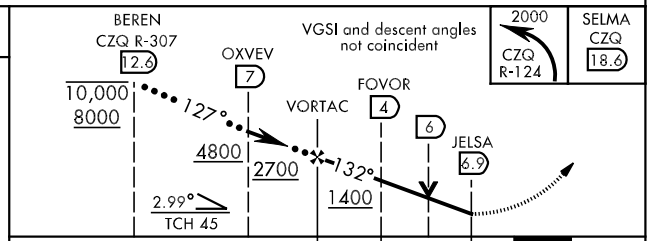
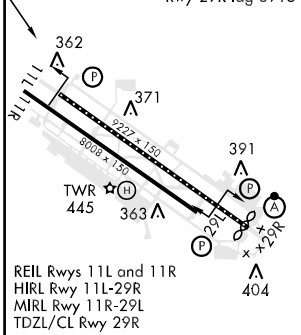
MISSED APPROACH: Climbing left turn to 2000 via CZQ R-124 to SELMA 18.6 DME and hold.

ATIS <b>121.35 273.6</b>	FRESNO APP CON <b>119.6 351.95</b>	FRESNO TOWER <b>118.2 251.1</b>	GND CON <b>121.7 348.6</b>	CLNC DEL <b>124.35 348.6</b>
-----------------------------	---------------------------------------	------------------------------------	-------------------------------	---------------------------------



EMERG SAFE ALT 100 NM 16,700

ELEV 336	TDZE 11L 336 TDZE 11R 333
----------	------------------------------



CATEGORY	C		D		E	
	800-1½	464 (500-1½)	800-1½	464 (500-1½)	800-1¾	464 (500-1¾)
S-11L	800-1½	464 (500-1½)	800-2	467 (500-2)	1140-2¾	804 (900-2¾)
SIDESTEP 11R	820-1½	484 (500-1½)	920-2	584 (600-2)		
CIRCLING						

FRESNO, CALIFORNIA

36°47'N-119°43'W

FRESNO YOSEMITE INTL (KFAT)

Amdt 1 13010

HI-VOR/DME or TACAN RWY 11L

SW-2, 07 FEB 2013 to 07 MAR 2013

SW-2, 07 FEB 2013 to 07 MAR 2013