

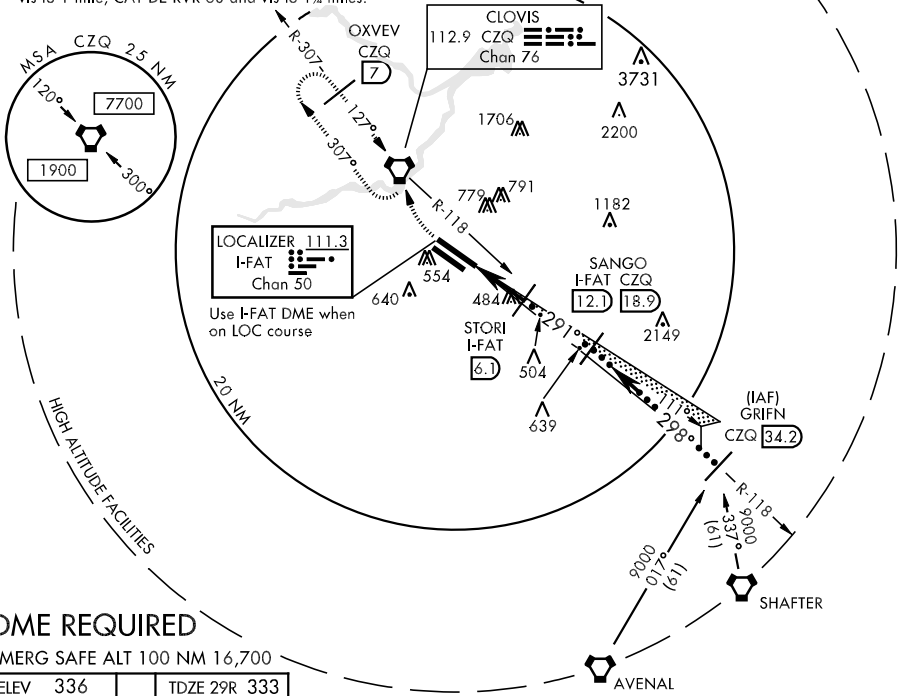
LOC/DME I-FAT 111.3 Chan 50	APCH CRS 291°	Rwy Idg 29R 8915 TDZE 29R 333 Arprt Elev 336	29L 8008 29L 330
--	-------------------------	---	-----------------------------------

JAL-162 [USAF] FRESNO YOSEMITE INTL (KFAT)

MISSED APPROACH: Climb to 800 then climbing right turn to 2000 direct CZQ VORTAC and hold. (TACAN aircraft continue climb to 3000 via CZQ R-307 to OXVEV/7 DME and hold northwest, right turns, 127° inbound), or as directed by ATIS.

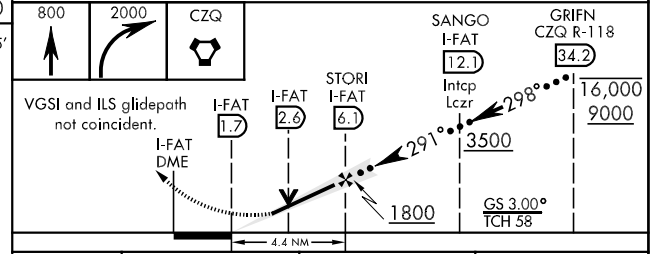
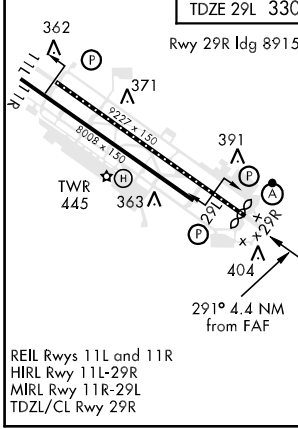
ATIS 121.35 273.6	FRESNO APP CON 132.35 323.25	FRESNO TOWER 118.2 251.1	GND CON 121.7 348.6	CLNC DEL 124.35 348.6
-----------------------------	--	------------------------------------	-------------------------------	---------------------------------

- * When ALS inop, increase CAT CDE RVR to 40 and vis to 3/4 mile.
- ** When ALS inop, increase CAT C RVR to 50 and vis to 1 mile, CAT DE RVR 60 and vis to 1 1/4 miles.



DME REQUIRED
EMERG SAFE ALT 100 NM 16,700

ELEV 336	TDZE 29R 333 TDZE 29L 330
----------	------------------------------



CATEGORY	C	D	E
S-ILS 29R*	533/18 200	(200-3/4)	533/24 200 (200-1/2)
S-LOC 29R**	680/24 347 (400-1/2)	680/40 347	(400-3/4)
SIDE STEP RWY 29L	740-1 1/2 410 (500-1 1/2)	740-2 410 (500-2)	740-2 3/4 410 (500-2 3/4)
CIRCLING	820-1 1/2 484 (500-1 1/2)	920-2 584 (600-2)	1140-2 3/4 804 (900-2 3/4)

SW-2, 07 FEB 2013 to 07 MAR 2013

SW-2, 07 FEB 2013 to 07 MAR 2013