

# GIVEN SIX ARRIVAL

ST-162 (FAA)

FRESNO YOSEMITE INTL (FAT)  
FRESNO, CALIFORNIA

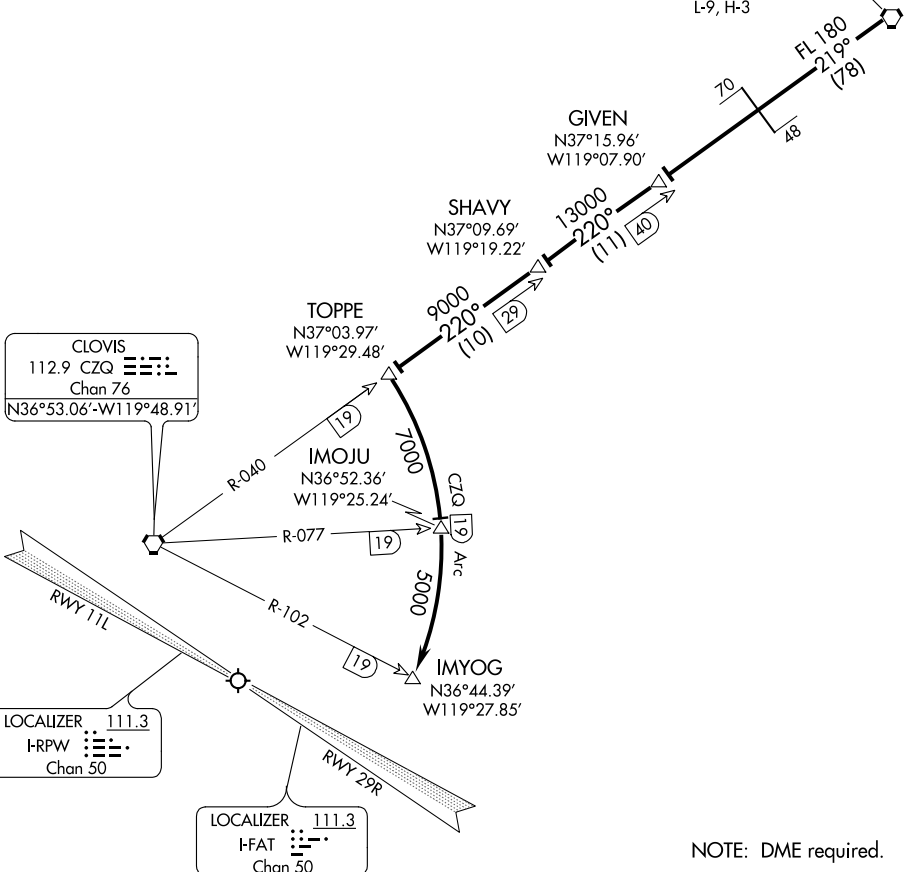
FRESNO APP CON  
119.6 351.95  
ATIS 121.35 273.6

COALDALE  
117.7 OAL  
Chan 124  
N38°00.20'-W117°46.23'  
L-9, H-3

CLOVIS  
112.9 CZQ  
Chan 76  
N36°53.06'-W119°48.91'

LOCALIZER 111.3  
I-RPW  
Chan 50

LOCALIZER 111.3  
I-FAT  
Chan 50



NOTE: DME required.

NOTE: Chart not to scale.

From over OAL VORTAC via OAL R-219 and CZQ R-040 to TOPPE DME fix, thence . . . .

. . . . RWY 11L: arrivals can expect RADAR vectors from TOPPE DME fix to Fresno Rwy 11L localizer.

. . . . RWY 29R: south via CZQ 19 DME arc to IMYOG R-102/19 DME, then via RADAR vectors to intercept the Fresno ILS Rwy 29R localizer course.

# GIVEN SIX ARRIVAL

SW-2, 07 FEB 2013 to 07 MAR 2013

SW-2, 07 FEB 2013 to 07 MAR 2013