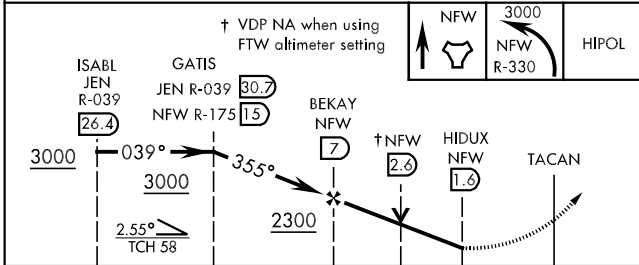
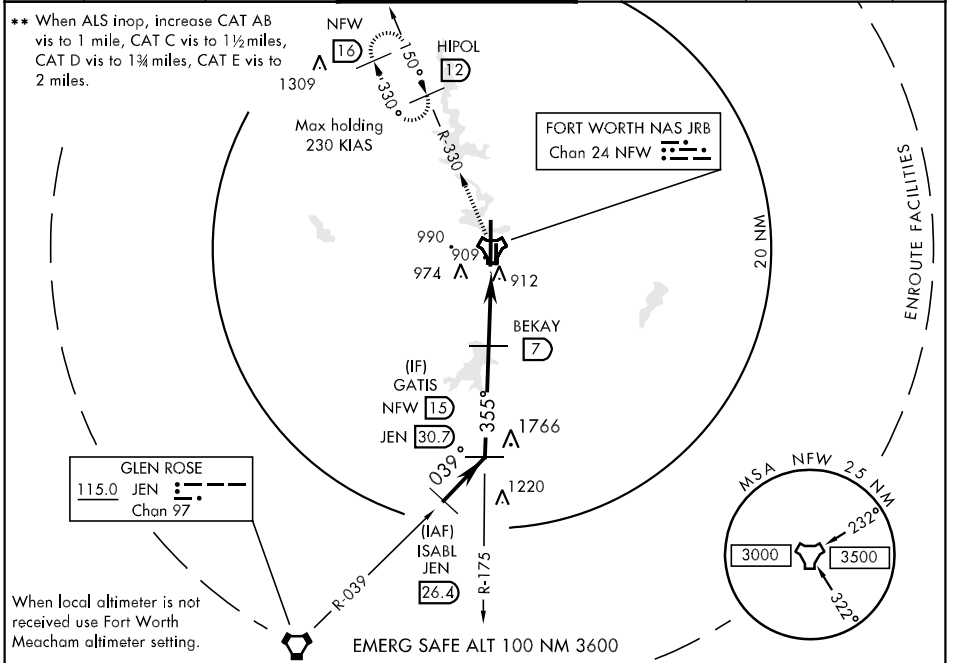


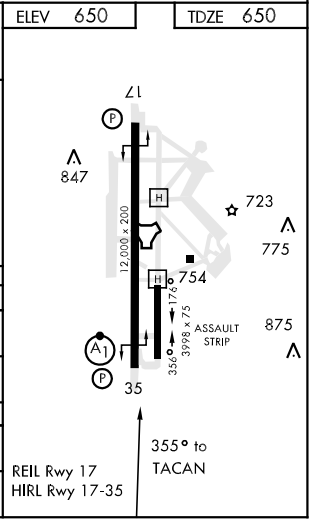
TACAN FWH Chan 24	APCH CRS 355°	Rwy ldg TDZE Arpt Elev 12,000 650 650	AL-160 [USN]	FORT WORTH NAS JRB (CARSWELL FLD) (KNFW)
-----------------------------	-------------------------	---	--------------	--

⚠ * When ALS inop, increase CAT AB vis to 1 mile, CAT C vis to 1½ miles, CAT DE vis to 1¾ miles.
*** Circling not authorized E of Rwy 17-35.

ATIS * 351.675	FORT WORTH MEACHAM INTL ATIS 120.7	REGIONAL APP CON 125.8 257.95	NAVY FORT WORTH TOWER * 120.95 269.325 284.725	NAVY FORT WORTH GND CON 121.675 279.575	CLNC DEL 126.4 254.325	ASR/PAR
--------------------------	--	---	--	---	----------------------------------	---------



CATEGORY	A	B	C	D	E
S-35 *	1180-½	530 (600-½)	1180-1 530 (600-1)	1180-1¼ 530 (600-1¼)	
CIRCLING ***	1220-1	570 (600-1)	1220-1½ 570 (600-1½)	1280-2 630 (700-2)	1300-2¼ 650 (700-2¼)
FORT WORTH MEACHAM ALTIMETER					
S-35 **	1200-½	550 (600-½)	1200-1 550 (600-1)	1200-1¼ 550 (600-1¼)	1200-1½ 550 (600-1½)
CIRCLING ***	1240-1	590 (600-1)	1240-1½ 590 (600-1½)	1300-2 650 (700-2)	1320-2¼ 670 (700-2¼)



SC-2, 07 FEB 2013 to 07 MAR 2013

SC-2, 07 FEB 2013 to 07 MAR 2013