

WAAS CH 71215 W17A	APCH CRS 174°	Rwy Idg 12,000 TDZE 636 Arpt Elev 650
--	-------------------------	--

AL-160 [USN]

FORT WORTH NAS JRB (CARSWELL FLD) (KNFW)

⚠ * Circling not authorized E of Rwy 17-35.
** Baro VNAV NA when local altimeter not received.

MISSED APPROACH: Climb to 2300, then climbing right turn to 3000 direct MOLKE and hold.

ATIS ★ 351.675	FORT WORTH MEACHAM INTL ATIS 120.7	REGIONAL APP CON 125.8 257.95	NAVY FORT WORTH TOWER ★ 120.95 269.325 284.725	NAVY FORT WORTH GND CON 121.675 279.575	CLNC DEL 126.4 254.325	ASR/PAR
--------------------------	--	---	--	---	----------------------------------	---------

CAUTION:

DAFIF USERS: When executing missed approach, climb to 2300 as soon as practical but no later than 6.4 NM from the point missed approach was executed from.

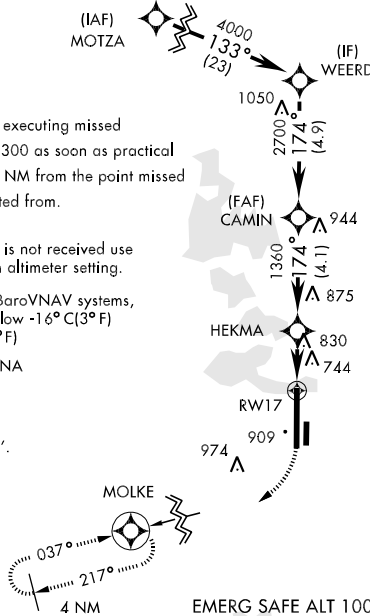
When local altimeter is not received use Fort Worth Meacham altimeter setting.

For uncompensated BaroVNAV systems, LNAV/VNAV NA below -16° C(3° F) or above 38° C(100° F)

DME/DME RNP-0.3 NA

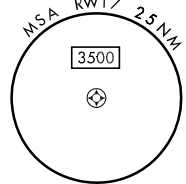
CAUTION:

LPV TCH exceeds 60'.

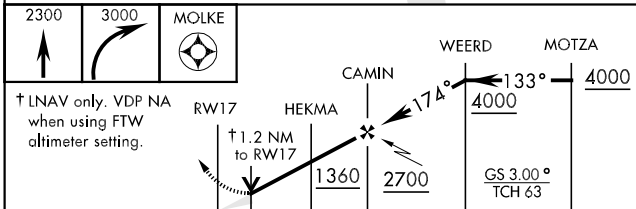


Max speed all segments 210 KIAS

▲ 1743



EMERG SAFE ALT 100 NM 3600

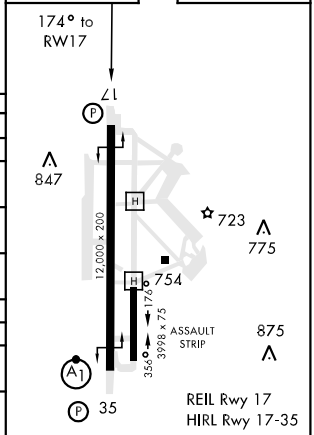


↑ 2300
↘ 3000
⊙ MOLKE

† LNAV only. VDP NA when using FTW altimeter setting.

ELEV 650	TDZE 636
----------	----------

CATEGORY	A	B	C	D
LPV DA	836-¾		200 (200-¾)	
LNAV/VNAV DA **	1040-1½		404 (500-1½)	
LNAV MDA	1080-1	444 (500-1)	1080-1¼ 444 (500-1¼)	1080-1½ 444 (500-1½)
CIRCLING *	1220-1½ 570 (600-1½)		1280-2 630 (700-2)	
FORT WORTH MEACHAM ALTIMETER				
LPV DA	856-¾	220 (300-¾)	856-1	220 (300-1)
LNAV MDA	1100-1	464 (500-1)	1100-1¼ 464 (500-1¼)	1100-1½ 464 (500-1½)
CIRCLING *	1240-1	590 (600-1)	1240-1½ 590 (600-1½)	1300-2 650 (700-2)



SC-2, 07 FEB 2013 to 07 MAR 2013

SC-2, 07 FEB 2013 to 07 MAR 2013