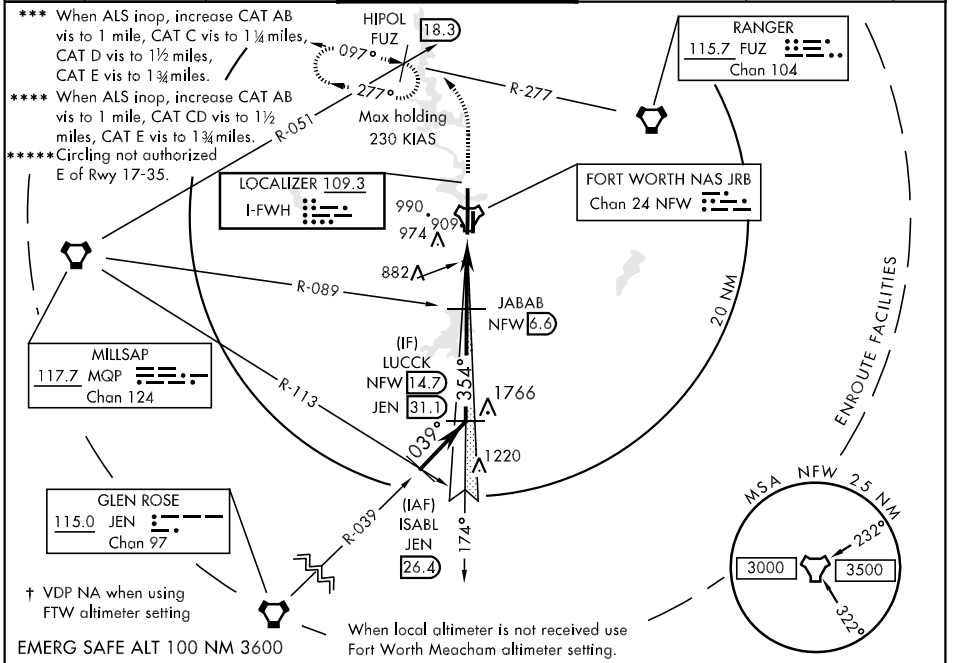


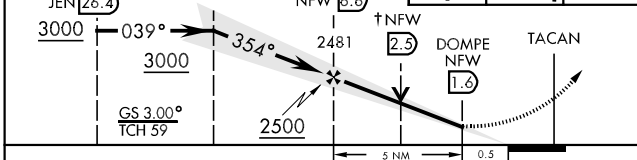
LOC I-FWH <b>109.3</b>	APCH CRS <b>354°</b>	Rwy Idg <b>12,000</b> TDZE <b>650</b> Arpt Elev <b>650</b>	AL-160 [USN]	FORT WORTH NAS JRB (CARSWELL FLD) (KNFW)
---------------------------	-------------------------	--	--------------	--

A1
ALS-F-1
MISSED APPROACH: Climb to 2000, then climbing left turn to 3000 via heading 330° and FUZ VORTAC R-277 to HIPOL and hold.

ATIS ★ <b>351.675</b>	FORT WORTH MEACHAM INTL ATIS <b>120.7</b>	REGIONAL APP CON <b>125.8 257.95</b>	NAVY FORT WORTH TOWER ★ <b>120.95 269.325 284.725</b>	NAVY FORT WORTH GND CON <b>121.675 279.575</b>	CLNC DEL <b>126.4 254.325</b>	ASR/PAR
--------------------------	--	---	--	---	----------------------------------	---------

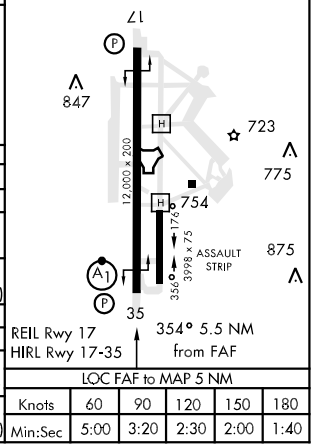


ISABL MQP R-113 JEN R-039 JEN <b>26.4</b>	LUCK JEN R-039 NFW <b>14.7</b>	JABAB MQP R-089 NFW <b>6.6</b>	2000	3000	HIPOL
--	--------------------------------------	--------------------------------------	------	------	-------



ELEV 650	TDZE 650
----------	----------

CATEGORY	A	B	C	D	E
S-ILS 35 *	850-1/2		200	(200-1/2)	
S-LOC 35 **	1140-1/2	490 (500-1/2)	1140-3/4	1140-1	1140-1 1/4
CIRCLING *****	1220-1	570 (600-1)	1220-1 1/2	1280-2	1300-2 1/4
FORT WORTH MEACHAM ALTIMETER					
S-ILS 35 **	870-1/2		220	(300-1/2)	
S-LOC 35 *****	1160-1/2	510 (600-1/2)	1160-1	510 (600-1)	1160-1 1/4
CIRCLING *****	1240-1	590 (600-1)	1240-1 1/2	1300-2	1320-2 1/4



SC-2, 07 FEB 2013 to 07 MAR 2013

SC-2, 07 FEB 2013 to 07 MAR 2013