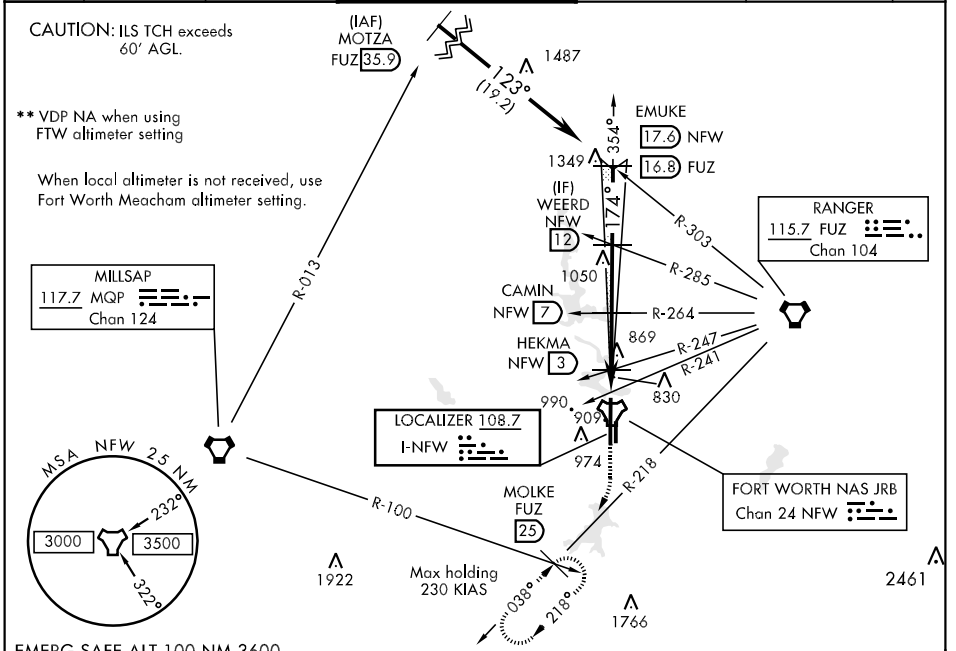


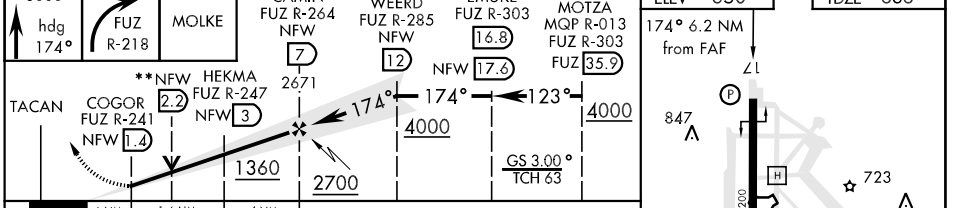
LOC I-NFW <b>108.7</b>	APCH CRS <b>174°</b>	Rwy Idg TDZE Arpt Elev <b>12,000</b> <b>636</b> <b>650</b>	AL-160 [USN]	FORT WORTH NAS JRB (CARSWELL FLD) (KNFW)
---------------------------	-------------------------	---	--------------	--

▼ \*Circling not authorized E of Rwy 17-35.
 MISSED APPROACH: Climb to 3000 via heading 174° and FUZ VORTAC R-218 to MOLKE and hold.

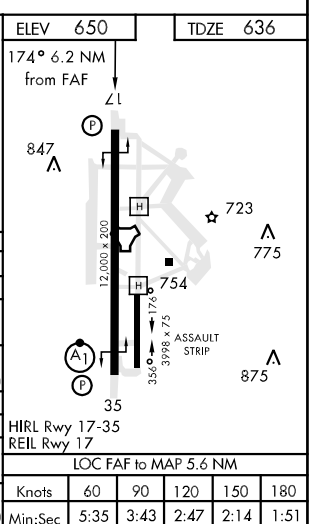
ATIS ★ <b>351.675</b>	FORT WORTH MEACHAM INTL ATIS <b>120.7</b>	REGIONAL APP CON <b>125.8 257.95</b>	NAVY FORT WORTH TOWER ★ <b>120.95 269.325 284.725</b>	NAVY FORT WORTH GND CON <b>121.675 279.575</b>	CLNC DEL <b>126.4 254.325</b>	ASR/PAR
--------------------------	--	---	--	---	----------------------------------	---------



EMERG SAFE ALT 100 NM 3600



CATEGORY	A	B	C	D	E
S-ILS 17	836-3/4		200	(200-3/4)	
S-LOC 17	1080-1	444 (500-1)	1080-1 1/4 444 (500-1 1/4)	1080-1 1/2	444 (500-1 1/2)
CIRCLING *	1220-1	570 (600-1)	1220-1 1/2 570 (600-1 1/2)	1280-2 630 (700-2)	1300-2 1/4 650 (700-2 1/4)
FORT WORTH MEACHAM ALTIMETER					
S-ILS 17	856-3/4	220 (300-3/4)	856-1	220	(300-1)
S-LOC 17	1100-1	464 (500-1)	1100-1 1/4 464 (500-1 1/4)	1100-1 1/2 464 (500-1 1/2)	1100-1 3/4 464 (500-1 3/4)
CIRCLING *	1240-1	590 (600-1)	1240-1 1/2 590 (600-1 1/2)	1300-2 650 (700-2)	1320-2 1/4 670 (700-2 1/4)



SC-2, 07 FEB 2013 to 07 MAR 2013

SC-2, 07 FEB 2013 to 07 MAR 2013