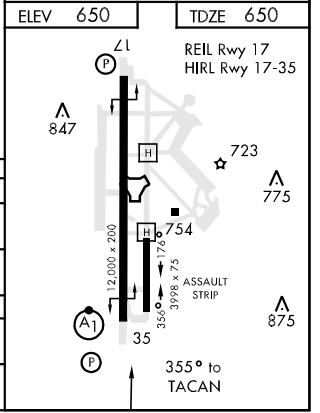
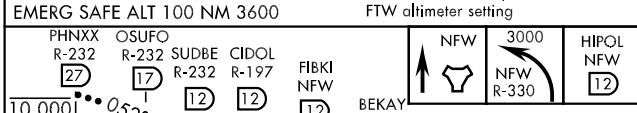
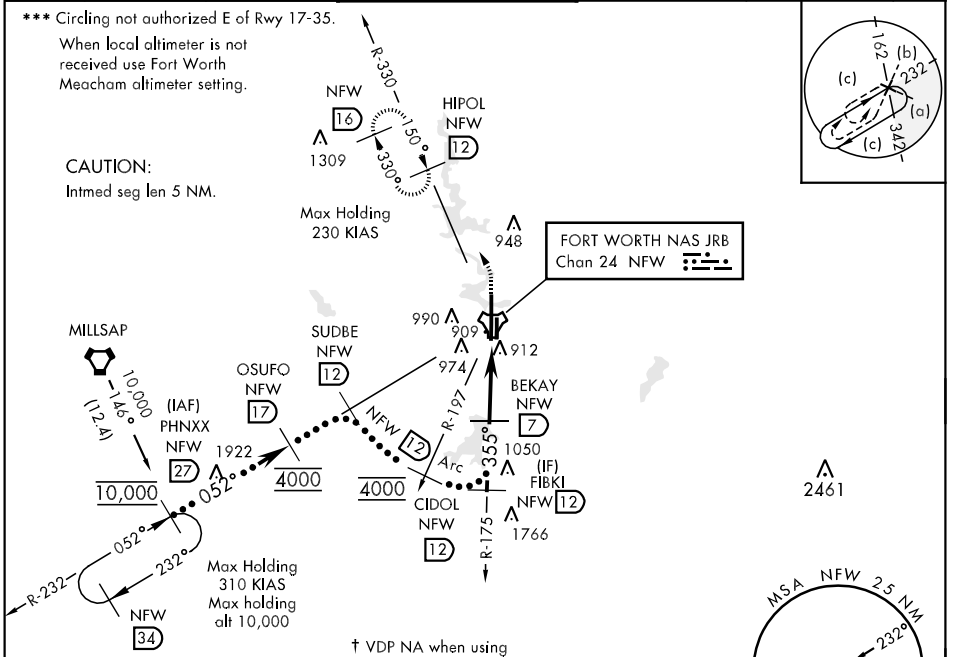


TACAN NFW Chan 24	APCH CRS 355°	Rwy Idg 12,000 TDZE 650 Arpt Elev 650	JAL-160 [USN]	FORT WORTH NAS JRB (CARSWELL FLD) (KNFW)
----------------------	------------------	---	---------------	--

V * When ALS inop, increase CAT C vis to 1½ miles, CAT DE to 1¾ miles.
 ** When ALS inop, increase CAT C vis to 1½ miles, CAT D vis to 1¾ miles, CAT E to 2 miles.

ATIS * 351.675	FORT WORTH MEACHAM INTL ATIS 120.7	REGIONAL APP CON 125.8 257.95	NAVY FORT WORTH TOWER * 120.95 269.325 284.725	NAVY FORT WORTH GND CON 121.675 279.575	CLNC DEL 126.4 254.325	ASR/PAR
-------------------	---------------------------------------	----------------------------------	---	--	---------------------------	---------



CATEGORY	C	D	E
S-35 *	1180-1 530 (600-1)	1180-1¼ 530 (700-2)	1300-2½ 650 (700-2¼)
CIRCLING ***	1220-1½ 570 (600-1½)	1280-2 630 (700-2)	1300-2½ 650 (700-2¼)
FORT WORTH MEACHAM ALTIMETER			
S-35 **	1200-1 550 (600-1)	1200-1¼ 550 (600-1¼)	1200-1½ 550 (600-1½)
CIRCLING ***	1240-1½ 590 (600-1½)	1300-2 650 (700-2)	1320-2½ 670 (700-2¼)

SC-2, 07 FEB 2013 to 07 MAR 2013

SC-2, 07 FEB 2013 to 07 MAR 2013