

TACAN NFW Chan 24	APCH CRS 172°	Rwy Idg 12,000 TDZE 636 Arpt Elev 650
-----------------------------	-------------------------	--

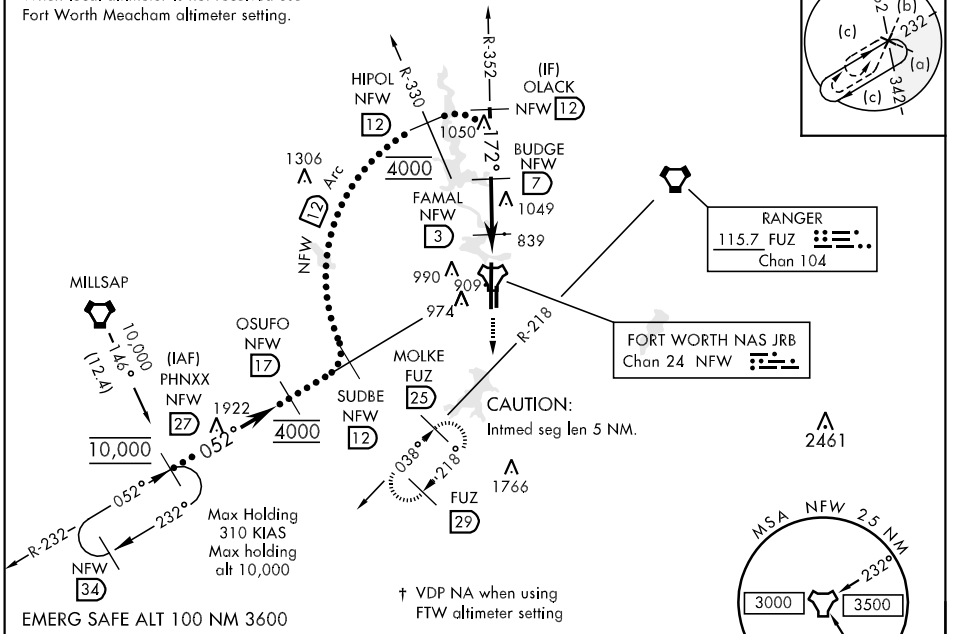
JAL-160 [USN] FORT WORTH NAS JRB (CARSWELL FLD) (KNFW)

* Circling not authorized E of Rwy 17-35.

MISSED APPROACH: Climb to 3000 via heading 174° and FUZ VORTAC R-218 to MOLKE and hold.

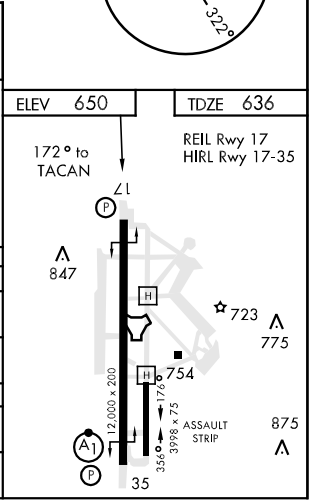
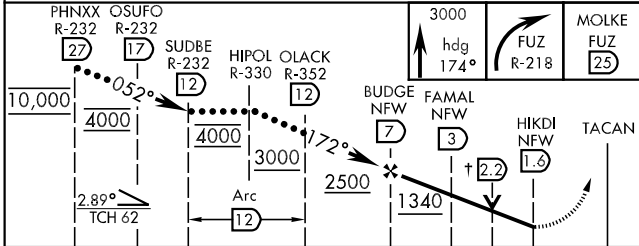
ATIS ★ 351.675	FORT WORTH MEACHAM INTL ATIS 120.7	REGIONAL APP CON 125.8 257.95	NAVY FORT WORTH TOWER ★ 120.95 269.325 284.725	NAVY FORT WORTH GND CON 121.675 279.575	CLNC DEL 126.4 254.325	ASR/PAR
--------------------------	--	---	--	---	----------------------------------	---------

When local altimeter is not received use Fort Worth Meacham altimeter setting.



SC-2, 07 FEB 2013 to 07 MAR 2013

SC-2, 07 FEB 2013 to 07 MAR 2013



CATEGORY	C	D	E
S-17	1100-1¼ 464 (500-1¼)	1100-1½ 464 (500-1½)	1100-1¾ 464 (500-1¾)
CIRCLING *	1220-1 ½ 570 (600-1½)	1280-2 630 (700-2)	1300-2 ¼ 650 (700-2¼)
FORT WORTH MEACHAM ALTIMETER			
S-17	1120-1¼ 484 (500-1¼)	1120-1½ 484 (500-1½)	1120-1¾ 484 (500-1¾)
CIRCLING *	1240-1 ½ 590 (600-1½)	1300-2 650 (700-2)	1320-2 ¼ 670 (700-2¼)

FORT WORTH, TEXAS 32°46'N-97°26'W FORT WORTH NAS JRB (CARSWELL FLD) (KNFW)

Amtd 2 12320