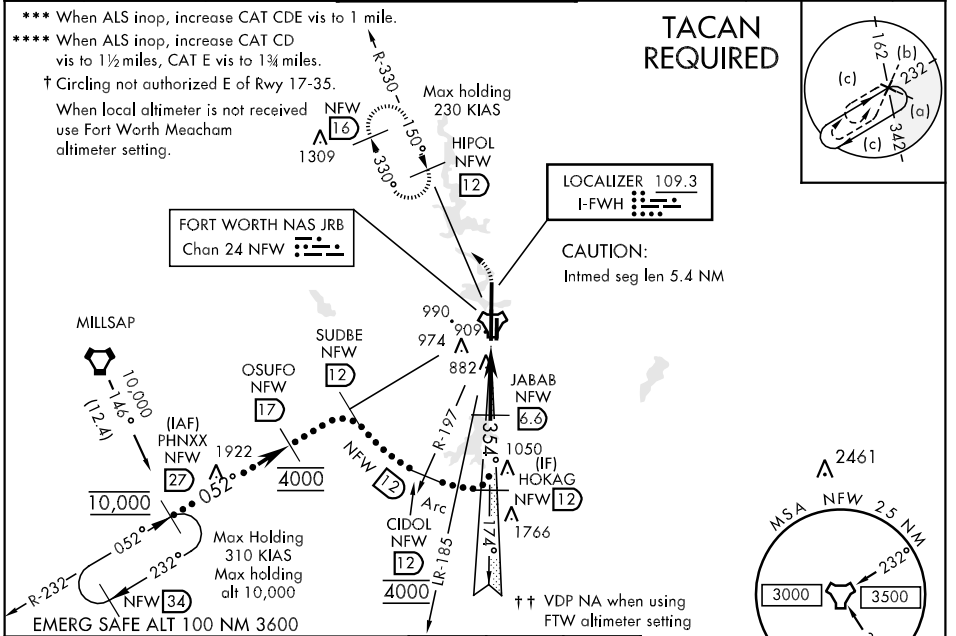


LOC I-FWH 109.3	APCH CRS 354°	Rwy Idg 12,000 TDZE 650 Arpt Elev 650	JAL-160 [USN]	FORT WORTH NAS JRB (CARSWELL FLD) (KNFW)
---------------------------	-------------------------	--	---------------	--

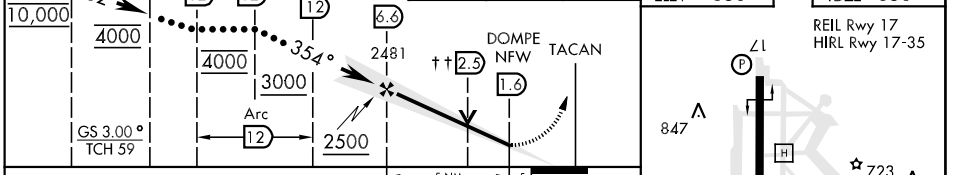
▽ * When ALS inop, increase CAT CDE vis to 3/4 mile.
****** When ALS inop, increase CAT C vis to 1 1/4 miles, CAT D vis to 1 1/2 miles, CAT E vis to 1 3/4 miles.

ALS-F-1 MISSED APPROACH: Climb to 1300, then climbing left turn to 3000 via NFW TACAN R-330 to HIPOL and hold.

ATIS ★ 351.675	FORT WORTH MEACHAM INTL ATIS 120.7	REGIONAL APP CON 125.8 257.95	NAVY FORT WORTH TOWER ★ 120.95 269.325 284.725	NAVY FORT WORTH GND CON 121.675 279.575	CLNC DEL 126.4 254.325	ASR/PAR
--------------------------	--	---	--	---	----------------------------------	---------



PHNXX R-232 (27)	OSUFO R-232 (17)	SUDBE R-232 (12)	CIDOL R-197 (12)	HOKAG NFW (12)	JABAB NFW (6.6)	DOMPE NFW (2.3)	TACAN	HIPOL NFW (12)
------------------	------------------	------------------	------------------	----------------	-----------------	-----------------	-------	----------------



CATEGORY	C	D	E
S-ILS 35*	850-1/2	200	(200-1/2)
S-LOC 35**	1140-3/4 490 (500-3/4)	1140-1 490 (500-1)	1140-1 1/4 490 (500-1 1/4)
CIRCLING †	1220-1 1/2 570 (600-1 1/2)	1280-2 630 (700-2)	1300-2 1/4 650 (700-2 1/4)
FORT WORTH MEACHAM ALTIMETER			
S-ILS 35***	870-1/2	220	(300-1/2)
S-LOC 35	1160-1 510 (600-1)		1160-1 1/4 510 (600-1 1/4)
CIRCLING †	1240-1 1/2 590 (600-1 1/2)	1300-2 650 (700-2)	1320-2 1/4 670 (700-2 1/4)

ELEV 650 | TDZE 650

REIL Rwy 17
HIRL Rwy 17-35

FAF to MAP 5 NM					
Knots	120	140	160	180	200
Min:Sec	2:30	2:09	1:52	1:40	1:30

SC-2, 07 FEB 2013 to 07 MAR 2013

SC-2, 07 FEB 2013 to 07 MAR 2013