

DALLAS NINE DEPARTURE

SL-160 (FAA)

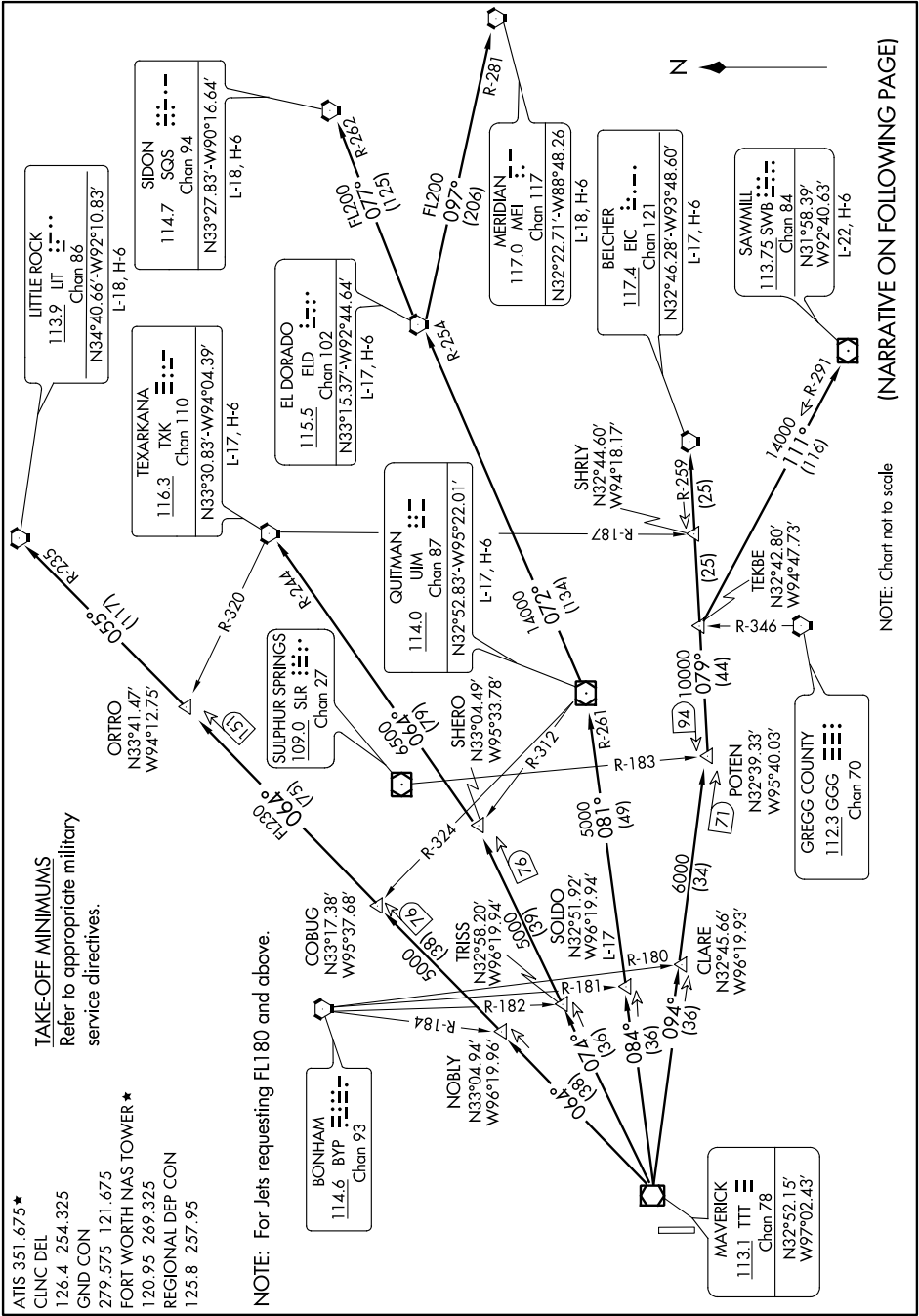
DALLAS, TEXAS

SC-2, 07 FEB 2013 to 07 MAR 2013

ATIS 351.675★
 CLINC DEL 126.4 254.325
 GND CON 279.575 121.675
 FORT WORTH NAS TOWER ★ 120.95 269.325
 REGIONAL DEP CON 125.8 257.95

TAKE-OFF MINIMUMS
 Refer to appropriate military service directives.

NOTE: For Jets requesting FL180 and above.



(NARRATIVE ON FOLLOWING PAGE)

NOTE: Chart not to scale

SC-2, 07 FEB 2013 to 07 MAR 2013