

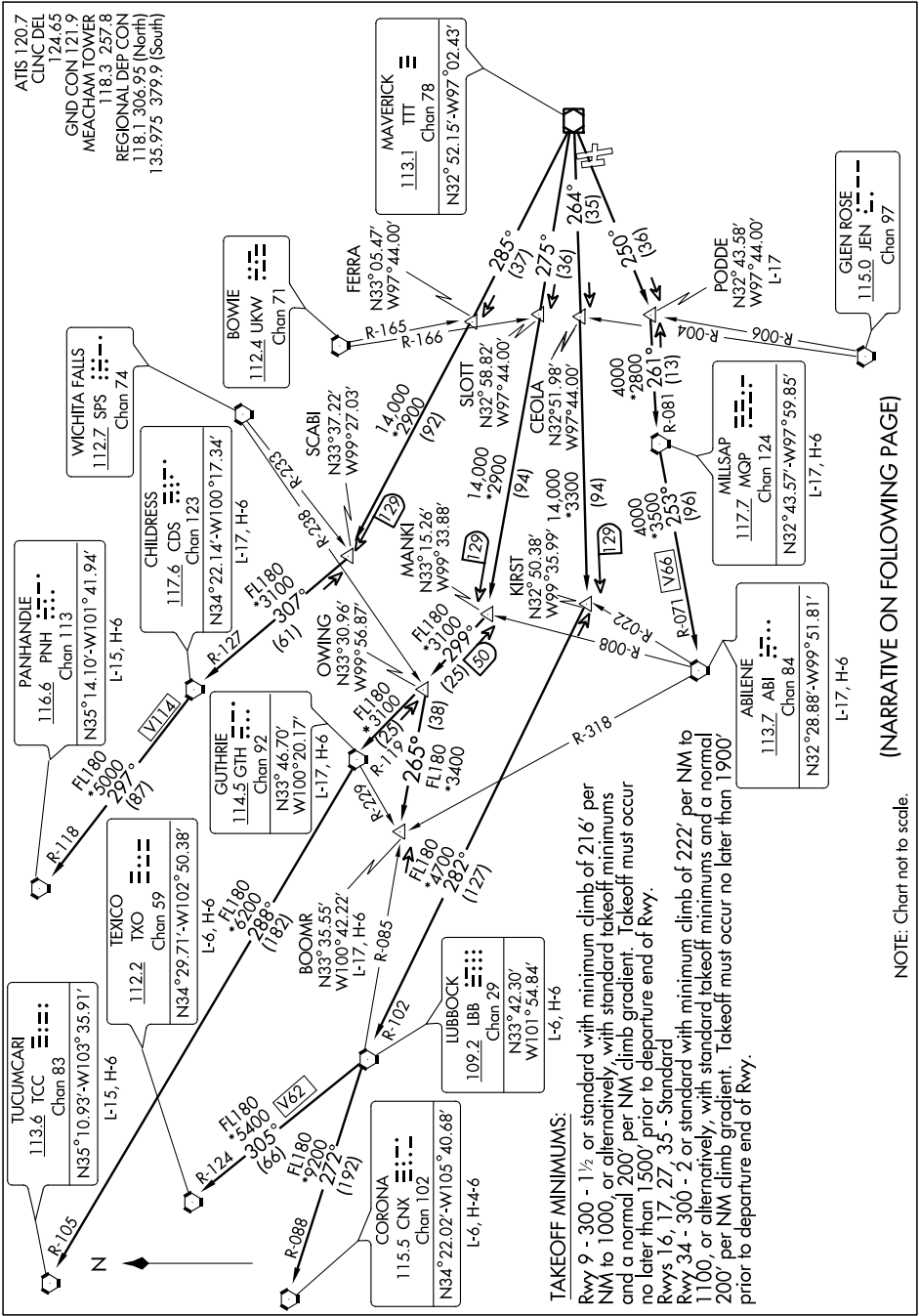
# WORTH SIX DEPARTURE

SL-159 (FAA)

FORT WORTH MEACHAM INTL (F'TW)

FORT WORTH, TEXAS

SC-2, 07 FEB 2013 to 07 MAR 2013



### TAKEOFF MINIMUMS:

Rwy 9 - 300 - 1/2 or standard with minimum climb of 216' per NM to 1000, or alternatively, with standard takeoff minimums and a normal 200' per NM climb gradient. Takeoff must occur no later than 1500' prior to departure end of Rwy.

Rwys 16, 17, 27, 35 - Standard

Rwy 34 - 300 - 2 or standard with minimum climb of 222' per NM to 1100, or alternatively, with standard takeoff minimums and a normal 200' per NM climb gradient. Takeoff must occur no later than 1900' prior to departure end of Rwy.

(NARRATIVE ON FOLLOWING PAGE)

NOTE: Chart not to scale.

SC-2, 07 FEB 2013 to 07 MAR 2013