

# JOE POOL FOUR DEPARTURE

SL-159 (FAA)

FORT WORTH, TEXAS

ATIS 120.7  
 CLNC DEL  
 124.65  
 GND CON 121.9  
 MEACHAM TOWER  
 118.3 257.8  
 REGIONAL DEP CON  
 118.1 306.95 (NORTH)  
 135.975 379.9 (SOUTH)

**MAVERICK**  
 113.1 TTT  
 Chan 78  
 N32°52.15'-W97°02.43'

### TAKE-OFF MINIMUMS:

All runways standard.

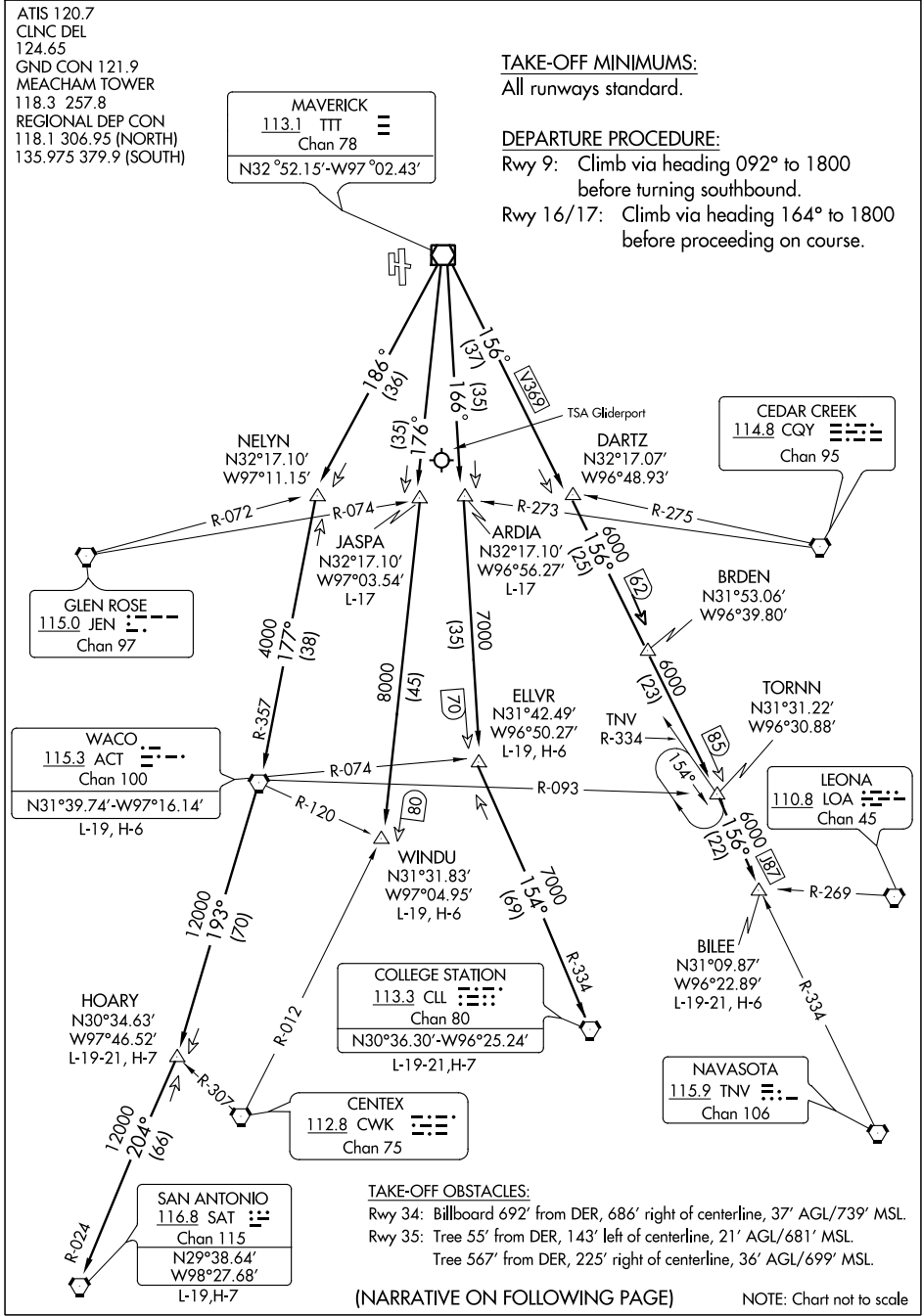
### DEPARTURE PROCEDURE:

Rwy 9: Climb via heading 092° to 1800 before turning southbound.

Rwy 16/17: Climb via heading 164° to 1800 before proceeding on course.

SC-2, 07 FEB 2013 to 07 MAR 2013

SC-2, 07 FEB 2013 to 07 MAR 2013



### TAKE-OFF OBSTACLES:

Rwy 34: Billboard 692' from DER, 686' right of centerline, 37' AGL/739' MSL.  
 Rwy 35: Tree 55' from DER, 143' left of centerline, 21' AGL/681' MSL.  
 Tree 567' from DER, 225' right of centerline, 36' AGL/699' MSL.

(NARRATIVE ON FOLLOWING PAGE)

NOTE: Chart not to scale

# JOE POOL FOUR DEPARTURE

FORT WORTH, TEXAS