

FORT WORTH, TEXAS

AL-159 (FAA)

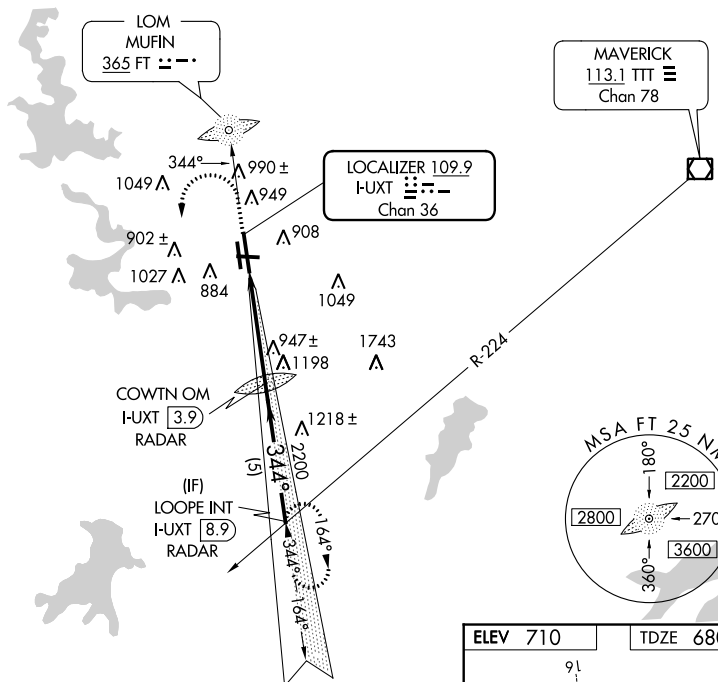
LOC I-UXT 109.9 Chan 36	APP CRS 344°	Rwy Idg TDZE Apt Elev	7501 680 710
---	------------------------	-----------------------------	---

ILS or LOC RWY 34

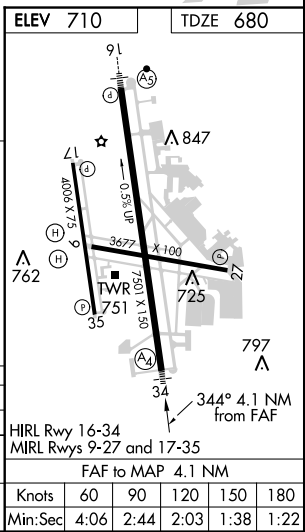
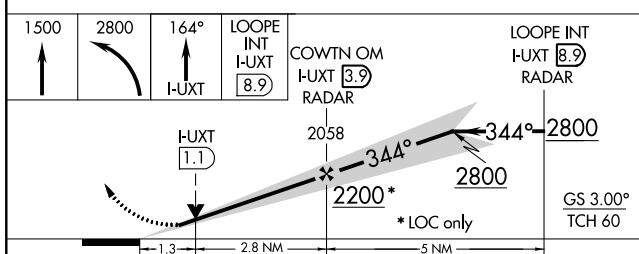
FORT WORTH MEACHAM INTL (FTW)

Inoperative table does not apply to S-LOC 34 Cat C.	MALS 	MISSED APPROACH : Climb to 1500, then climbing left turn to 2800 via I-UXT south course to LOOPE Int/ I-UXT 8.9 DME and hold.

ATIS 120.7	REGIONAL APP CON (North) 118.1 306.95 (South) 135.975 379.9	MEACHAM TOWER 118.3 257.8	GND CON 121.9	CLNC DEL 124.65
----------------------	---	-------------------------------------	-------------------------	---------------------------



RADAR REQUIRED



CATEGORY	A	B	C	D
S- ILS 34	880- $\frac{3}{4}$ 200 (200- $\frac{3}{4}$)			
S-LOC 34	1200- $\frac{3}{4}$ 520 (500- $\frac{3}{4}$)	1200-1 $\frac{1}{2}$ 520 (500-1 $\frac{1}{2}$)	1200-1 $\frac{3}{4}$ 520 (500-1 $\frac{3}{4}$)	
CIRCLING	1260-1 550 (600-1)	1280-1 $\frac{1}{2}$ 570 (600-1 $\frac{1}{2}$)	1300-2 590 (600-2)	

FORT WORTH, TEXAS
Amdt 2 12040

32°49'N-97°22' W

FORT WORTH MEACHAM INTL (FTW)

ILS or LOC RWY 34

SC-2, 07 FEB 2013 to 07 MAR 2013

SC-2, 07 FEB 2013 to 07 MAR 2013