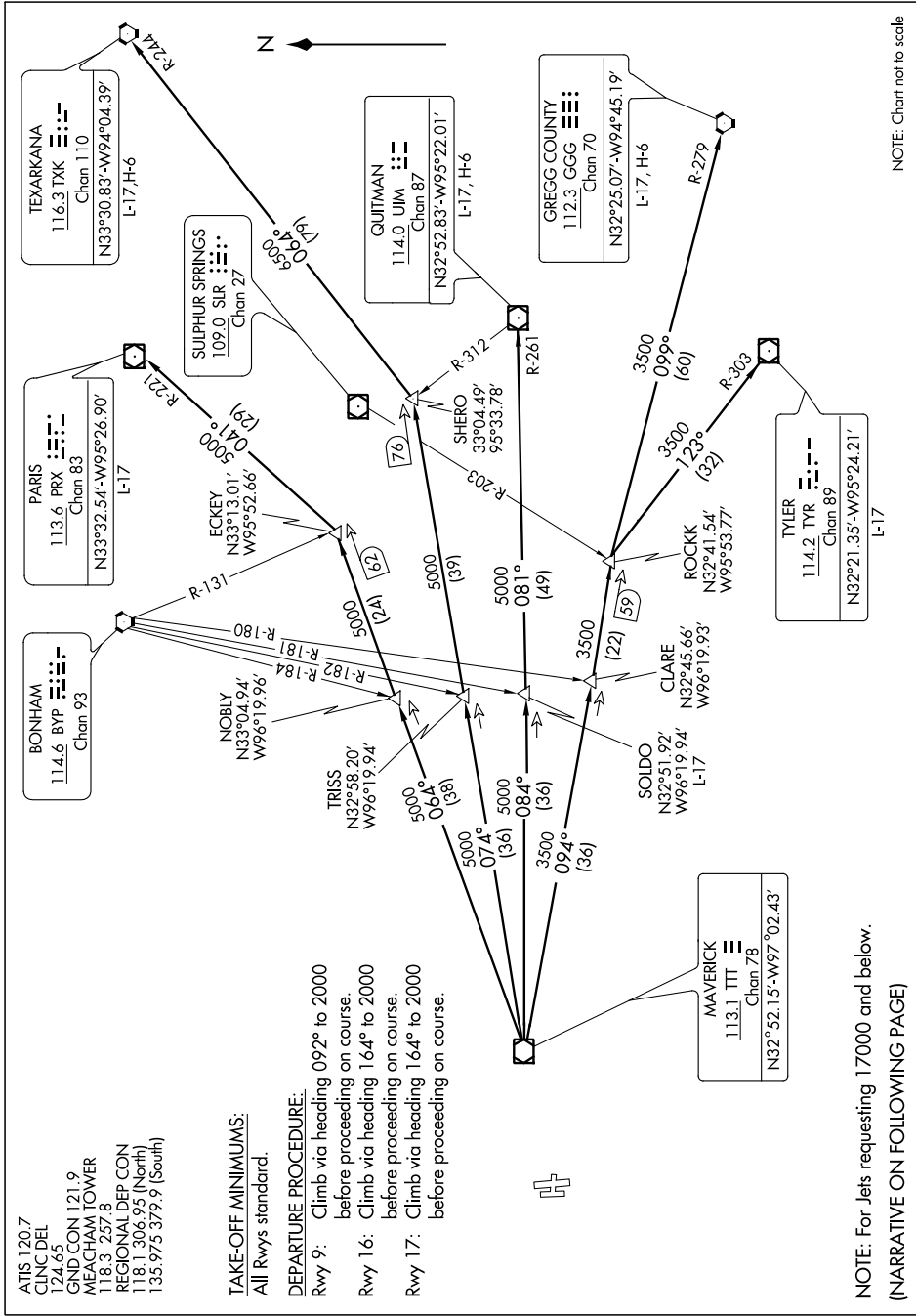


SC-2, 07 FEB 2013 to 07 MAR 2013



NOTE: Chart not to scale

SC-2, 07 FEB 2013 to 07 MAR 2013

ATIS 120.7
 CINC DEL 124.65
 GND CON 121.9
 MEACHAM TOWER 118.3 257.8
 REGIONAL DEP CON 118.1 306.95 (North)
 135.975 379.9 (South)

TAKE-OFF MINIMUMS:
 All Rwys standard.

DEPARTURE PROCEDURE:
 Rwy 9: Climb via heading 092° to 2000 before proceeding on course.
 Rwy 16: Climb via heading 164° to 2000 before proceeding on course.
 Rwy 17: Climb via heading 164° to 2000 before proceeding on course.

NOTE: For Jets requesting 17000 and below.
 (NARRATIVE ON FOLLOWING PAGE)