

DALLAS NINE DEPARTURE

SL-159 (FAA)

DALLAS, TEXAS

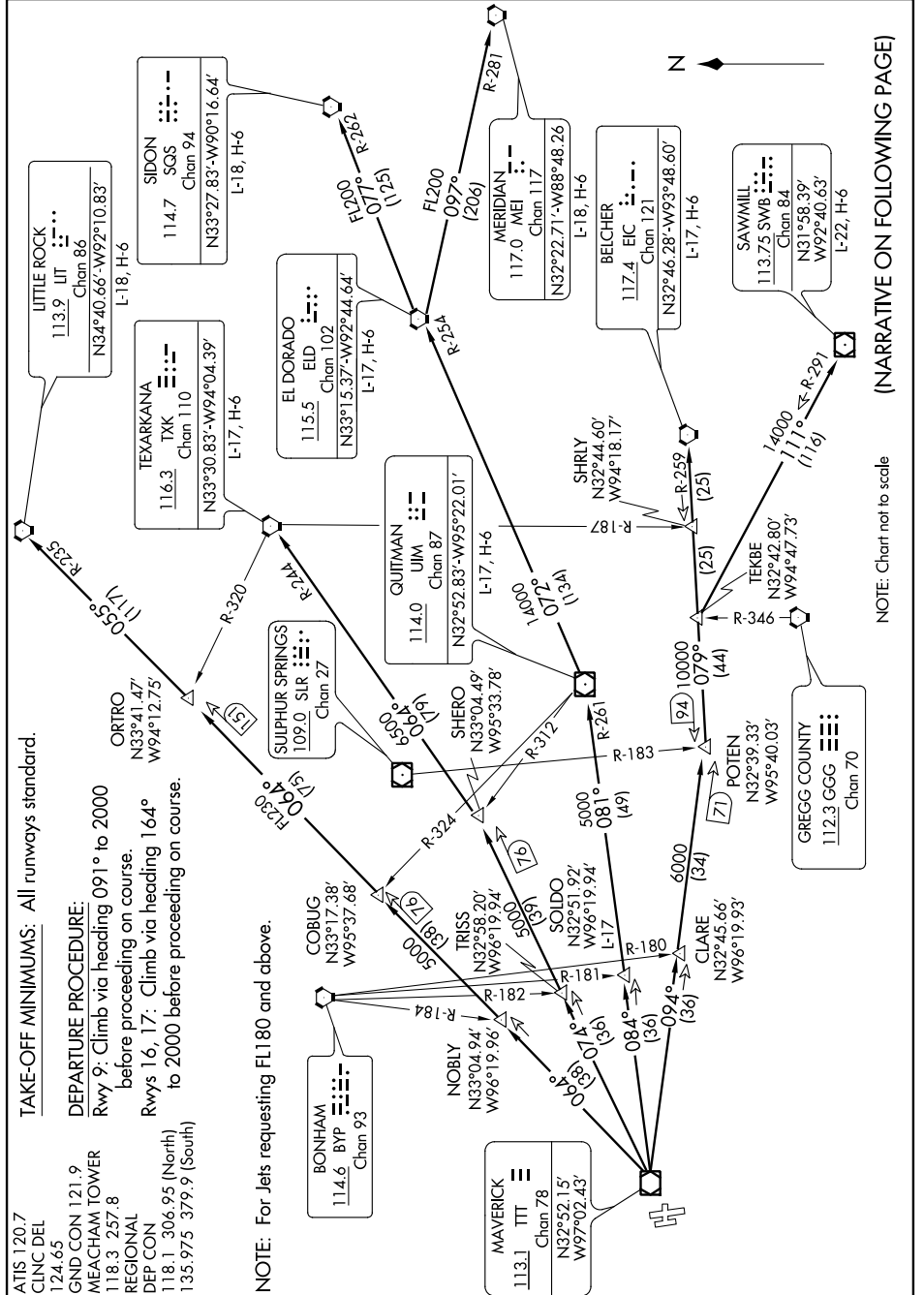
SC-2, 07 FEB 2013 to 07 MAR 2013

TAKE-OFF MINIMUMS: All runways standard.

DEPARTURE PROCEDURE:
Rwy 9: Climb via heading 091° to 2000 before proceeding on course.
Rwys 16, 17: Climb via heading 164° to 2000 before proceeding on course.

ATIS 120.7
CLNC DEL 124.65
GND CON 121.9
MEACHAM TOWER 118.3 257.8
REGIONAL DEP CON 118.1 306.95 (North)
135.975 379.9 (South)

NOTE: For Jets requesting FL180 and above.



NOTE: Chart not to scale

(NARRATIVE ON FOLLOWING PAGE)

DALLAS NINE DEPARTURE