

VOR OLK <b>110.4</b>	APP CRS <b>114°</b>	Rwy Idg 2623
		TDZE 836
		Apt Elev 836

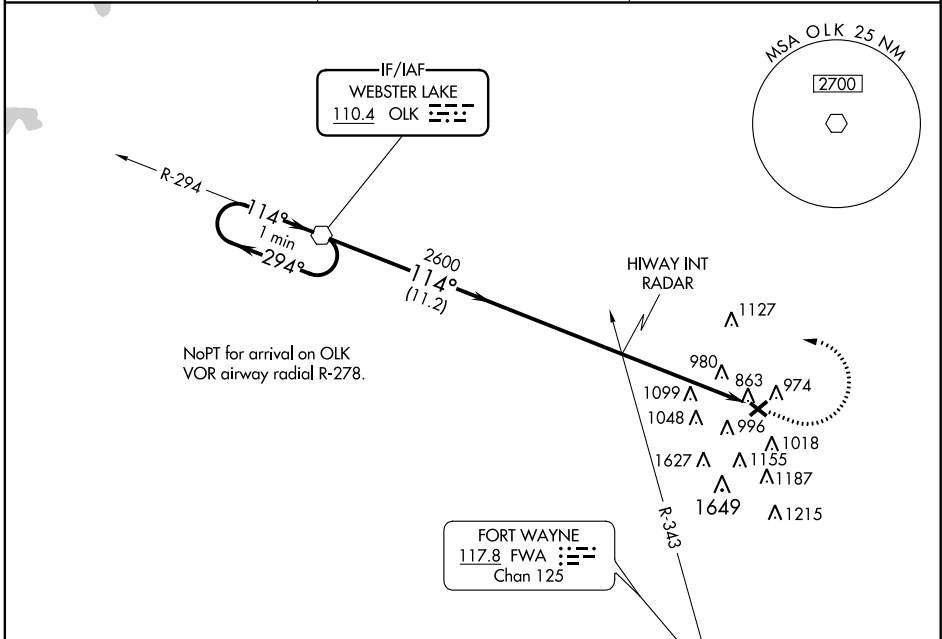
# VOR RWY 13

FORT WAYNE/ SMITH FIELD (SMD)

**▼** Visibility reduction by helicopters NA. When local altimeter setting not received, use Fort Wayne Intl altimeter setting and increase all MDA 40 feet and Circling Cat C visibility ¼ mile.

**▲** MISSED APPROACH: Climb to 1900 then climbing left turn to 2700 direct OLK VOR and hold.

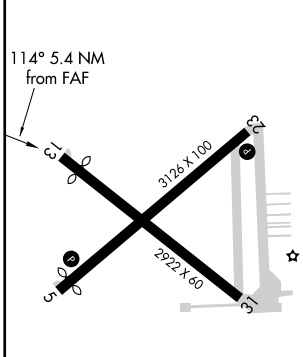
AWOS-3 <b>124.55</b>	FORT WAYNE APP CON <b>127.2 284.6</b>	UNICOM <b>122.8 (CTAF) 0</b>
-------------------------	--	---------------------------------



EC-2, 07 FEB 2013 to 07 MAR 2013

EC-2, 07 FEB 2013 to 07 MAR 2013

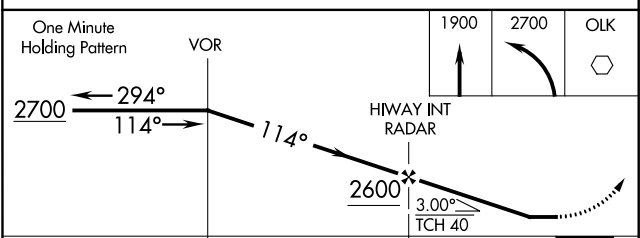
ELEV 836	TDZE 836
----------	----------



MIRL Rws 5-23 and 13-31 0

FAF to MAP 5.4 NM

Knots	60	90	120	150	180
Min:Sec	5:24	3:36	2:42	2:10	1:48



CATEGORY	A	B	C	D
S-13	1360-1	524 (600-1)	1360-1½ 524 (600-1½)	NA
CIRCLING	1400-1	564 (600-1)	1400-1½ 564 (600-1½)	NA