

APP CRS	Rwy Idg	3126
236°	TDZE	834
	Apt Elev	836

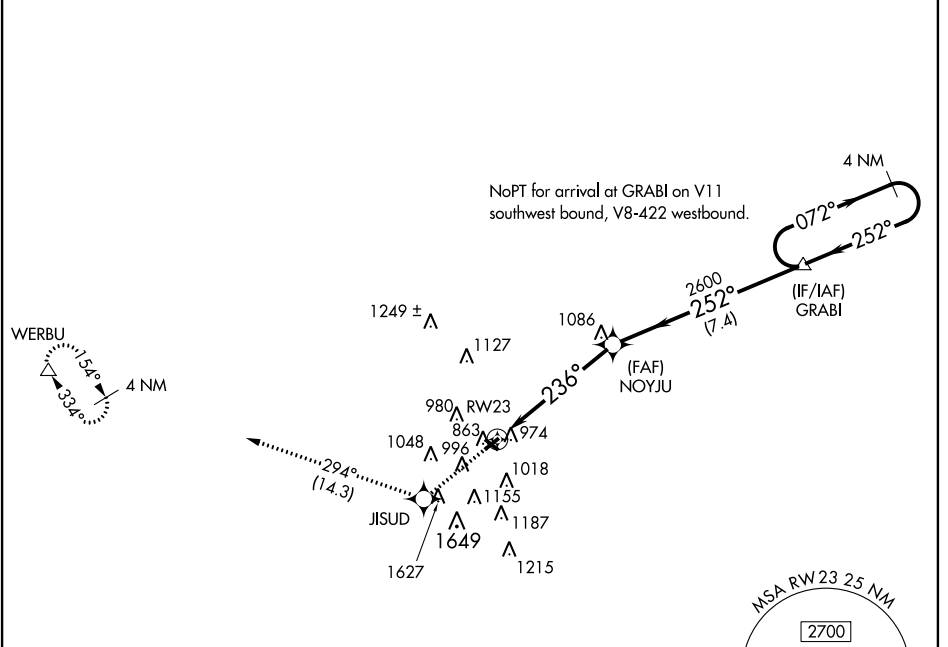
RNAV (GPS) RWY 23

FORT WAYNE/ SMITH FIELD (SMD)

NA DME/DME RNP-0.3 NA. Visibility reduction by helicopters NA.
 When local altimeter setting not received, use Fort Wayne Intl altimeter setting and increase all MDA 40 feet and all Cats B/C visibility 1/4 mile.

MISSED APPROACH: Climb to 2700 direct JISUD and on track 294° to WERBU and hold.

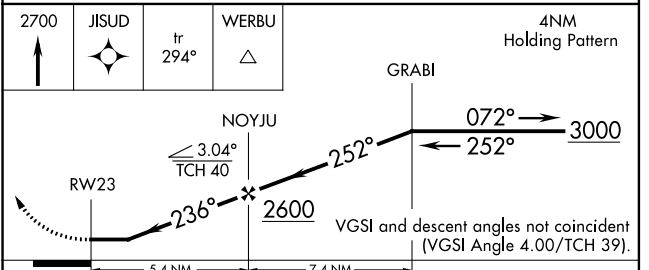
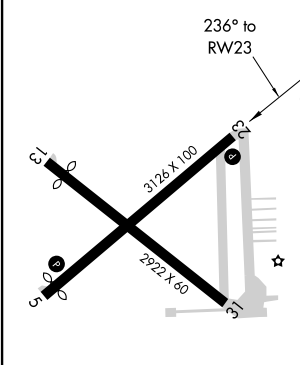
AWOS-3 124.55	FORT WAYNE APP CON 127.2 284.6	UNICOM 122.8 (CTAF) 0
-------------------------	--	---------------------------------



EC-2, 07 FEB 2013 to 07 MAR 2013

EC-2, 07 FEB 2013 to 07 MAR 2013

ELEV	836	TDZE	834
------	------------	------	------------



MIRL Rwy 5-23 and 13-31	0
-------------------------	----------

CATEGORY	A	B	C	D
LNAV MDA	1540-1	706 (800-1)	1540-2 706 (800-2)	NA
CIRCLING	1540-1	704 (800-1)	1540-2 704 (800-2)	NA