

WAAS CH <b>69220</b> <b>W13A</b>	APP CRS <b>133°</b>	Rwy Idg TDZE Apt Elev	<b>2623</b> <b>836</b> <b>836</b>
--	------------------------	-----------------------------	---

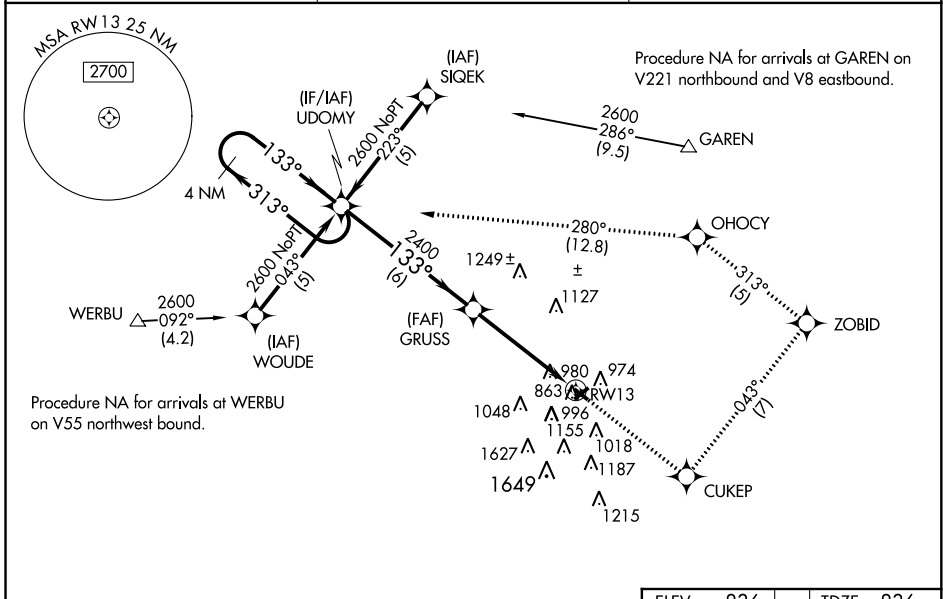
# RNAV (GPS) RWY 13

FORT WAYNE/ SMITH FIELD (SMD)

**NA** For uncompensated Baro-VNAV systems, LNAV/VNAV NA below -16°C (4°F) or above 54°C (130°F). DME/DME RNP-0.3 NA. Visibility reduction by helicopters NA. When local altimeter setting not received, use Fort Wayne Intl altimeter setting and increase all DA 27 feet and LPV all Cats visibility ¼ mile, increase all MDA 40 feet and Circling Cat C visibility ¼ mile. Baro-VNAV NA when using Fort Wayne Intl altimeter setting.

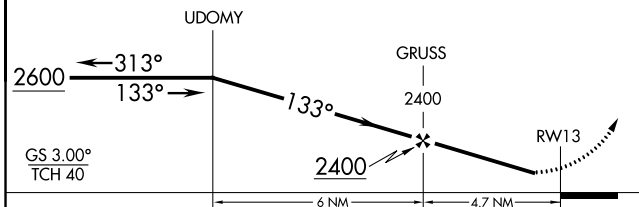
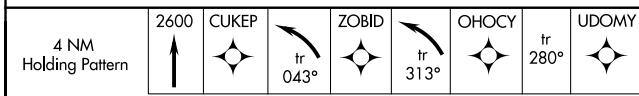
**MISSED APPROACH:** Climb to 2600 direct CUKEP and left turn on track 043° to ZOBID and left turn on track 313° to OHOCY and on track 280° to UDOMY and hold.

AWOS-3 <b>124.55</b>	FORT WAYNE APP CON <b>127.2 284.6</b>	UNICOM <b>122.8 (CTAF) 0</b>
-------------------------	--	---------------------------------

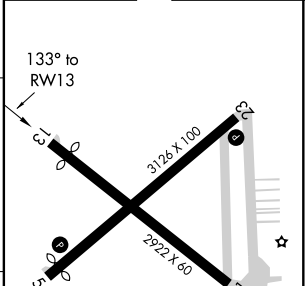


EC-2, 07 FEB 2013 to 07 MAR 2013

EC-2, 07 FEB 2013 to 07 MAR 2013



ELEV 836	TDZE 836
----------	----------



CATEGORY	A	B	C	D
LPV DA	1135-1	299 (300-1)		NA
LNAV/VNAV DA	1408-2	572 (600-2)		NA
LNAV MDA	1340-1	504 (600-1)	1340-1½ 504 (600-1½)	NA
CIRCLING	1400-1	564 (600-1)	1400-1½ 564 (600-1½)	NA

MIRL Rwy 5-23 and 13-31 0