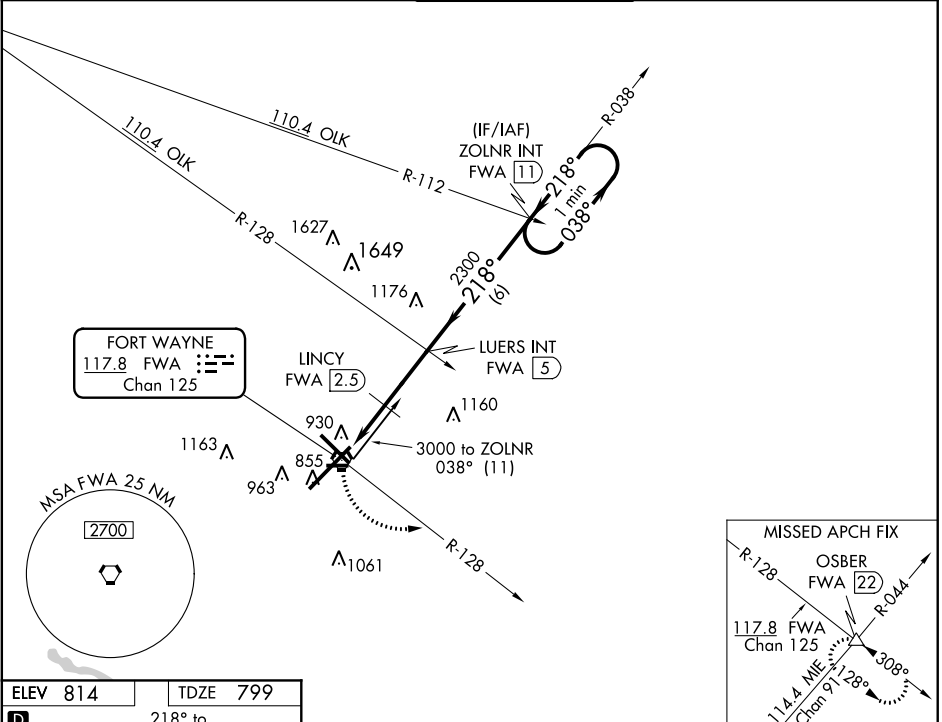


VORTAC FWA <b>117.8</b> Chan 125	APP CRS <b>218°</b>	Rwy Idg TDZE Apt Elev	<b>11981</b> <b>799</b> <b>814</b>
--	------------------------	-----------------------------	--

# VOR or TACAN RWY 23

FORT WAYNE INTL (FWA)

ASR		MISSED APPROACH: Climbing left turn to 3000 via FWA VORTAC R-128 to OSBER INT/FWA 22 DME and hold.		
ATIS <b>121.25 349.0</b>	FORT WAYNE APP CON <b>127.2 284.6</b>	FORT WAYNE TOWER <b>119.1 272.725</b>	GND CON <b>121.9 348.6</b>	CLNC DEL <b>124.75</b>



EC-2, 07 FEB 2013 to 07 MAR 2013

EC-2, 07 FEB 2013 to 07 MAR 2013

ELEV 814	TDZE 799
FAF to MAP 4.5 NM	
Knots	60 90 120 150 180
Min:Sec	4:30 3:00 2:15 1:48 1:30

OSBER FWA R-128 △	LUERS INT FWA 5 LINCY FWA 2.5	ZOLNR INT FWA 11 One Minute Holding Pattern 038° ← 3000 ← 218°		
VGSi and descent angles not coincident (VGSi angle 3.00/TCH 76).				
CATEGORY A B C D E				
S-23	1500/50 701 (700-1)	1500-2 701 (700-2)	1500-2¼ 701 (700-2¼)	1500-2½ 701 (700-2½)
CIRCLING	1500-1 686 (700-1)	1500-2 686 (700-2)	1500-2¼ 686 (700-2¼)	1500-2½ 706 (800-2½)
LINCY FIX MINIMUMS				
S-23	1300/50 501 (500-1)	1300-1½ 501 (500-1½)	1300-1¾ 501 (500-1¾)	
CIRCLING	1320-1 506 (600-1)	1320-1½ 506 (600-1½)	1380-2 566 (600-2)	1520-2½ 706 (800-2½)