

RNAV (GPS) RWY 5

FORT WAYNE INTL (FWA)

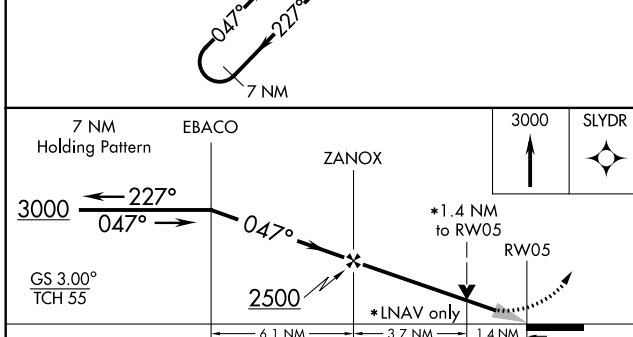
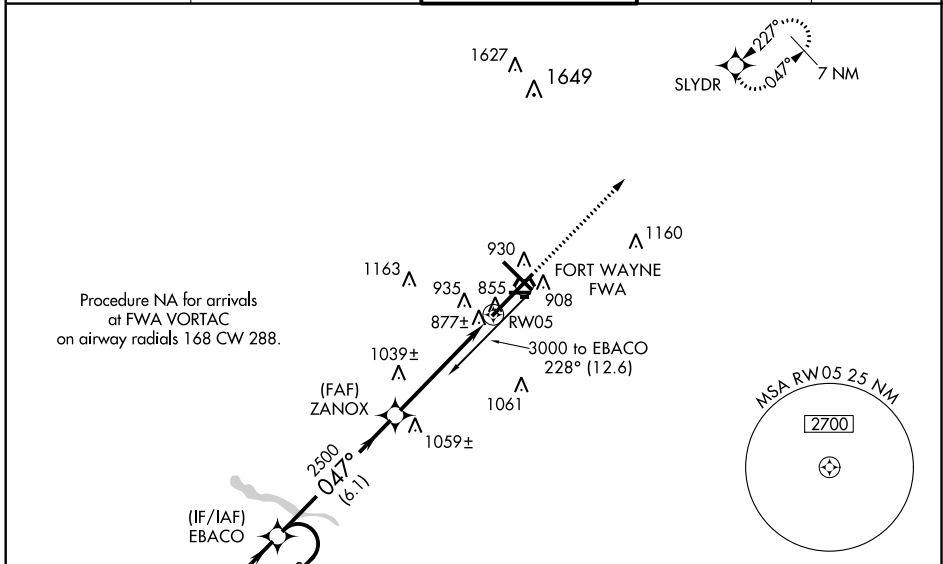
| | | |
|--|------------------------|--|
| WAAS CH 93609 W05A | APP CRS 047° | Rwy Idg 11981 TDZE 815 Apt Elev 815 |
|--|------------------------|--|

⚠ For uncompensated Baro-VNAV systems, procedure NA below -16°C (4°F) or above 47°C (116°F). DME/DME RNP-0.3 NA. VDP and Baro-VNAV NA when using Auburn altimeter setting. When local altimeter setting not received, use Auburn altimeter setting and increase LPV DA to 1122, increase LNAV/VNAV DA to 1332, increase all MDA 60 feet, increase LNAV/VNAV visibility ¼ mile, increase LNAV Cat C/D/E visibility ¼ mile, and increase Circling Cat E visibility ¼ mile. For inoperative ALSF when using Auburn altimeter setting, increase LPV visibility to RVR 5000, increase LNAV/VNAV Cat E visibility to 1 ¼ mile and LNAV Cat E visibility to 2 miles.

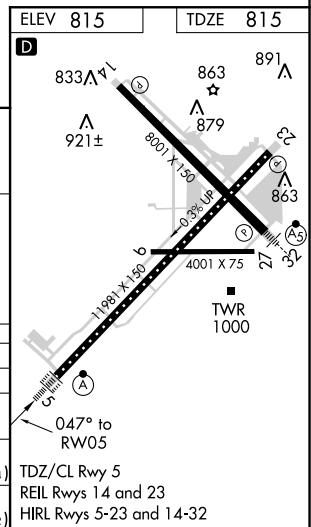
ALSF-2

MISSED APPROACH:
Climb to 3000 direct SLYDR and hold.

| | | | | |
|-----------------------------|--|--|-------------------------------|---------------------------|
| ATIS 121.25 349.0 | FORT WAYNE APP CON 127.2 284.6 | FORT WAYNE TOWER 119.1 272.725 | GND CON 121.9 348.6 | CLNC DEL 124.75 |
|-----------------------------|--|--|-------------------------------|---------------------------|



| CATEGORY | A | B | C | D | E |
|--------------|---------------------|-----------------------|---------------------|-----------------------|----------------------|
| LPV DA | 1065/24 250 (300-½) | | | | |
| LNAV/VNAV DA | 1275/50 460 (500-1) | | | | |
| LNAV MDA | 1300/24 485 (500-½) | 1300/40 485 (500-¾) | 1300/50 485 (500-1) | 1300/60 485 (500-1½) | 1500/20 485 (500-1½) |
| CIRCLING | 1300-1 485 (500-1) | 1300-1 ½ 485 (500-1½) | 1380-2 565 (600-2) | 1520-2 ½ 705 (800-2½) | |



EC-2, 07 FEB 2013 to 07 MAR 2013

EC-2, 07 FEB 2013 to 07 MAR 2013