

# RNAV (GPS) RWY 23

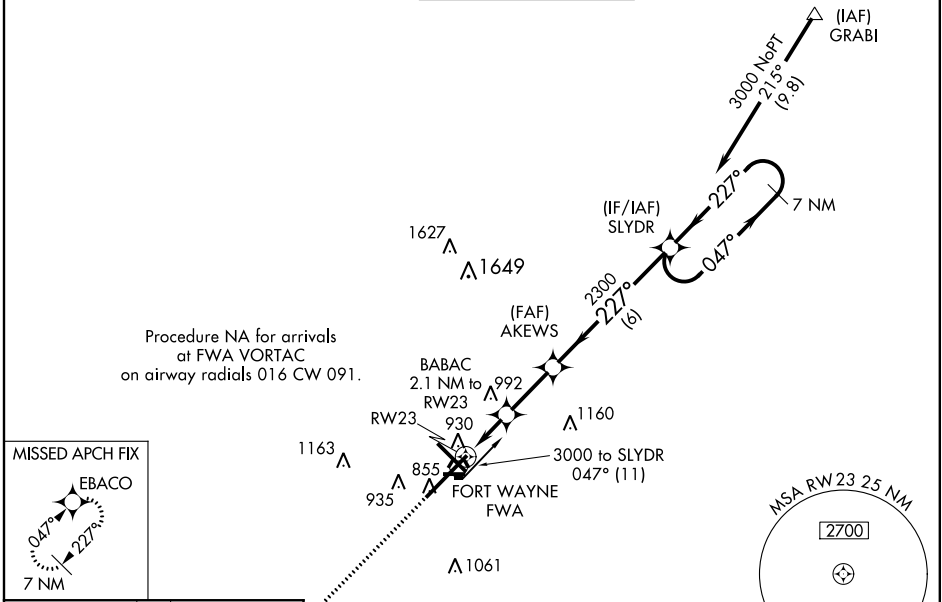
FORT WAYNE INTL (FWA)

WAAS CH <b>69599</b> <b>W23A</b>	APP CRS <b>227°</b>	Rwy Idg <b>11981</b> TDZE <b>799</b> Apt Elev <b>815</b>
--	------------------------	--

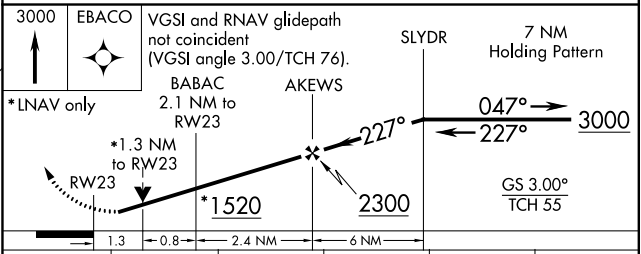
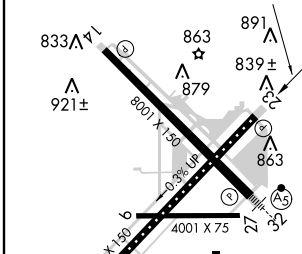
**▼** For uncompensated Baro-VNAV systems, LNAV/VNAV NA below -16°C (4°F) or above 47°C (116°F).  
**▲** DME/DME RNP-0.3 NA. Visibility reduction by helicopters NA. VDP and Baro-VNAV NA when using Auburn altimeter setting. When local altimeter setting not received, use Auburn altimeter setting and increase LPV DA to 1110, increase LNAV/VNAV DA to 1287, increase all MDA 60 feet and increase LPV visibility ¼ mile, LNAV/VNAV visibility ¼ mile, LNAV Cat D/E visibility ¼ mile, and Circling Cat E visibility ¼ mile.

**ASR** MISSED APPROACH: Climb to 3000 direct EBACO and hold.

ATIS <b>121.25 349.0</b>	FORT WAYNE APP CON <b>127.2 284.6</b>	FORT WAYNE TOWER <b>119.1 272.725</b>	GND CON <b>121.9 348.6</b>	CLNC DEL <b>124.75</b>
-----------------------------	--	--	-------------------------------	---------------------------



ELEV <b>815</b>	TDZE <b>799</b>
-----------------	-----------------



CATEGORY	A	B	C	D	E
LPV DA	1053/40		254 (300-¾)		
LNAV/VNAV DA	1230-1½		431 (500-1½)		
LNAV MDA	1300/50	501 (500-1)	1300-1½	501 (500-1½)	1300-1¾ 501 (500-1¾)
CIRCLING	1300-1	485 (500-1)	1300-1½ 485 (500-1½)	1380-2 565 (600-2)	1520-2½ 705 (800-2½)

EC-2, 07 FEB 2013 to 07 MAR 2013

EC-2, 07 FEB 2013 to 07 MAR 2013