

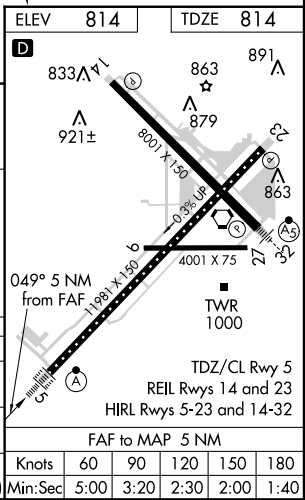
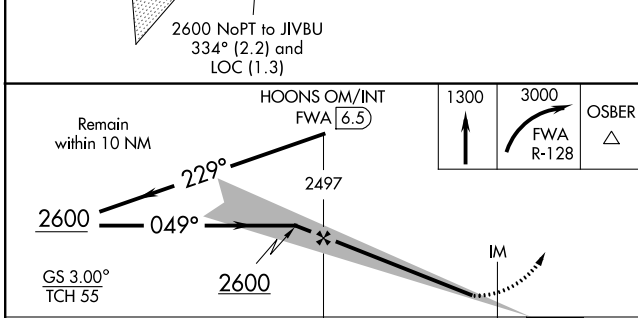
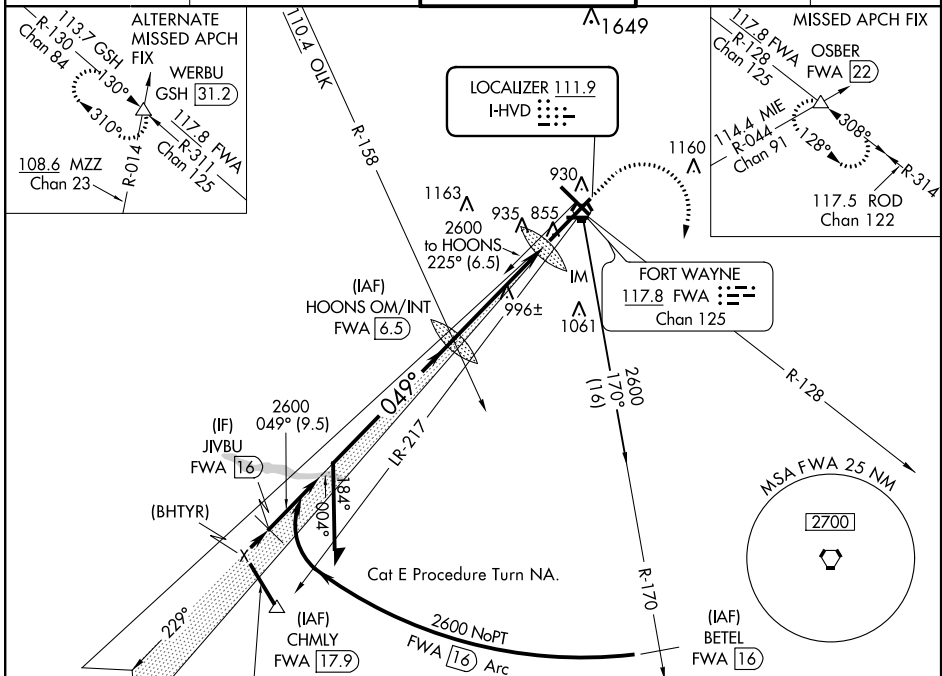
LOC I-HVD 111.9	APP CRS 049°	Rwy Idg TDZE Apt Elev	11981 814 814
---------------------------	------------------------	-----------------------------	--

ILS or LOC RWY 5

FORT WAYNE INTL (FWA)

<p>▼ For inoperative ALSF-2, increase S-ILS 5 Cat E visibility to RVR 4000 and increase S-LOC 5 Cat E visibility to 1½ mile.</p> <p>▲ ASR</p>	<p>ALSF-2</p>	<p>MISSED APPROACH: Climb to 1300 then climbing right turn to 3000 via FWA R-128 to OSBER INT/FWA 22 DME and hold.</p>
---	---------------	--

<p>ATIS 121.25 349.0</p>	<p>FORT WAYNE APP CON 127.2 284.6</p>	<p>FORT WAYNE TOWER 119.1 272.725</p>	<p>GND CON 121.9 348.6</p>	<p>CLNC DEL 124.75</p>
-------------------------------------	--	--	---------------------------------------	-----------------------------------



CATEGORY	A	B	C	D	E
S-ILS 5	1014/18 200 (200-½)				1014/24 200 (200-½)
S-LOC 5	1260/24 446 (500-½)	1260/40 446 (500-¾)	1260/50 446 (500-1)		
CIRCLING	1320-1 506 (600-1)	1320-1½ 506 (600-1½)	1380-2 566 (600-2)	1520-2½ 706 (800-2½)	

EC-2, 07 FEB 2013 to 07 MAR 2013

EC-2, 07 FEB 2013 to 07 MAR 2013