

# RNAV (GPS) RWY 4

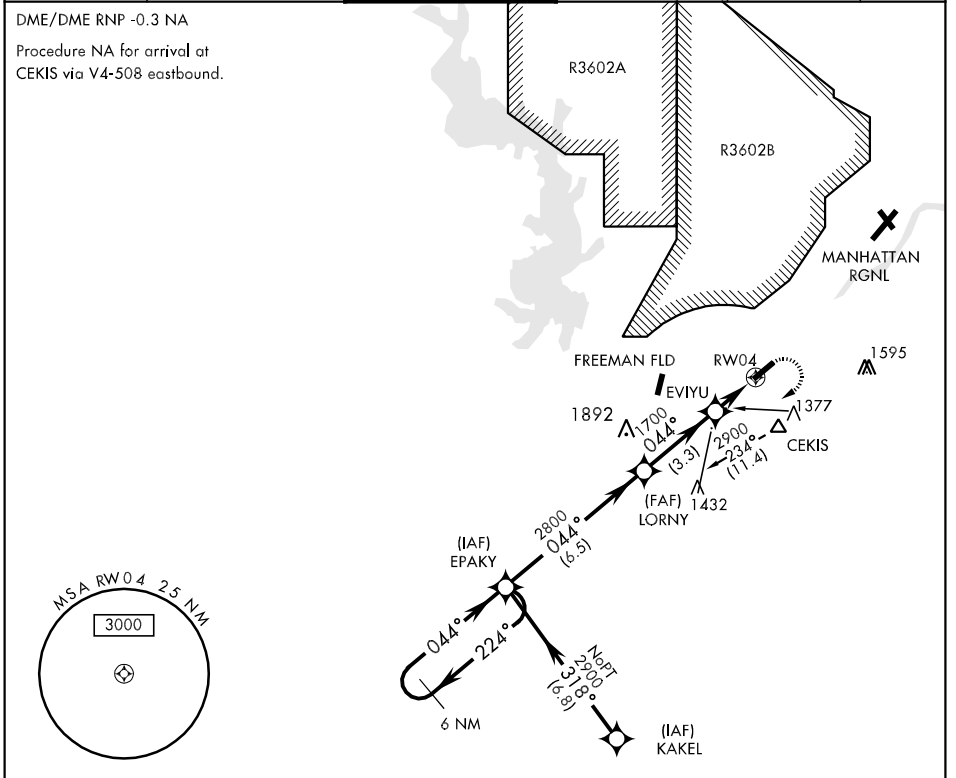
APCH CRS	Rwy Idg	4503
044°	TDZE	1066
	Arpt Elev	1066

AL-155 [USA]

MARSHALL AAF (KFRI)

<b>▼</b> * Circling not authorized NW of Rwy 4-22.	<b>ODALS</b> 	MISSED APPROACH: Climbing right turn to 2900 direct EPAKY and hold.
<b>▲</b> NA Visibility reduction by helicopters NA		

<b>ATIS *</b> 121.025	<b>MARSHALL GCA</b> 121.25 254.35	<b>MARSHALL TOWER *</b> 126.2 (CTAF) 248.65	<b>GND CON</b> 140.20 229.4	<b>CLNC DEL</b> 119.65	ASR/PAR
--------------------------	--------------------------------------	------------------------------------------------	--------------------------------	---------------------------	---------



NC-2, 07 FEB 2013 to 07 MAR 2013

NC-2, 07 FEB 2013 to 07 MAR 2013

EPAKY		ELEV 1066		TDZE 1066	
CATEGORY	A	B	C	D	
RNAV MDA	1640-1 574 (600-1)	1640-1 574 (600-1)	1640-1½ 574 (600-1½)	1640-1¾ 574 (600-1¾)	
CIRCLING *	1660-1 594 (600-1)	1680-1 614 (700-1)	1680-1¾ 614 (700-1¾)	1760-2¼ 694 (700-2¼)	

044° from LORNY  
HIRL Rwy 4-22

# RNAV (GPS) RWY 4