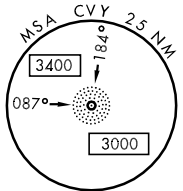
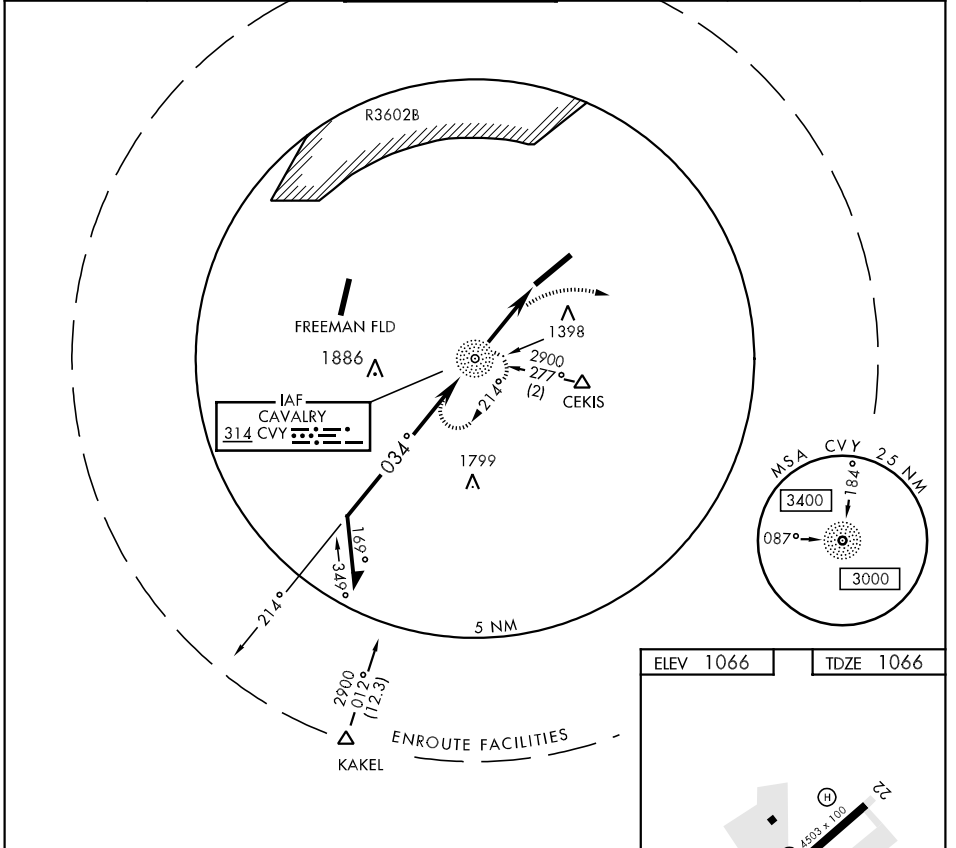


COPTER NDB RWY 4

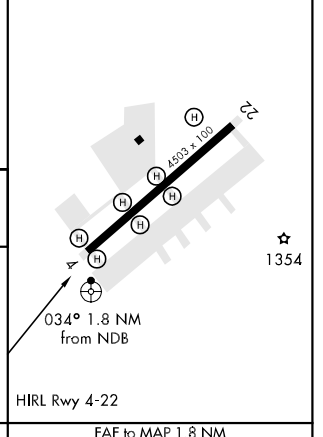
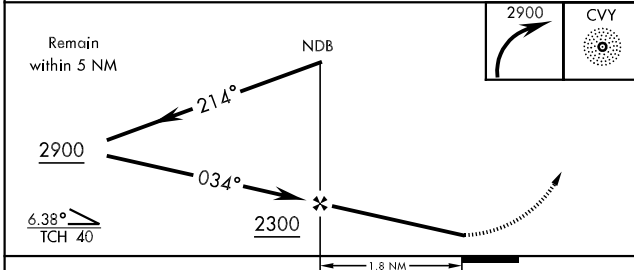
NDB CVY 314	APCH CRS 034°	Rwy Idg TDZE Arpt Elev 4503 1066 1066	AL-155 [USA]	MARSHALL AAF (KFRI)
-----------------------	-------------------------	---	--------------	---------------------

	ODALS	MISSED APPROACH: Climbing right turn to 2900 direct CVY NDB and hold.
	Visibility reduction by helicopters NA	

ATIS ★ 121.025	MARSHALL GCA 121.25 254.35	MARSHALL TOWER ★ 126.2 (CTAF) 248.65	GND CON 140.20 229.4	CLNC DEL 119.65	ASR/PAR
--------------------------	--------------------------------------	--	--------------------------------	---------------------------	---------



ELEV 1066	TDZE 1066
-----------	-----------



CATEGORY	COPTER			FAF to MAP 1.8 NM					
H-4	1640-1	574	(600-1)	Knots	45	60	75	90	105
				Min:Sec	2:24	1:48	1:26	1:12	1:02

COPTER NDB RWY 4

NC-2, 07 FEB 2013 to 07 MAR 2013

NC-2, 07 FEB 2013 to 07 MAR 2013