

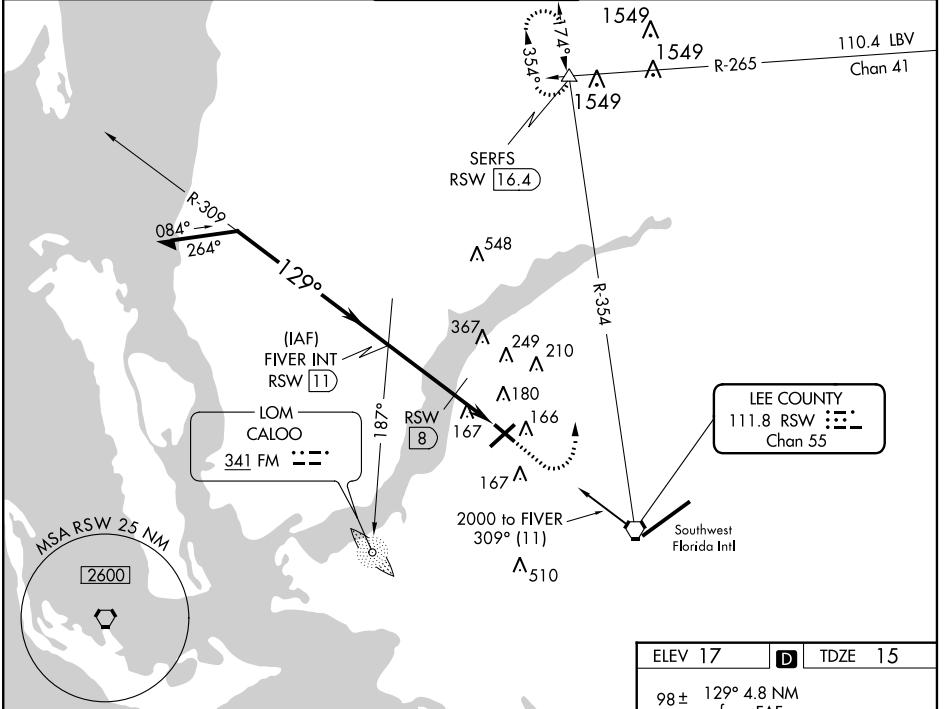
VORTAC RSW <b>111.8</b> Chan <b>55</b>	APP CRS <b>129°</b>	Rwy Idg TDZE <b>15</b> Apt Elev <b>17</b>	<b>4297</b>
--	------------------------	---	-------------

# VOR RWY 13

FORT MYERS / PAGE FIELD (FMY)

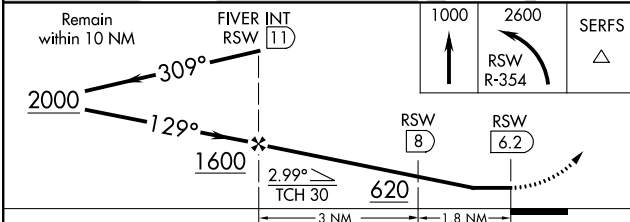
ADF or DME REQUIRED		MISSED APPROACH: Climb to 1000 then climbing left turn to 2600 on RSW R-354 to SERFS INT/RSW 16.4 DME and hold.		
---------------------	--	---	--	--

ATIS <b>123.725</b>	FORT MYERS APP CON* <b>126.8 343.75</b>	PAGE TOWER* <b>119.0 (CTAF) 306.95</b>	GND CON <b>121.7</b>	CLNC DEL <b>121.7</b>
------------------------	--	---	-------------------------	--------------------------



SE-3, 07 FEB 2013 to 07 MAR 2013

SE-3, 07 FEB 2013 to 07 MAR 2013



ELEV 17	D	TDZE 15
98±	129° 4.8 NM from FAF	168
100±	TWR 100	86±
130±	6406 X 150	4912 X 150
131±		74±
93		
MIRL Rws 5-23 and 13-31		
FAF to MAP 4.8 NM		
Knots	60	90 120 150 180
Min:Sec	4:48	3:12 2:24 1:55 1:36

CATEGORY	A	B	C	D
S-13	620-1	605 (700-1)	620-1¾ 605 (700-1¾)	620-2 605 (700-2)
CIRCLING	620-1	603 (700-1)	620-1¾ 603 (700-1¾)	620-2 603 (700-2)
DME MINIMUMS				
S-13	480-1	465 (500-1)	480-1¼ 465 (500-1¼)	480-1½ 465 (500-1½)
CIRCLING	540-1	523 (600-1)	540-1½ 523 (600-1½)	600-2 583 (600-2)