

(TYNEE.TYNEE1) 11013

TYNEE ONE ARRIVAL (RNAV) ST-154 (FAA)

FORT MYERS, FLORIDA

FORT MYERS APP CON *
125.15 306.2
PAGE FIELD ATIS
123.725
SOUTHWEST FLORIDA ATIS *
124.65

BAGGS TRANSITION (BAGGS.TYNEE1):
CODGR TRANSITION (CODGR.TYNEE1):
FRZBE TRANSITION (FRZBE.TYNEE1):
SEMINOLE TRANSITION (SZW.TYNEE1):

From over TYNEE via 149° track to PASTR, thence...

Landing RSW Rwy 6: From over PASTR via 107° track to LENPE, then via 107° heading. Expect radar vectors.

Landing RSW Rwy 24: From over PASTR via 129° track to LLMER, then via 086° track to SPNKE, then via 058° track to COOPR, then via 058° heading. Expect radar vectors.

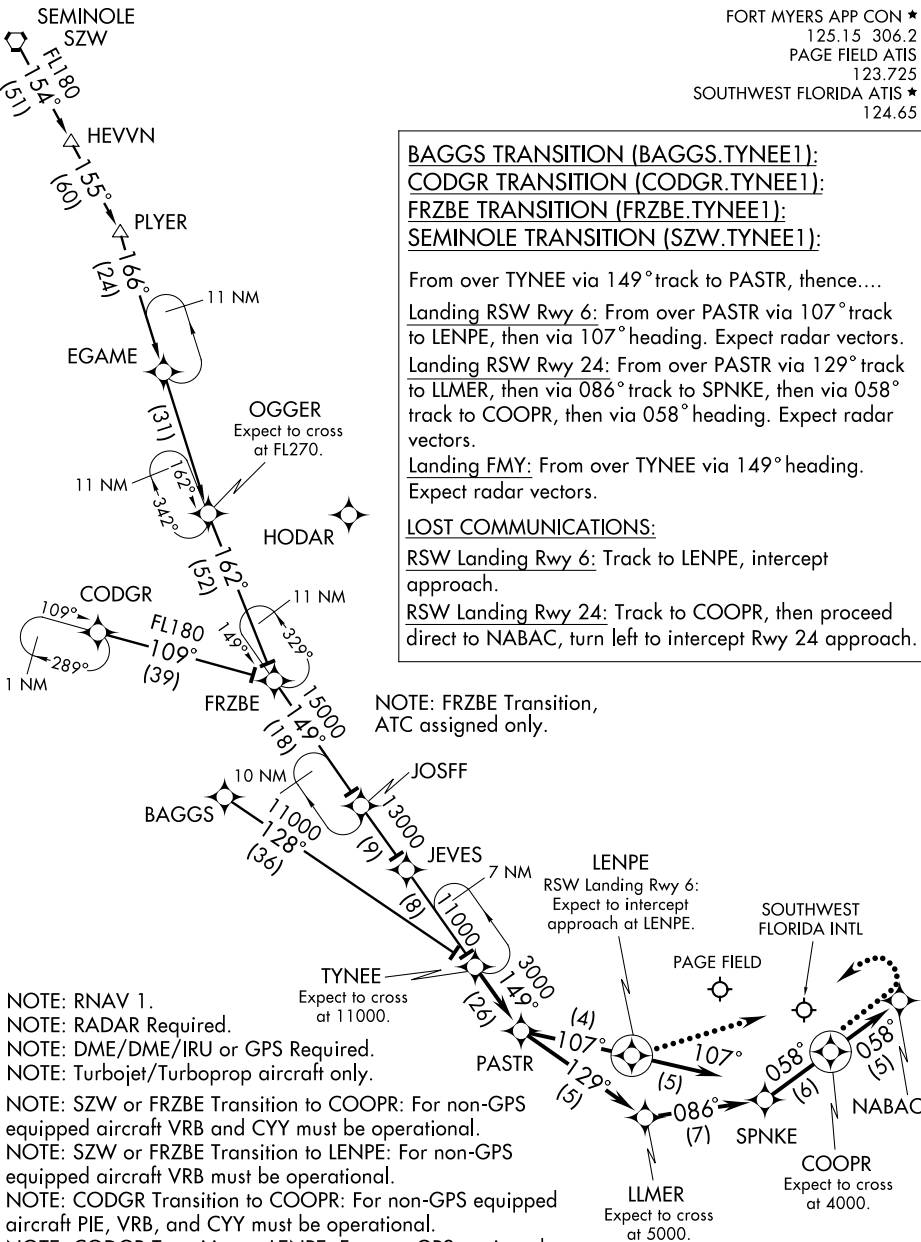
Landing FMY: From over TYNEE via 149° heading. Expect radar vectors.

LOST COMMUNICATIONS:

RSW Landing Rwy 6: Track to LENPE, intercept approach.

RSW Landing Rwy 24: Track to COOPR, then proceed direct to NABAC, turn left to intercept Rwy 24 approach.

NOTE: FRZBE Transition, ATC assigned only.



NOTE: RNAV 1.
NOTE: RADAR Required.
NOTE: DME/DME/IRU or GPS Required.
NOTE: Turbojet/Turboprop aircraft only.

NOTE: SZW or FRZBE Transition to COOPR: For non-GPS equipped aircraft VRB and CYY must be operational.
NOTE: SZW or FRZBE Transition to LENPE: For non-GPS equipped aircraft VRB must be operational.
NOTE: CODGR Transition to COOPR: For non-GPS equipped aircraft PIE, VRB, and CYY must be operational.
NOTE: CODGR Transition to LENPE: For non-GPS equipped aircraft PIE and VRB must be operational.
NOTE: BAGGS Transition to COOPR: For non-GPS equipped aircraft CYY and RSW must be operational.

NOTE: Chart not to scale.

TYNEE ONE ARRIVAL (RNAV)

(TYNEE.TYNEE1) 11013

FORT MYERS, FLORIDA

SE-3, 07 FEB 2013 to 07 MAR 2013

SE-3, 07 FEB 2013 to 07 MAR 2013