

WAAS CH <b>50524</b> <b>W31A</b>	APP CRS <b>314°</b>	Rwy Idg THRE <b>15</b> Apt Elev <b>17</b>	<b>4667</b>
--	------------------------	---	-------------

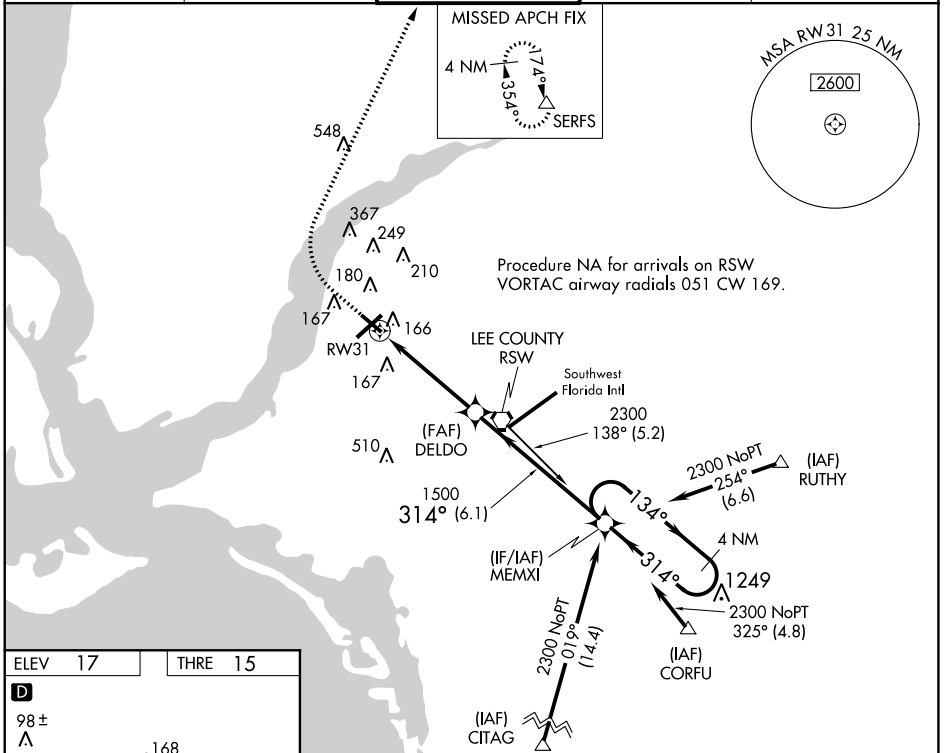
# RNAV (GPS) RWY 31

FORT MYERS / PAGE FIELD (FMY)

▼ For uncompensated Baro-VNAV systems, LNAV/VNAV NA below -15°C (5°F) or above -54°C (130°F). DME/DME RNP-0.3 NA. Visibility reduction by helicopters NA.

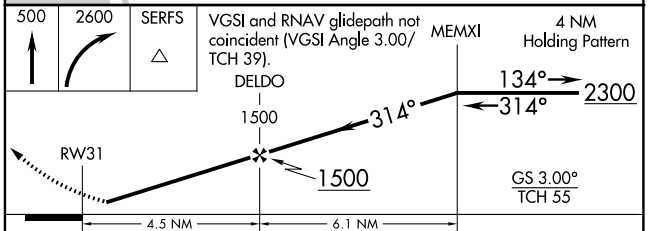
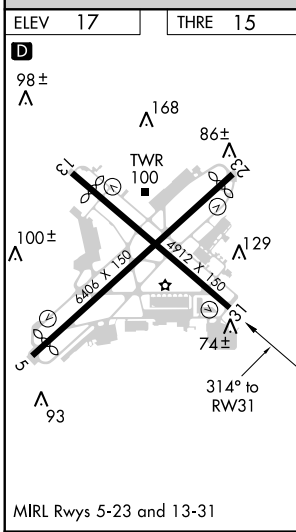
MISSED APPROACH: Climb to 500 then climbing right turn to 2600 direct SERFS and hold.

ATIS <b>123.725</b>	FORT MYERS APP CON* <b>126.8 343.75</b>	PAGE TOWER* <b>119.0 (CTAF) 306.95</b>	GND CON <b>121.7</b>	CLNC DEL <b>121.7</b>
------------------------	--	---	-------------------------	--------------------------



SE-3, 07 FEB 2013 to 07 MAR 2013

SE-3, 07 FEB 2013 to 07 MAR 2013



CATEGORY	A	B	C	D
LPV DA	265-1 250 (300-1)			NA
LNAV/VNAV DA	366-1½ 351 (400-1½)			NA
LNAV MDA	480-1	465 (500-1)	480-1½ 465 (500-1½)	NA
CIRCLING	540-1	523 (600-1)	540-1½ 523 (600-1½)	NA