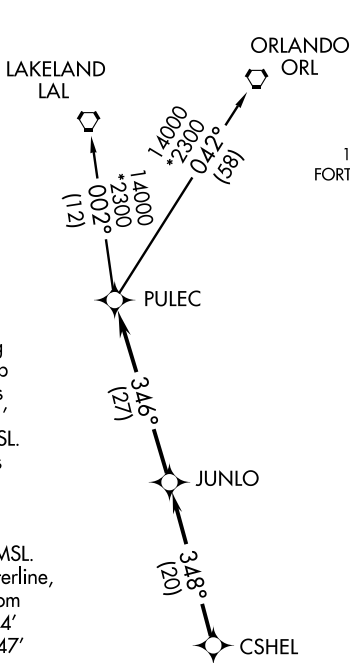


CSHEL FOUR DEPARTURE (RNAV)

- NOTE: RADAR required.
- NOTE: DME/DME/IRU or GPS Required.
- NOTE: RNAV 1.
- NOTE: For Turbojet aircraft only.
- NOTE: For non-GPS equipped aircraft
LAL, LBV, RSW, and SRQ DME's
must be operational.



ATIS 123.725
 CLNC DEL 121.7
 GND CON 121.7
 PAGE TOWER★ 119.0 (CTAF) 306.95
 FORT MYERS DEP CON★ 126.8 343.75

TAKEOFF OBSTACLES:

- Rwy 5: Bush, train and multiple trees beginning 81' from DER, 52' right of centerline, up to 73' AGL/90' MSL. Multiple antennas and trees beginning 330' from DER, 81' left of centerline, up to 70' AGL/86' MSL.
- Rwy 13: Bush, road, buildings and multiple trees beginning 66' from DER, 138' right of centerline, up to 52 AGL/66' MSL. Rod on light pole 306' from DER, 375' right of centerline, up to 22' AGL/37' MSL. Trees 644' from DER, 375' right of centerline, up to 72' AGL/87' MSL. Fence 241' from DER, 138' left of centerline, 10' AGL/24' MSL. OL on building 829' from DER, 447' left of centerline, 34' AGL/48' MSL.
- Rwy 23: Sign, concrete pole, OL on pole, tree and antenna beginning 98' from DER, 95' right of centerline, up 36' AGL/49' MSL. Vehicles, concrete pole, OL on pole and trees beginning 288' from DER, 8' left of centerline, up to 62' AGL/75' MSL.
- Rwy 31: Concrete pole, power poles, light poles, floodlights, vehicles, trees, antenna towers and bridge beginning 5' from DER, 285' right of centerline, up to 113' AGL/126' MSL. Power poles, concrete pole and trees beginning 67' from DER, 235' left of centerline, up to 74' AGL/88' MSL.



TAKEOFF MINIMUMS

Rwy 5, 13, 23, 31: Standard.

NOTE: Chart not to scale.



DEPARTURE ROUTE DESCRIPTION

TAKEOFF ALL RUNWAYS: Climb on assigned heading for radar vectors to CSHEL, then via depicted route to PULEC, thence

. . . . via (transition). Maintain 1500, or as assigned by ATC, expect filed altitude/flight level 10 minutes after departure.

LAKELAND TRANSITION (CSHEL4.LAL):

ORLANDO TRANSITION (CSHEL4.ORL):