

KANSAS CITY DEP CON
124.7 318.1

ST JOSEPH
115.5 STJ
Chan 102

SALINA
117.1 SLN
Chan 118
N38°55.51' W97°37.28'
L-10, H-5

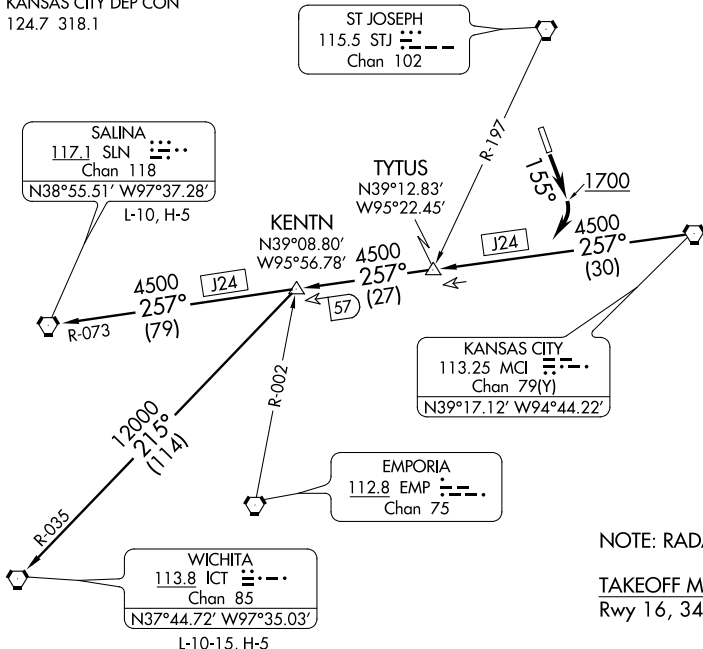
KENTN
N39°08.80'
W95°56.78'

TYTUS
N39°12.83'
W95°22.45'

KANSAS CITY
113.25 MCI
Chan 79(Y)
N39°17.12' W94°44.22'

EMPORIA
112.8 EMP
Chan 75

WICHITA
113.8 ICT
Chan 85
N37°44.72' W97°35.03'
L-10-15, H-5



NOTE: RADAR required.

TAKEOFF MINIMUMS:
Rwy 16, 34: Standard

TAKEOFF OBSTACLES:

- Rwy 16: Road 79' from DER, across departure course, up to 15' AGL/779' MSL.
Building 400' from DER, 580' left of centerline, 28' AGL/788' MSL.
Pumphouse 444' from DER, 564' left of centerline, 23' AGL/783' MSL.
Boats 1063' from DER, across departure course, up to 45' AGL/800' MSL.
Trees 2165' from DER, across departure course, up to 75' AGL/838' MSL.
- Rwy 34: Multiple trees and poles beginning 117' from DER on centerline, up to 100' AGL/879' MSL.
Levee 187' from DER on centerline, 35' AGL/782'.

NOTE: Chart not to scale

DEPARTURE ROUTE DESCRIPTION

TAKEOFF RWY 16: Climb heading 155° to 1700, before turning southwest, thence. . . . Fly assigned heading and altitude for vector to appropriate route. Expect filed altitude 10 minutes after departure.

TAKEOFF ALL RWYS: Fly assigned heading and altitude for vector to appropriate route. Expect filed altitude 10 minutes after departure.

KENTN TRANSITION (WLDCT3.KENTN): From over MCI VORTAC on MCI R-257 to KENTN INT.

SALINA TRANSITION (WLDCT3.SLN): From over MCI VORTAC on MCI R-257 and SLN R-073 to SLN VORTAC.

WICHITA TRANSITION (WLDCT3.ICT): From over MCI VORTAC on MCI R-257 to KENTN INT, then on ICT R-035 to ICT VORTAC.